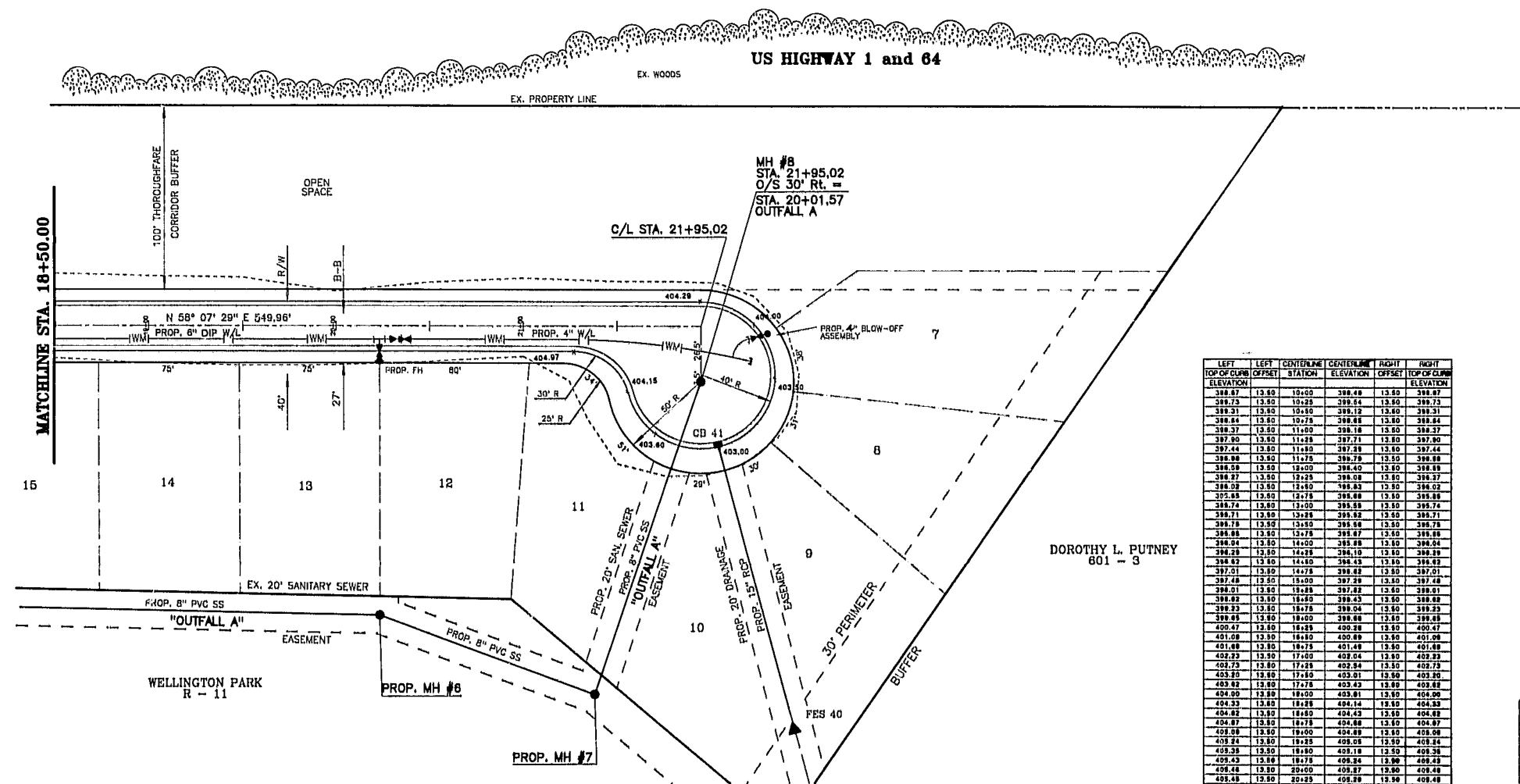
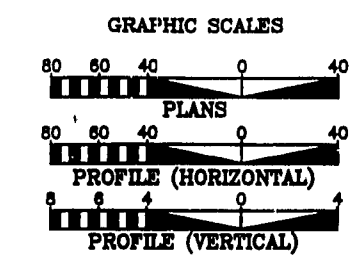


Revisions
07/19/94 REVISIONS AS PER TOWN OF CARY
08/01/94 REVISIONS AS PER TOWN OF CARY
SEPT. 7, 1994 REVISIONS TO ALLOW FOR PHASED CONSTRUCTION

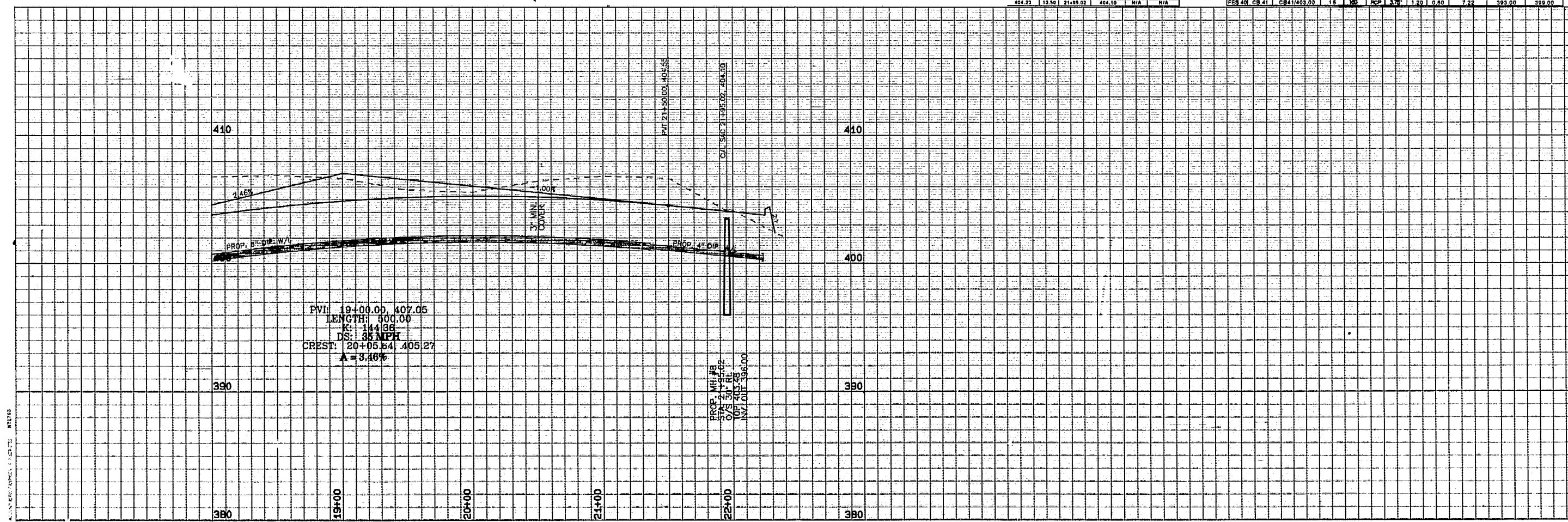
FINAL APPROVED PLANS



LEFT TOP OF CURB ELEVATION	LEFT OFFSET	CENTERLINE STATION	CENTERLINE ELEVATION	RIGHT OFFSET	RIGHT TOP OF CURB ELEVATION
388.87	13.80	19+00	398.48	13.80	398.87
389.73	13.80	19+25	398.54	13.80	399.73
389.21	13.80	19+50	398.12	13.80	388.31
388.84	13.80	19+75	398.88	13.80	388.84
389.37	13.80	20+00	398.18	13.80	389.37
387.90	13.80	20+25	397.71	13.80	387.90
387.44	13.80	20+50	397.38	13.80	387.44
386.88	13.80	20+75	396.79	13.80	386.88
386.08	13.80	21+00	396.40	13.80	386.08
386.87	13.80	21+25	396.08	13.80	386.87
386.29	13.80	21+50	395.83	13.80	386.29
375.85	13.80	21+75	395.88	13.80	385.88
385.74	13.80	22+00	395.58	13.80	385.74
385.71	13.80	22+25	395.58	13.80	385.71
385.73	13.80	22+50	395.58	13.80	385.73
385.88	13.80	22+75	395.87	13.80	385.88
386.04	13.80	23+00	396.08	13.80	386.04
386.28	13.80	23+25	396.10	13.80	386.28
386.82	13.80	23+50	396.43	13.80	386.82
387.01	13.80	23+75	396.87	13.80	387.01
387.48	13.80	24+00	397.28	13.80	387.48
388.01	13.80	24+25	397.87	13.80	388.01
388.82	13.80	24+50	398.43	13.80	388.82
389.33	13.80	24+75	399.04	13.80	389.33
389.85	13.80	25+00	399.88	13.80	389.85
400.41	13.80	25+25	400.88	13.80	400.41
401.09	13.80	25+50	400.89	13.80	401.09
401.88	13.80	25+75	401.88	13.80	401.88
402.32	13.80	26+00	402.24	13.80	402.32
402.73	13.80	26+25	402.84	13.80	402.73
403.25	13.80	26+50	403.81	13.80	403.25
403.82	13.80	26+75	403.43	13.80	403.82
404.00	13.80	27+00	403.81	13.80	404.00
404.53	13.80	27+25	404.14	13.80	404.53
404.82	13.80	27+50	404.43	13.80	404.82
404.87	13.80	27+75	404.88	13.80	404.87
405.08	13.80	28+00	404.88	13.80	405.08
405.28	13.80	28+25	405.18	13.80	405.28
405.43	13.80	28+50	405.84	13.80	405.43
406.48	13.80	28+75	406.87	13.80	406.48
405.48	13.80	29+00	406.28	13.80	405.48
405.38	13.80	29+25	406.89	13.80	405.38
405.30	13.80	29+50	406.11	13.80	405.30
405.18	13.80	29+75	404.99	13.80	405.18
404.87	13.80	30+00	404.79	13.80	404.87
404.74	13.80	30+25	404.55	N/A	N/A
404.49	13.80	30+50	404.20	N/A	N/A
404.23	13.80	30+75	404.10	N/A	N/A



FROM	TO	TYPE/ELEV	DIA (in)	LTN (ft)	PIPE TYPE	%	AREA (sq)	C	I (IN/HR)	INVERT	DOWNSTREAM	UPSTREAM
FEB 10	FEB 11	FEB 11/1	18	54	PEP	2.00	1.10	0.40	7.22	388.50	388.24	
FEB 20	CB 21	CB21/385.72	18	54	PEP	4.00	0.10	1.00	7.22	388.50	388.24	
CB 21	CB 22	CB22/385.80	18	54	PEP	1.00	0.28	1.00	7.22	388.54	388.63	
CB 22	CB 23	CB23/385.80	18	27	PEP	1.00	0.80	0.47	7.22	388.83	387.10	
CB 23	CB 24	CB24/385.72	18	54	PEP	1.00	1.11	0.48	7.22	387.30	387.40	
FEB 30	CB 31	CB31/401.02	30	108	PEP	6.00	0.60	0.47	7.22	388.50	391.92	
CB 31	FEB 32	FEB32/289.00	30	108	PEP	5.23	4.70	0.70	8.19	384.12	395.00	
FEB 40	CB 41	CB41/403.00	18	54	PEP	3.75	1.20	0.60	7.22	393.00	398.00	



OWNER:
GOODWILL CORPORATION
104 ED BENDORS COURT
CARY, N. C. 27811

Project
BENEDUM PLACE
STATION 18+50 TO
STATION 22+00

Date
JUNE 29, 1994

Scale
HORIZ: 1" = 40'
VERT: 1" = 4'

Sheet
4 OF 8