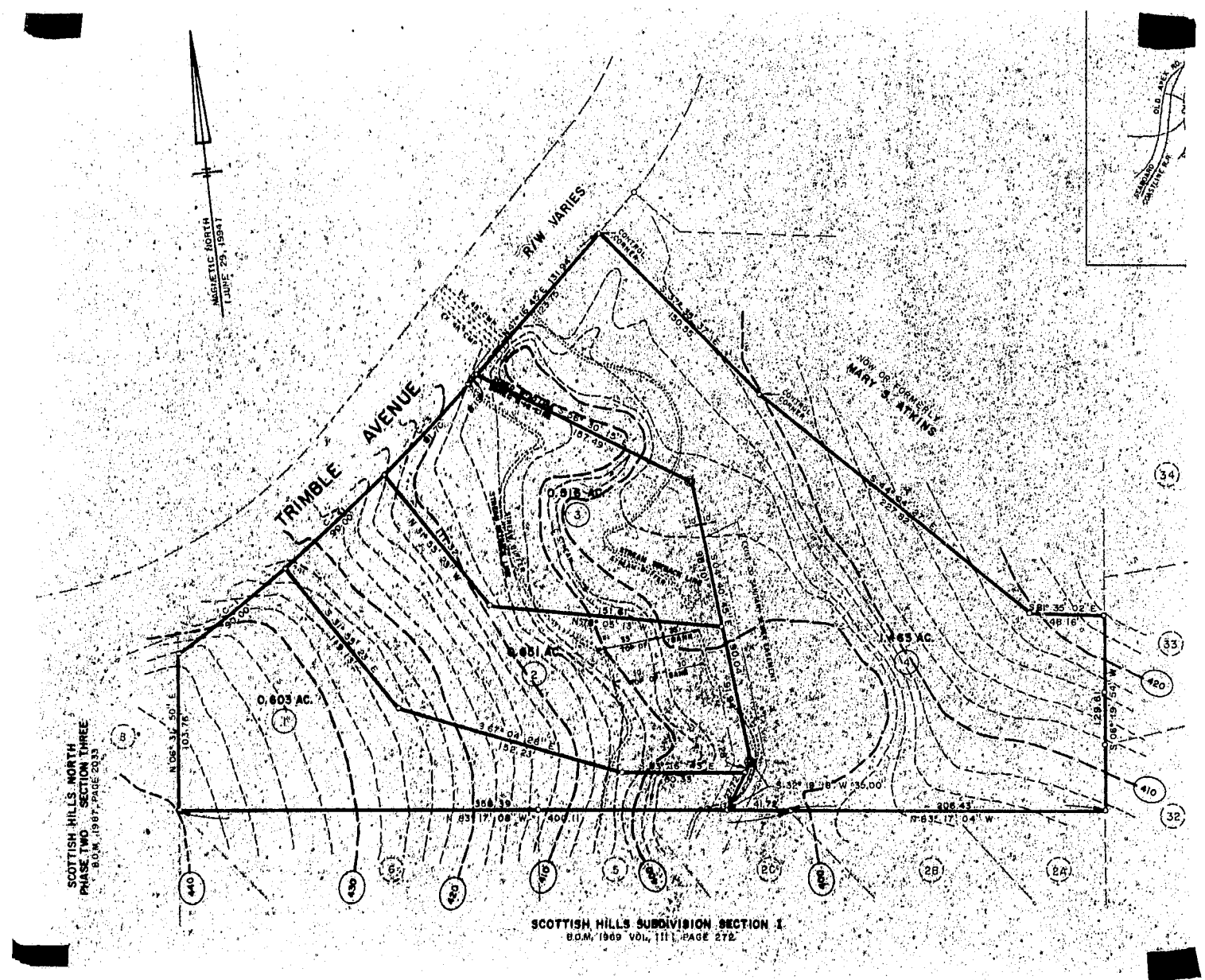


"BENT CREEK"



SCOTTISH HILLS NORTH
PHASE TWO SECTION THREE
B.O.M. 1987 PAGE 2033

SCOTTISH HILLS SUBDIVISION SECTION I
B.O.M. 1969 VOL. III, PAGE 272

MAP IS DERIVED FROM THE TOWN OF PARY DATA.

