

VICINITY MAP
1" = 500'

LANDSCAPE CALCULATIONS

VEHICULAR USE AREA	16,026 S.F.
TOTAL LANDSCAPED AREA	38,346 S.F.
IMPERVIOUS AREA	27,647

LOT 10 KITTY HAWK
ZONE N.B.
VACANT

PLANT LIST

KEY	BOTANICAL NAME	COMMON NAME	SIZE	ROOT	QUAN.	REMARKS
NH	ACER RUBRUM	RED MAPLE	2" CAL.	B&B	2	8" H.H.T.
RB	STYRAX NIGRA	HYDRANGEA	"	"	2	MULTI-STEM 8" H.H.T.
YB	QUERCUS PAUCIFLORA	WHITE OAK	"	"	12	8" H.H.T. 25' SPACING
LC	WUPRESODENDRUM LEUCOPHYLLUM	LELAND CYPRESS	18" H.T.	CONT.	32	7' SPACING
WH	HEDERA HELIX	IVY	"	"	40	5' SPACING
P	PLANTAGO PRASENS	FRASER'S PANTHERA	"	"	37	5' SPACING
NH	NOY NELLE E. GONCALVES	NOBLE E. STIGMANS PLANT	4"-5" H.T.	"	2	"
J	JUNIPERUS CONFERTA 'DAVE PRINCE'	SWEEPING JUNIPER	1 GAL.	"	28	3' SPACING
D	FRAXINUS LANCEOLATA 'MID WINTER'	GREEN FRAXINUS	3 GAL.	"	28	3' SPACING
YH	LOPACHODIA LEUCOMERIS	YONKERS GRASS	3 GAL.	"	3	3' SPACING

GENERAL NOTES

- All trees have been located with respect to proposed or existing conditions.
- Verification of total quantities as shown in the Plant List shall be the responsibility of the landscape contractor, and the total quantity shall be as required on the Planting Plan.
- All trees, shrubs and plants shall conform to accepted standards established by the American Association of Nurserymen.
- All containers shall be soaked with water and mulched immediately following planting.
- Pruning - thin branches and foliage of deciduous trees (not all end tips) by 1/3, retaining natural plant shape. Drop out a leader.
- All plants shall bear the name relationship to finished grade as it bears to previous existing grade.
- All root balls removed from containers shall be scarified.
- Mulch - 3" clean pine needles.

BUFFER REVEGETATION PLAN

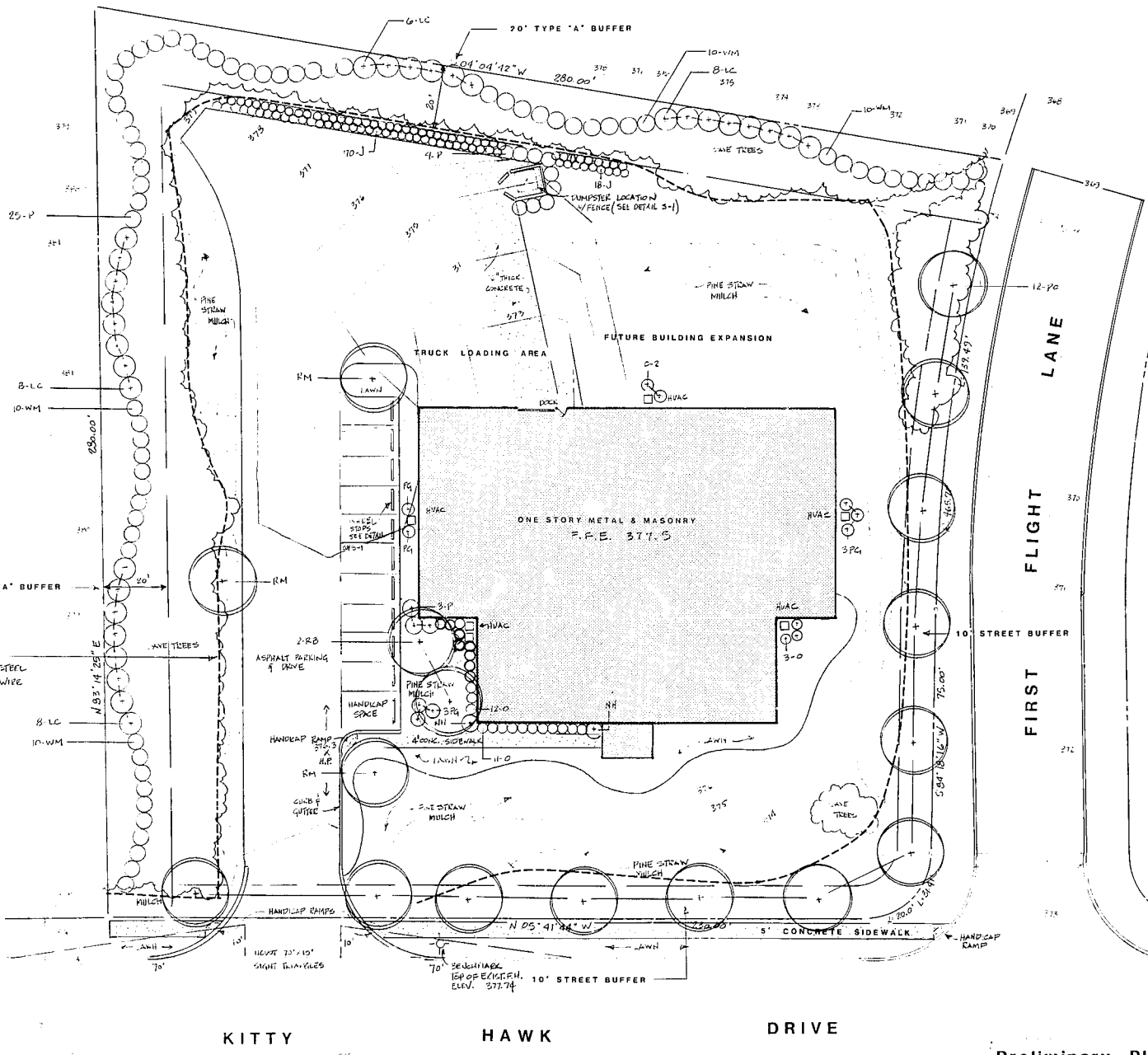
The following list of plant materials shall be installed at the site and quantities shown whenever buffers are disturbed by grading or other construction activity.

MINIMUM REQUIRED PLANTS IN BUFFERS:

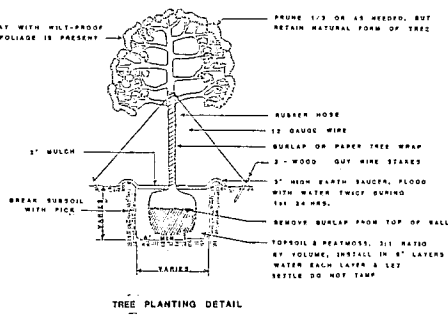
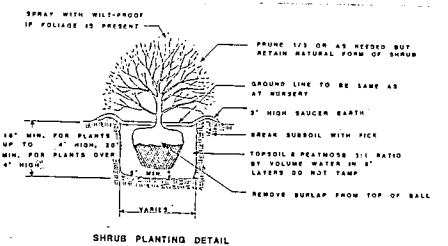
- Two (2) upper story canopy trees of 2.5" caliper minimum.
- Two (2) understory trees of 1.5" caliper and 7' height, minimum.
- Two (2) evergreen trees of 2.5" caliper and 4' height, minimum.
- Seven (7) evergreen shrubs 18" in height and 3 gallon container size, minimum.
- Eight (8) deciduous shrubs 18" in height and 3 gallon container size, minimum.
- Twenty-two (22) ground covers with a container size of one gallon, installed on slope equal or greater than 2:1/2:1, minimum.

NOTE: These types and quantities shall be used per 2,000 square feet of disturbed buffer area.

LOT 12 KITTY HAWK
ZONE N.B.
VACANT



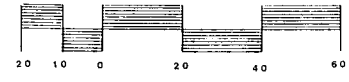
LOT 5 KITTY HAWK
ZONE N.B.
VACANT



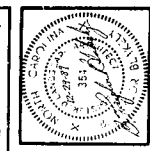
NOTES

- Survey information and field notes are in accordance with the report by Henry E. Smith, No. W 3155, dated December 21, 1955.
- All construction to be in accordance with Code of City ordinances.
- This site has a tree cover consisting of loblolly pines of up to 12 inch caliper spaced at approximately 20 feet on center. There are very few understory trees. There are a few spruce and firs of from 1 inch to 3 inch caliper. There are no naturally large canopy trees on this site.
- Sanitary sewage flow is approximately 150 gpd based on 6 employees at 25 employees.

GRAPHIC SCALE SCALE 1" = 20'



Preliminary Plan
not for construction



BLAKELY DESIGN GROUP
Landscape Architecture
Land Planning

16 E. Rowan St., Suite 208, Raleigh, NC 27609
Telephone (919) 707-0907

LANDSCAPE PLAN

BETTER BUSINESS FORMS

Sheet
S-3
Sheets