

FLOOR PLAN NOTES

#1 PROVIDE SOUND BATT INSULATION IN WALLS AS SHOWN.

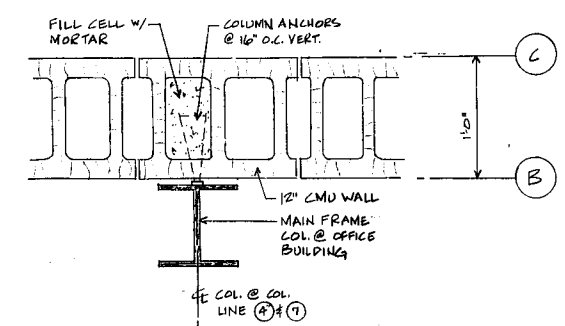
#2 FOR BLOCK WALL W/ 1/2" ROBBING STRIPS & 5/16" GYP. BOARD

#3 CARRY DOWNSPOUT TO UNDER SLAB IN 6" WALL; PIPE TO OUTSIDE BUILDING LINE; DISCHARGE AT GRADE

FLOOR PLAN
SCALE: 1/8" = 1'-0"

DOOR SCHEDULE			
NO.	SIZE	TYPE	REMARKS
1	3'-0" x 7'-0" (PAIR)	ALUMINUM STOREFRONT	BRONZE
2-14	3'-0" x 7'-0"	SOLID CORE BIRCH VENEER	H.M. FRAME
15	2'-6" x 7'-0" (PAIR)	BIRCH VENEER B1-FOLD	
16-17	3'-0" x 7'-0"	HOLLOW METAL IN H.M. FRAME	"B" LABEL
18	3'-0" x 7'-0"	HOLLOW METAL IN H.M. FRAME	
19	3'-0" x 9'-0"	OVERHEAD DOOR	
20	3'-0" x 7'-0"	SOLID CORE BIRCH VENEER	H.M. FRAME

FINISH SCHEDULE						
SYMBOL	FLOOR	BASE	WALLS	CEILING	REMARKS	
○	CARPET	VINYL COMPOSITION TILE	CONCRETE	4" ROBBEE	PAINTED GYP. BOARD	
○					PAINTED BLOCK	
○					EXPOSED SPLIT RIB BLOCK	
○					2" x 2" ACQUAST TILE	
○					EXPOSED CONSTRUCTION	



1:1 DETAIL @ COLUMN
SCALE: 1/2" = 1'-0"

drawn by: P-LT
checked by: H-
proj. no.: 8746
date: JANUARY 98

H.S. ANNIS ARCHITECT, AIA
member of the American Institute of Architects
P.O. BOX 885 GARNER, N.C. 27829 (919) 772-5555

OFFICE & WAREHOUSE FOR:
BETTER BUSINESS FORMS
CARY, NORTH CAROLINA

BOBBITT
DESIGN-BUILD

1
FLOOR PLAN

