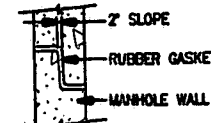
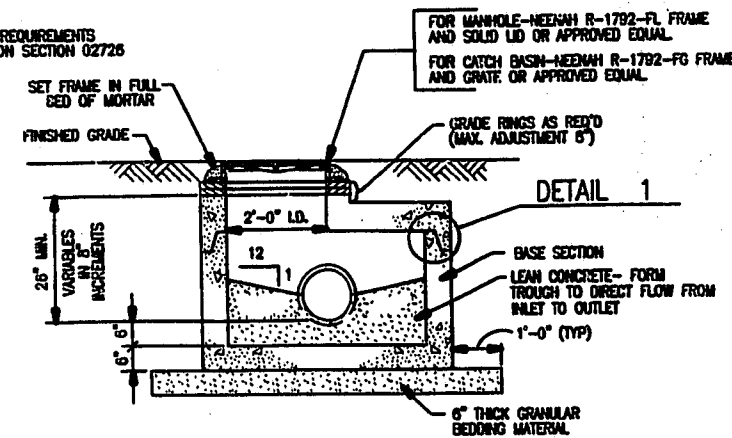


TYPICAL PRECAST REINFORCED
CONCRETE MANHOLE/CATCH BASIN
DETAIL
N.T.S.

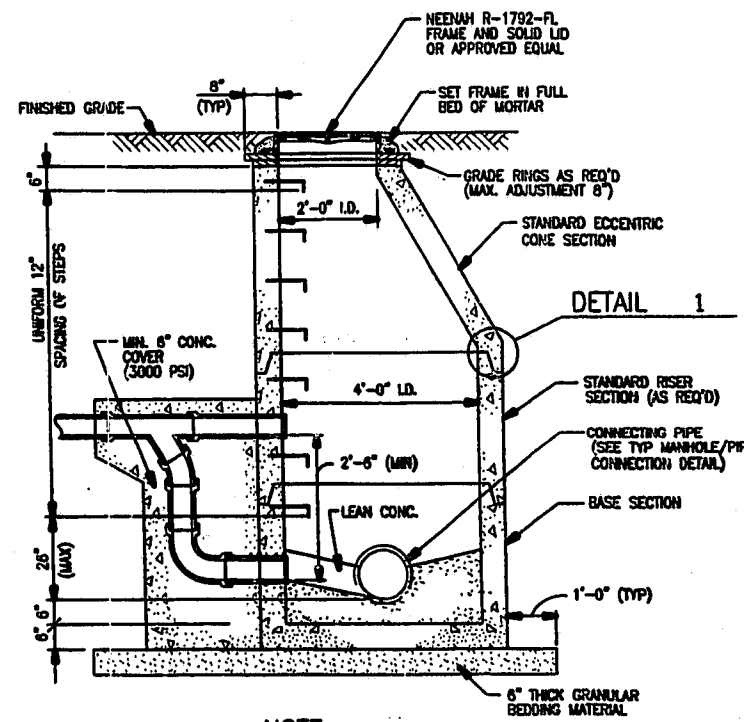


DETAIL 1
N.T.S.

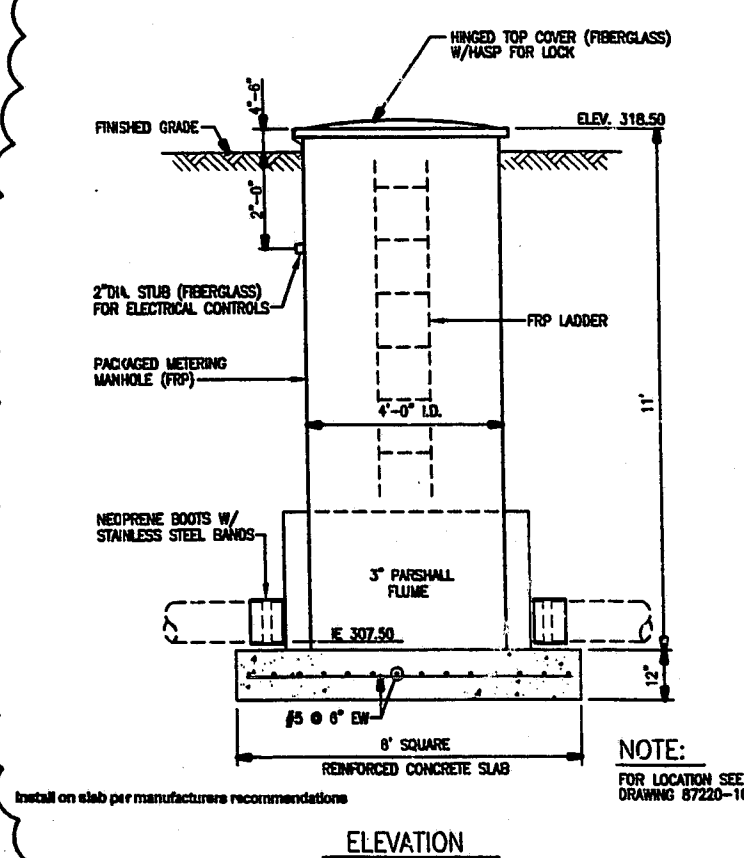
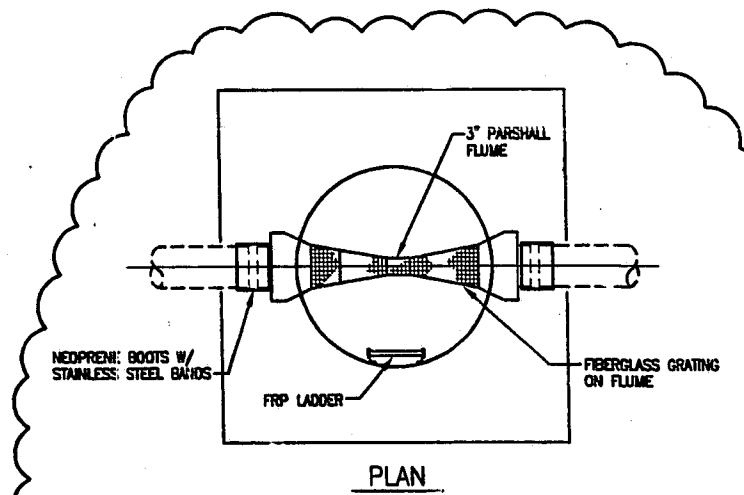
NOTE:
FOR TECHNICAL REQUIREMENTS
SEE SPECIFICATION SECTION 02728



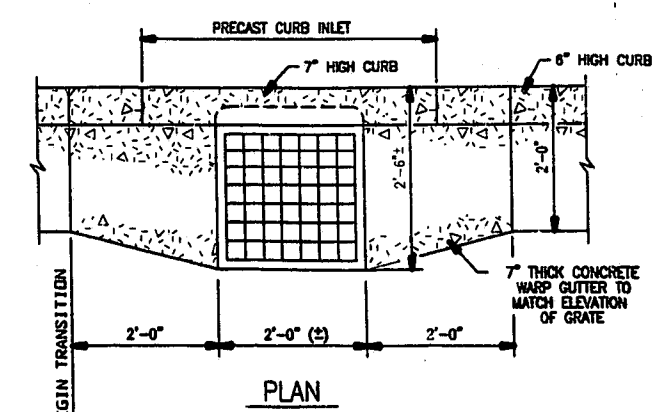
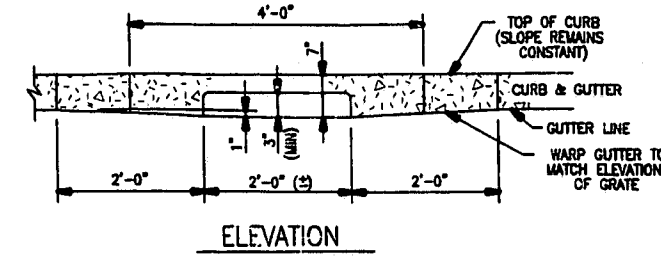
TYPICAL PRECAST REINFORCED
CONCRETE SHALLOW CATCH BASIN/
MANHOLE DETAIL
N.T.S.



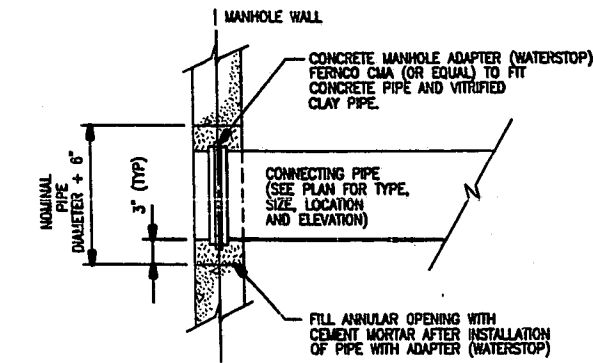
TYPICAL PRECAST REINFORCED
CONCRETE DROP MANHOLE
N.T.S.



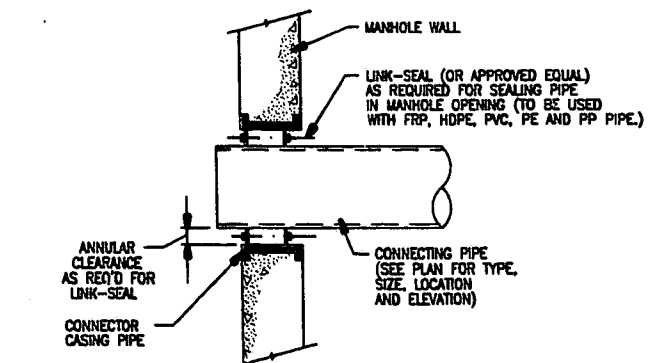
SANITARY SEWER
SAMPLING/METERING MANHOLE
N.T.S.



STANDARD CURB & GUTTER
TO CURB INLET
TRANSITION DETAIL
N.T.S.



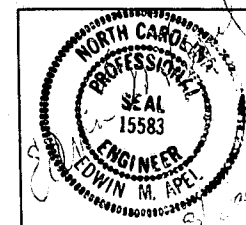
TYPICAL MANHOLE/PIPE
CONNECTION DETAIL
(FOR RCP AND VCP)
N.T.S.



LINK SEAL - WALL/PIPE
CONNECTION DETAIL
(FOR FRP, HDPE, PVC, PE AND PP PIPE)
N.T.S.

99-SP-160
APPROVED
SP 8/18/99

FLUOR DANIEL



EDWIN M. APEL
CIVIL ENGINEER OF RECORD
864/281-8252

BIIGEN, INC.
LARGE SCALE MANUFACTURING FACILITY
RESEARCH TRIANGLE PARK, NORTH CAROLINA
UNDERGROUND UTILITIES AND
STORM DRAINAGE STRUCTURE DETAILS

87220-10-C703

CAD DRAWING No. C7-003.DWG

REV.	DATE	DESCRIPTION	DESIGNER	APPROVED	REV.	DATE	DESCRIPTION	DESIGNER	APPROVED	ORIGIN	REFERENCE DRAWING	ORIGIN	REFERENCE DRAWING
A	5/25/99	ISSUED FOR APPROVAL	EMAPEL										
O	6/25/99	ISSUED FOR CONSTRUCTION	EMAPEL										
1	7/29/99	ADDED SAMPLING MANHOLE DETAIL	EMAPEL										