

INDEPENDENT INSURANCE AGENTS OF NC
 FINV 07655584
 DB 8622 PG 2599 / BM 2000 PG 827
 ZONED PDD M/R / USE OFFICE

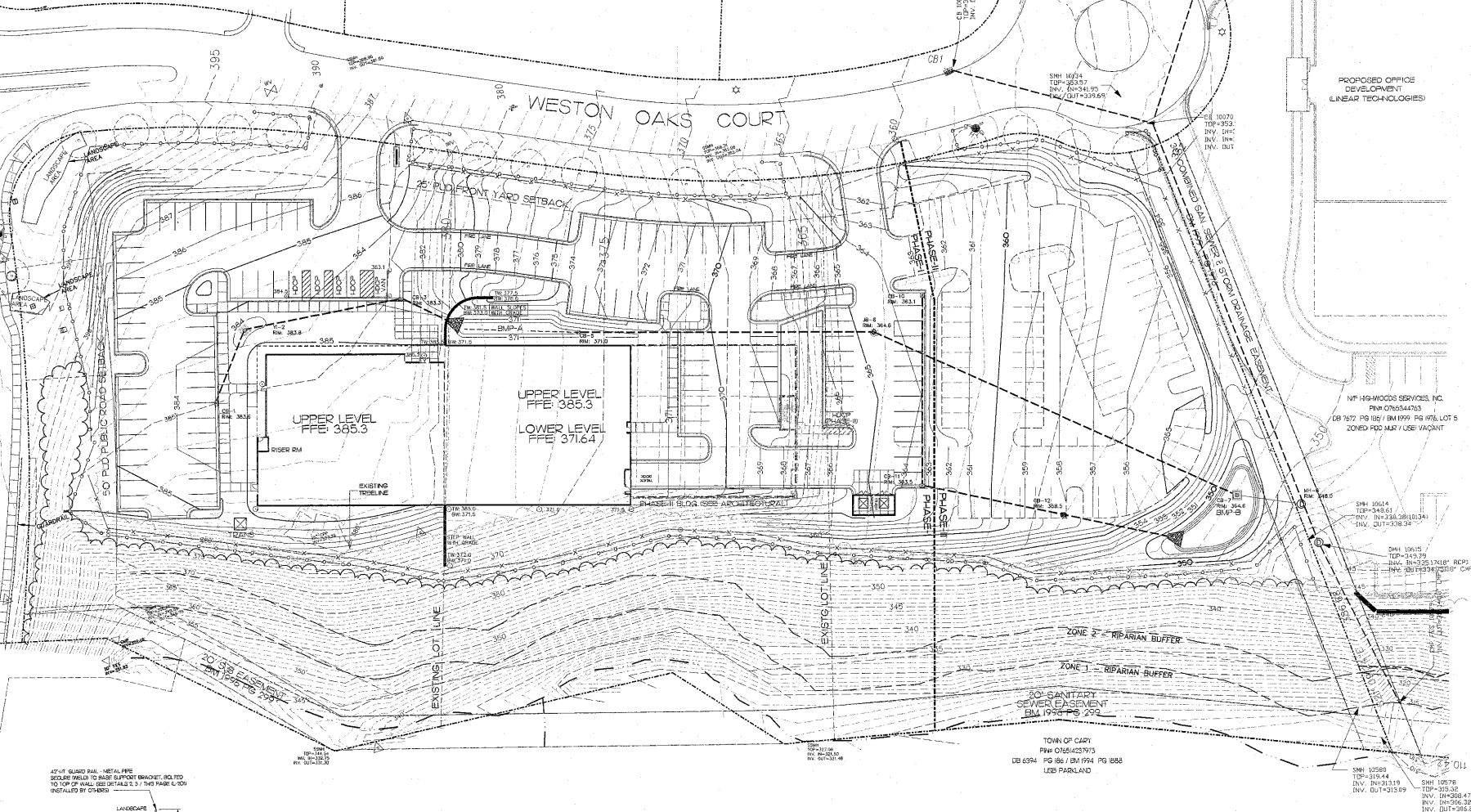
NF HIGHWOODS SERVICES, INC.
 FINV 07655576
 DB 8622 PG 2599 / BM 2000 PG 827
 ZONED PDD M/R / USE VACANT

NF HIGHWOODS SERVICES, INC.
 FINV 07655576
 DB 8622 PG 2599 / BM 2000 PG 827
 ZONED PDD M/R / USE VACANT

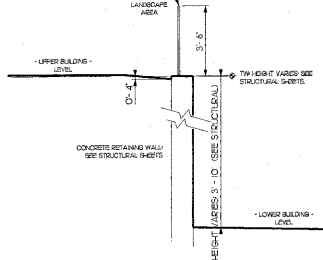
NORMWELL BLVD

WESTON OAKS COURT

PROPOSED OFFICE BUILDING
 DEVELOPER: LINEAR TECHNOLOGIES



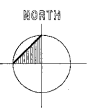
42" Ht. GUARD RAIL - METAL PIPE
 SECURE PANELS TO BASE SUPPORT BRACKET; BOLTED TO TOP OF WALL; SEE DETAIL 2.3.3. THIS PANEL L-201
 INSTALLED BY OTHERS



CONC. RETAINING WALL GUARD RAIL
 L-201

STORM DRAINAGE CHART

Upstream Node	Rim Elevation (ft)	Upstream Inlet Area (acres)	Upstream C _s Value	Downstream Node	Length (ft)	Total Flow (cfs)	Section Shape	#	Section Size	Material	Upstream Invert (ft)	Downstream Invert (ft)	Slope (ft/ft)
CB-1	383.80	0.54	0.70	YI-7	44	2.78	Circular	1	15 inch	Concrete	383.00	379.80	0.2921
YI-2	383.80	0.33	0.76	CB-3	92	4.53	Circular	1	15 inch	Concrete	379.40	376.00	0.6070
CB-3	383.30	0.29	0.95	Out-4	30	6.29	Circular	1	15 inch	Concrete	372.00	371.00	0.6333
CB-10	383.00	0.75	0.75	CB-11	114	4.09	Circular	1	15 inch	Concrete	369.00	358.25	0.6066
CB-11	383.50	0.20	0.95	CB-12	84	5.41	Circular	1	15 inch	Concrete	369.00	360.00	0.1071
CB-12	358.50	0.07	0.95	Out-13	62	6.87	Circular	1	15 inch	Concrete	348.80	346.00	0.0128
CB-5	371.00	0.40	0.76	JB-9	173	8.66	Circular	1	18 inch	Concrete	366.00	361.00	0.6289
JB-6	384.60	N/A	N/A	CB-7	296	8.59	Circular	1	18 inch	Concrete	356.00	344.00	0.6558
CB-7	349.00	0.85	0.85	MH-8	38	19.81	Circular	1	18 inch	Concrete	343.80	338.27	0.1682
MH-8	348.00	N/A	N/A	EX-MH	25	21.70	Circular	1	18 inch	Concrete	336.27	335.17	0.6440
EX-MH	349.78	N/A	N/A	EX-Out	164	21.68	Circular	1	18 inch	CMP	334.75	314.14	0.1882
EX-GS	353.13	1.20	0.85	MH-6	240	4.62	Circular	1	18 inch	Concrete	346.87	338.27	0.6446



SCALE: 1" = 30'-0"

- ORIGINAL -
 FOR CONSTRUCTION



HagerSmith Design PA

Architecture
 Landscape Architecture
 Planning
 Interior Design

PO Box 1308
 300 South Dawson Street
 Raleigh, North Carolina 27602
 Fax: 919.833.4050

99.821.5947 ©Copyright 2007

ASSOCIATE CONSULTANTS

CIVIL ENGINEERING & SURVEYING
 WITHERS & RAVENEL
 111 MCKENAN DRIVE
 CARY, NORTH CAROLINA 27511
 PHONE: 469.3340 FAX: 467.6008

STRUCTURAL ENGINEERING
 STEEL TECHNOLOGY, INC
 2620 BUSINESS PARK DRIVE
 ROCKY MOUNT, NC 27804
 PHONE: 252.937.1122

SCALE



PROJECT CHIEF: BOB

BIOLOGICS
 OFFICE BUILDING
 WESTON OAKS COURT
 CARY, NC

CLIENT

BIOLOGICS
 625 OBERLIN ROAD
 RALEIGH, NC 27605

07-SP-045
APPROVED
 TOWN OF CARY
 Approved by: [Signature] Date: 8-21-07
 Planning: [Signature] Date: 8-11-07
 Engineering: [Signature] Date: 8-12-07

REVISIONS:

NO.	DESCRIPTION	DATE
1	ISSUE FOR PERMITS	08-10-07
2	ISSUE FOR PERMITS	08-11-07
3	ISSUE FOR PERMITS	08-12-07

DRAWN BY: JSL, SCS
 CHECKED BY: JSL
 DATE ISSUED: 08-11-07