



HagerSmith Design PA

Architecture  
Landscape Architecture  
Planning  
Interior Design

PO Box 1308  
300 South Dawson Street  
Raleigh, North Carolina 27602  
Fax: 919.828.4020

99.828.5547 © Copyright 2007

ASSOCIATES / CONSULTANTS

CIVIL ENGINEERING & SURVEYING  
WITHERS & RAVENEL  
111 MCKENNA DRIVE  
CARY, NORTH CAROLINA 27511  
PHONE: 469.3340 FAX: 467.6008

STRUCTURAL ENGINEERING  
STEEL TECHNOLOGY, INC  
2620 BUSINESS PARK DRIVE  
ROCKY MOUNT, NC 27804  
PHONE: 252.937.7122

SEALS



PROJECT 060-008

**BIOLOGICS**  
OFFICE BUILDING  
WESTON OAKS COURT  
CARY, NC

CLIENT

**BIOLOGICS**  
625 OBERLIN ROAD  
RALEIGH, NC 27605

07-SP-045  
APPROVED  
TOWN OF CARY

Approved by: [Signature] Date: 6-12-07  
Drawing: [Signature] Date: 6-12-07  
Engineering: JS

DRAWING TITLE

SITE LIGHTING PLAN

REVISIONS

NUMBER	DESCRIPTION	DATE
1	ISSUE FOR PERMIT	05-10-07
2	REVISED PERMIT	06-12-07
3	REVISED PERMIT	06-12-07

DRAWN BY: PGN  
CHECKED BY: R. Stephens  
DATE REVISION: 04/09/2007  
PROJECT: L-504  
OFF: [Signature]

CALCULATION SUMMARY		GRID / TYPE	# PYS	SPAC	GROUP	AVE	MAX	MIN	MAX/MIN	AVE/MIN
AREA NAME	DISCOUNTS	parking	674	1000	(*)	185	828	0.49	16.83	3.79
	98340x54.0FT	property line	574	1000	(*)	0.04	0.63	0.00	N/A	N/A

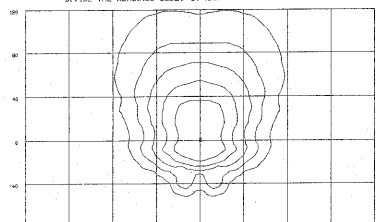
SCHEDULES (07-0076) LUMINAIRE SCHEDULE		LAMP	LUMENS	MOUNTING/BALAST	EFF	QTY
40FT	TYPE SYMBOL DESCRIPTION	(1) MS-400/HR	39000	39" HT MH 48K FT MH	064	3
S40A	GE S840 L/POLE (1) "540" S840 L-1/POLE	(1) MS-400/HR	39000	39" HT MH 48K MH	064	6
S40B	GE S840 2/POLE/180 (2) "540" S840 L-1/POLE	(2) MS-400/HR	39000	39" HT MH 48K MH	064	1

ISOFOOTCANDLE CURVES

FIXTURE SHEETBOX - FORWARD THROW  
MOUNTING HEIGHT: 30 FT  
LAMP: 400W, 39,000 LUMENS, METAL HALIDE  
PATTERN TYPE: EV, FULL CUTOFF

ASSY # L40MHL30FT (BLACK)

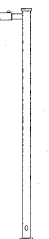
NOTE: THE FOOTCANDLE READINGS BELOW ARE MAINTAINED AND HAVE BEEN DEPRECIATED FOR LAMP LUMEN DEPRECIATION AND LUMINAIRE LIGHT DEPRECIATION. FOOTCANDLE READINGS SHOULD BE DIVIDED BY 64.



LEGEND OUTER TO INNER: 0.100, 0.250, 0.500, 1.00, 2.00

This design contains Special Order fixtures.  
Please allow additional lead time for these items.

40FT

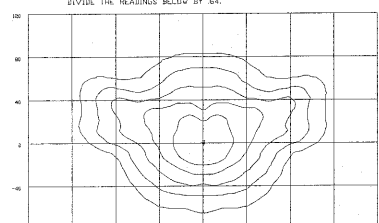


ISOFOOTCANDLE CURVES

FIXTURE SHEETBOX  
MOUNTING HEIGHT: 30 FT  
LAMP: 400W, 39,000 LUMENS, METAL HALIDE  
PATTERN TYPE: III, FULL CUTOFF

ASSY # L40MHL30-FLK (BLACK)

NOTE: THE FOOTCANDLE READINGS BELOW ARE MAINTAINED AND HAVE BEEN DEPRECIATED FOR LAMP LUMEN DEPRECIATION AND LUMINAIRE LIGHT DEPRECIATION. FOOTCANDLE READINGS SHOULD BE DIVIDED BY 64.

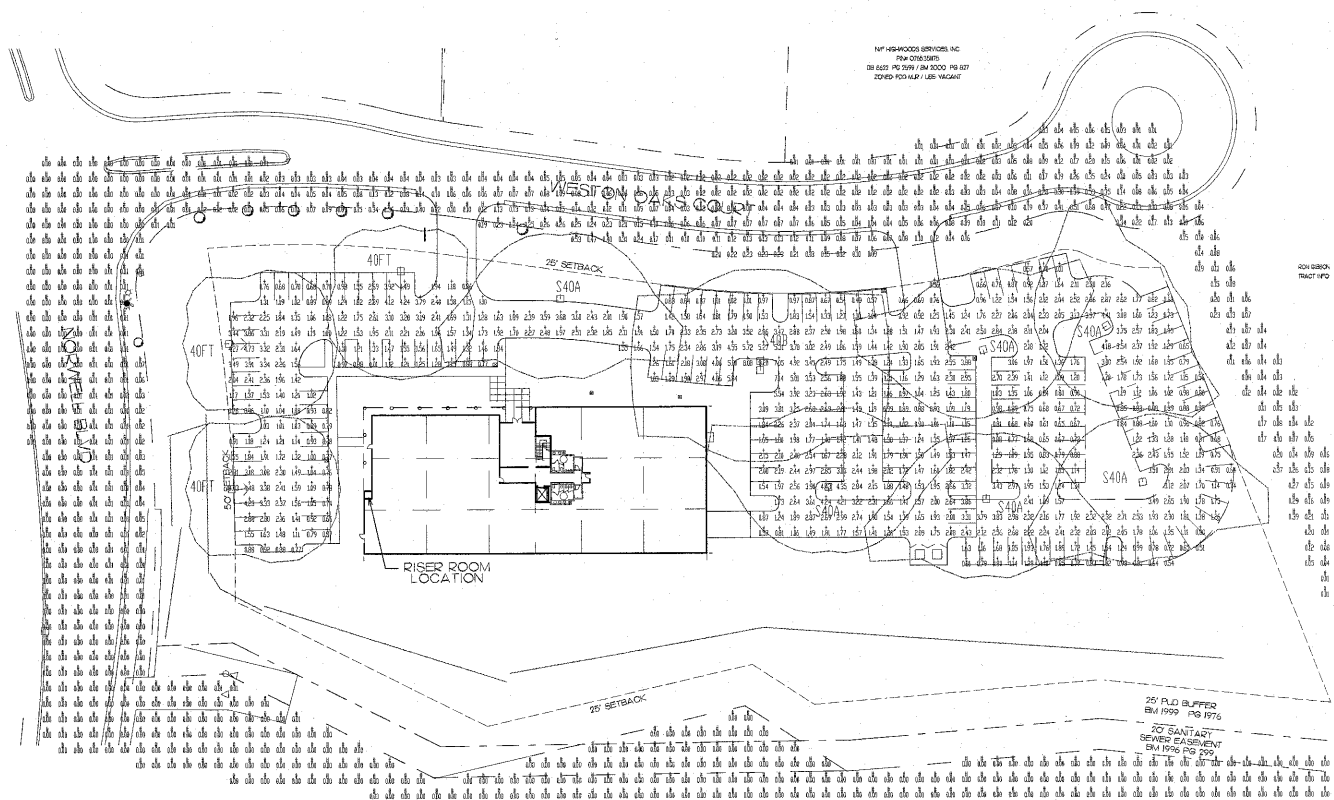


LEGEND OUTER TO INNER: 0.100, 0.250, 0.500, 1.00, 2.00

S40A



S40B

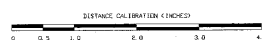


SCALE: 1" = 40'

LIGHTING DESIGN TOLERANCE

The calculated footcandle light levels in this lighting design are predicted values and are based on specific information that has been supplied to Progress Energy. Any inaccuracies in the supplied information, differences in luminous intensity, light area geometry including elevation differences, relative properties of surrounding surfaces, obstructions (large or otherwise) in the light area, or lighting from sources other than listed in this design may produce different results from the predicted values. Normal tolerances of voltage, lamp output, and ballast and luminaire manufacture will also affect results.

Customer approval: [Signature] Date: [Signature]



PROPRIETARY & CONFIDENTIAL

This document together with the concepts and designs presented herein, presented as an instrument of service, is the sole property of Progress Energy, and is intended only for the specific purpose and prospective client as stated in the title block of this drawing. Any use, copying, reproduction or disclosure of this drawing, design or any information contained herein by the prospective customer or other entities, including without limitation, architects, engineers, or equipment manufacturers is hereby expressly prohibited and shall not be permitted absent prior written consent from, and payment of compensation to Progress Energy. Progress Energy disclaims any liability or responsibility for any unauthorized use of or reliance on this document.

Description: 40K lumen Sheetbox fixtures (STD & FWT)  
Drawing No: 07-0076A

- ORIGINAL -  
FOR CONSTRUCTION