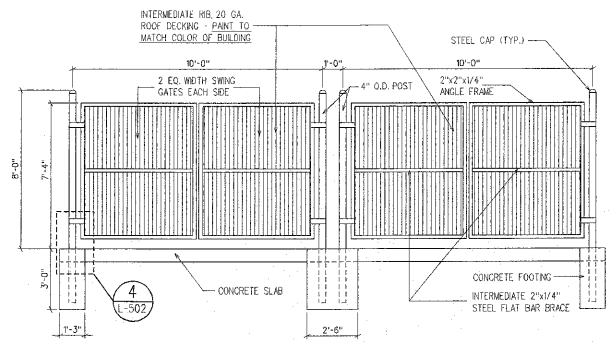
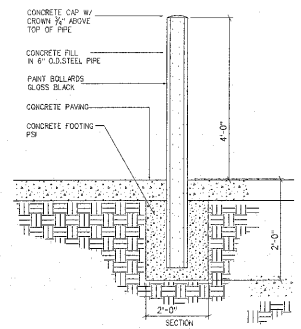


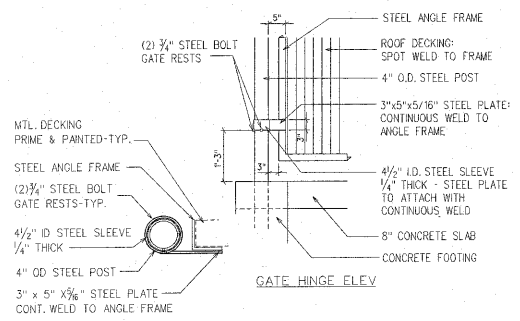
1 DUMPSTER PLAN
NTS (NOT TO SCALE)



2 DUMPSTER GATE (FRONT)
NTS



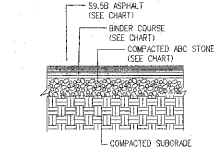
3 BOLLARD DETAIL
NTS



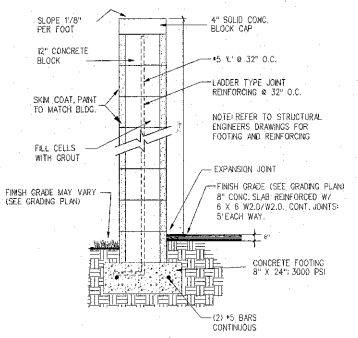
4 DUMPSTER GATE HINGE
NTS

ALL STEEL IS TO BE PRIMED AND PAINTED

PARKING AREA	ABC BINDER	59.5B
PARKING STALLS	6"	2.5"
TRAVEL Lanes	6"	2.5"
TRAVEL Lanes (4x4x7)	8"	2.5"



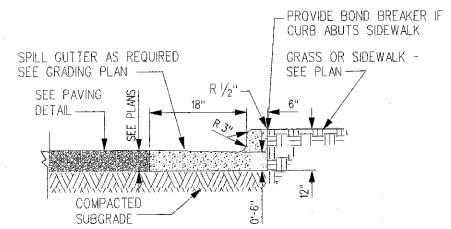
5 ASPHALT PAVING
NTS



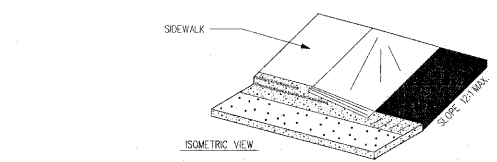
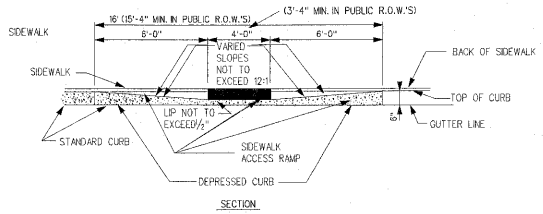
6 DUMPSTER SCREEN WALL SECTION
NTS

4 DUMPSTER GATE HINGE
NTS

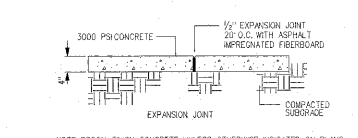
NOTE: 1/2" EXPANSION JOINT W/ ASPHALT - IMPREGNATED FIBER BOARD, 30" O.C. ALL CONCRETE TO BE 3000 PSI SPILL CURB IF REQUIRED - SEE GRADING PLAN.



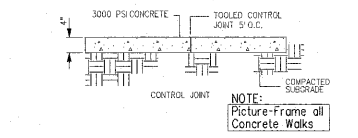
7 24" CURB & GUTTER
NTS



8 HANDICAP CURB RAMP DETAIL (CARY STD. *3.16)
NTS



NOTE: BROOK FINISH CONCRETE UNLESS OTHERWISE INDICATED ON PLANS.



9 CONCRETE SIDEWALK
NTS

NOTE: Picture-Frame all Concrete Walks



HagerSmith Design PA

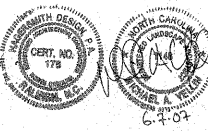
Architecture
Landscape Architecture
Planning
Interior Design

PO Box 1308
300 South Dawson Street
Raleigh, North Carolina 27602
Fax: 919.526.4050

99.82.5547 © Copyright 2007

CIVIL ENGINEERING & SURVEYING
WITHERS & RAVENEL
111 MCKENAN DRIVE
CARY, NORTH CAROLINA 27511
PHONE: 469.9340 FAX: 467.6008

STRUCTURAL ENGINEERING
STEEL TECHNOLOGY, INC.
2620 BUSINESS PARK DRIVE
ROCKY MOUNT, NC 27804
PHONE: 252.937.7122



BIOLOGICS
OFFICE BUILDING
WESTON OAKS COURT
CARY, NC

BIOLOGICS
625 OBERLIN ROAD
RALEIGH, NC 27605

07-SP-045
APPROVED
TOWN OF CARY
Approved by: SJC Date: 05-21-07
Drawing: 002 Date: 04-11-07
Beginning: 75 Date: 10-12-07

REVISIONS

NUMBER	DESCRIPTION	DATE

DRAWN BY: SMC
CHECKED BY: M.A.Y. DATE ISSUED: 04-7-07

DATE ISSUED: 04-7-07

ORIGINAL FOR CONSTRUCTION

L-502