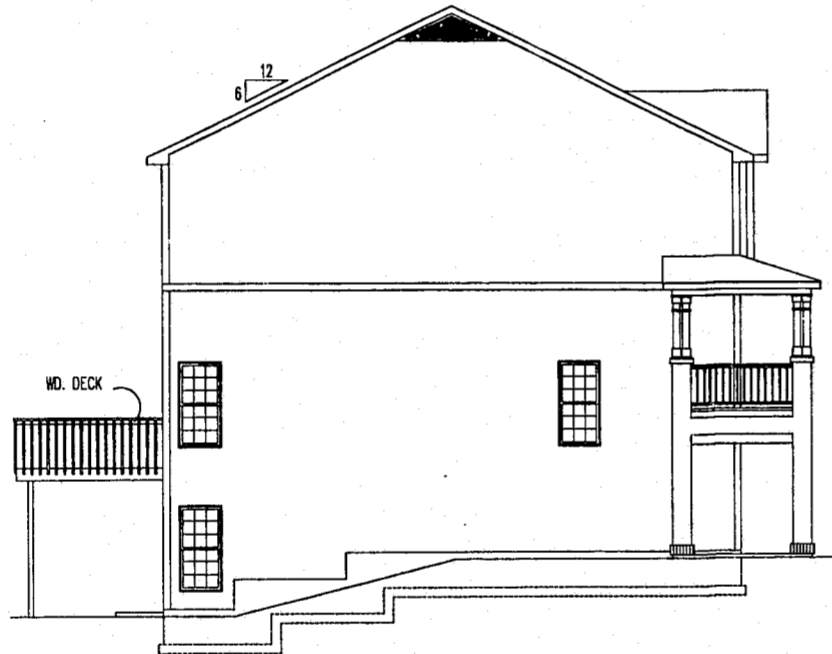


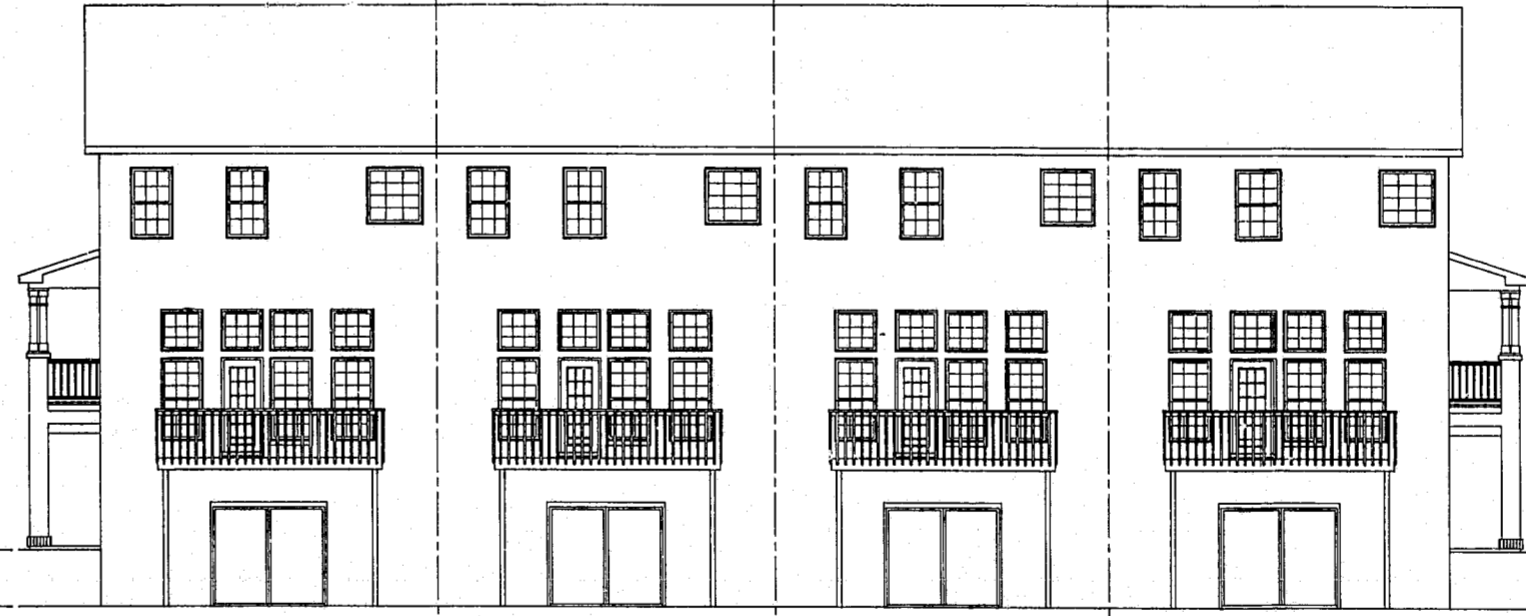
BLOOMSBURY AT CARY PARK MR-1 CARY, NORTH CAROLINA



SIDE ELEVATION
1/8" = 1'-0"



2511 ELEVATION C 1/8" = 1'-0"
2511 ELEVATION D 1/8" = 1'-0"
2511 ELEVATION C 1/8" = 1'-0"
2511 ELEVATION D 1/8" = 1'-0"



REAR ELEVATIONS
1/8" = 1'-0"

DURON Exterior Paint Colors

- Scheme #1:
Siding = 6515D Thunder Gray
Shake = 8513M Still Creek
Trim = One Coat White / 914
Front Door = AC144N Black Deco
- Scheme #2:
Siding = 7111W Angelica Blossom
Shake = 7113M Mustard Bloom
Trim = One Coat White / 914
Front Door = AC144N Black Deco
- Scheme #3:
Siding = 8605D English Pine
Shake = 8603M Gray Nut
Trim = One Coat White / 914
Front Door = AC144N Black Deco
- Scheme #4:
Siding = 8214M Tobacco Road
Shake = 8216N Dried Tobacco
Trim = One Coat White / 914
Front Door = AC144N Black Deco

Brick Color
General Shale
436 Commonwealth

* TYPICAL ALL BUILDINGS:
ALL ROOF PROJECTIONS SHALL BE PAINTED
& COLOR SIMILAR TO THE ROOF COLOR.

Roof: ASPHALT SHINGLE (TYPICAL)
COLORS: BAYWOOD
MOORE BLACK
SLATESSTONE
WEATHERED WOOD

02-SP-027
APPROVED
TOWN OF CARY

Approved by DL Date 8-26-02
Planning SP Date 9-17-02
Engineering SP (for TS) Date 9-8-02

• HOMES •
BEAZER

5811 Glenwood Avenue, Suite 200
Raleigh, NC (919) 881-9350

UNIT TYPE I #2511 - ELEVATIONS

DATE: 5-6-02