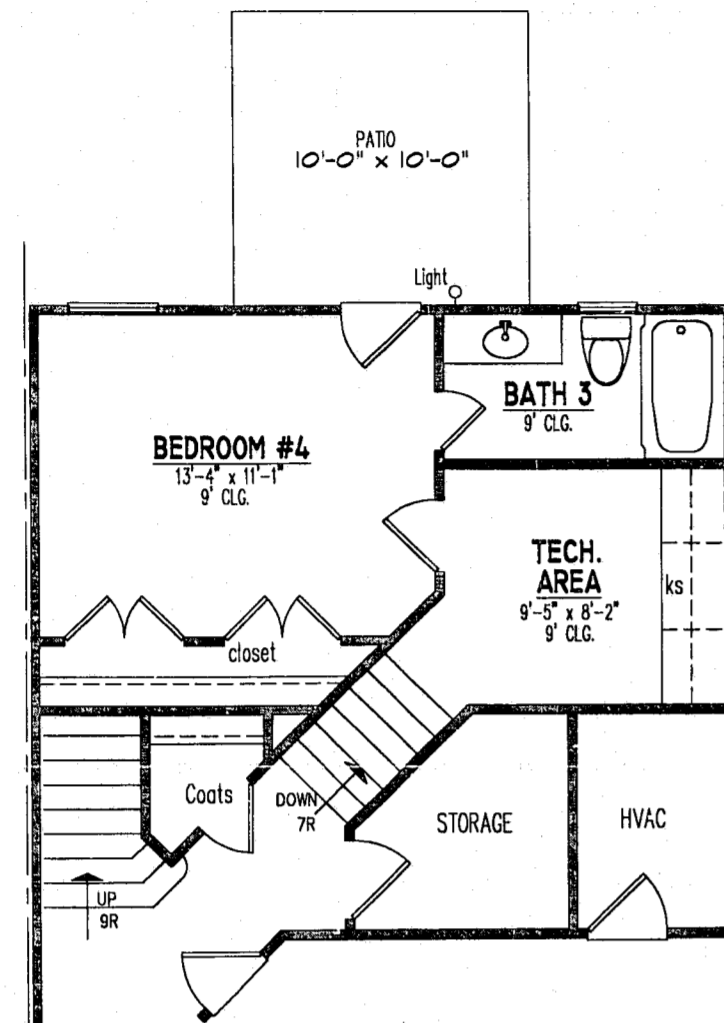
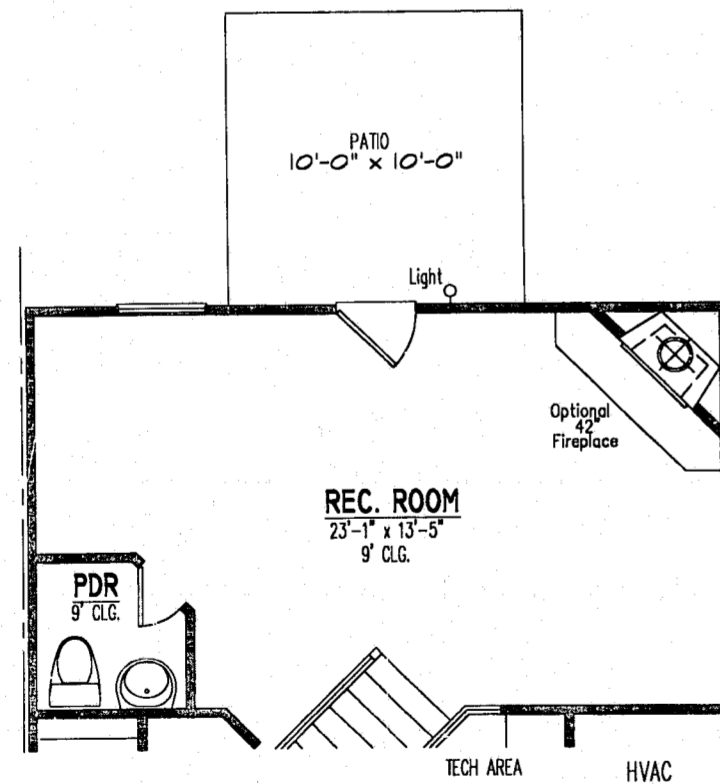


# BLOOMSBURY AT CARY PARK MR-I CARY, NORTH CAROLINA



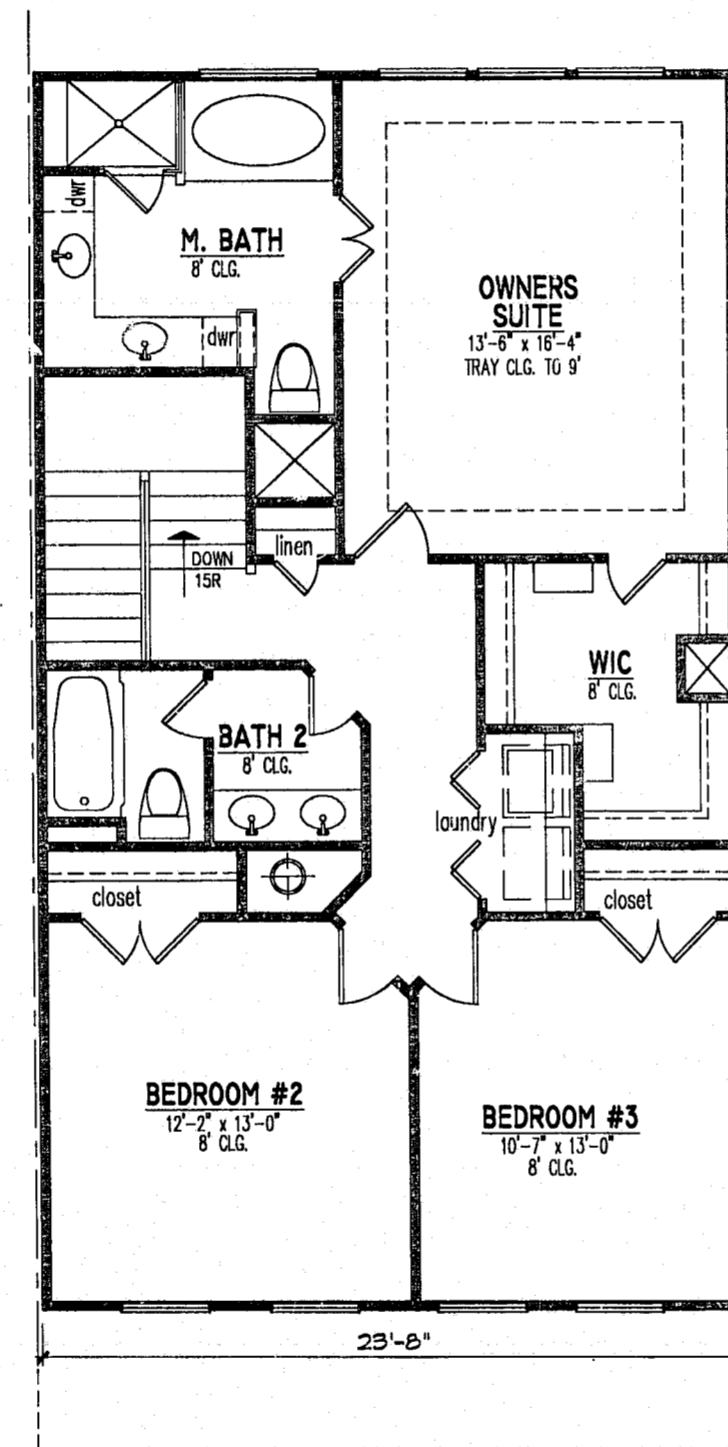
**OPTIONAL BEDROOM 4 & TECH. AREA  
IN LIEU OF REC. ROOM**

1/4" = 1'-0"



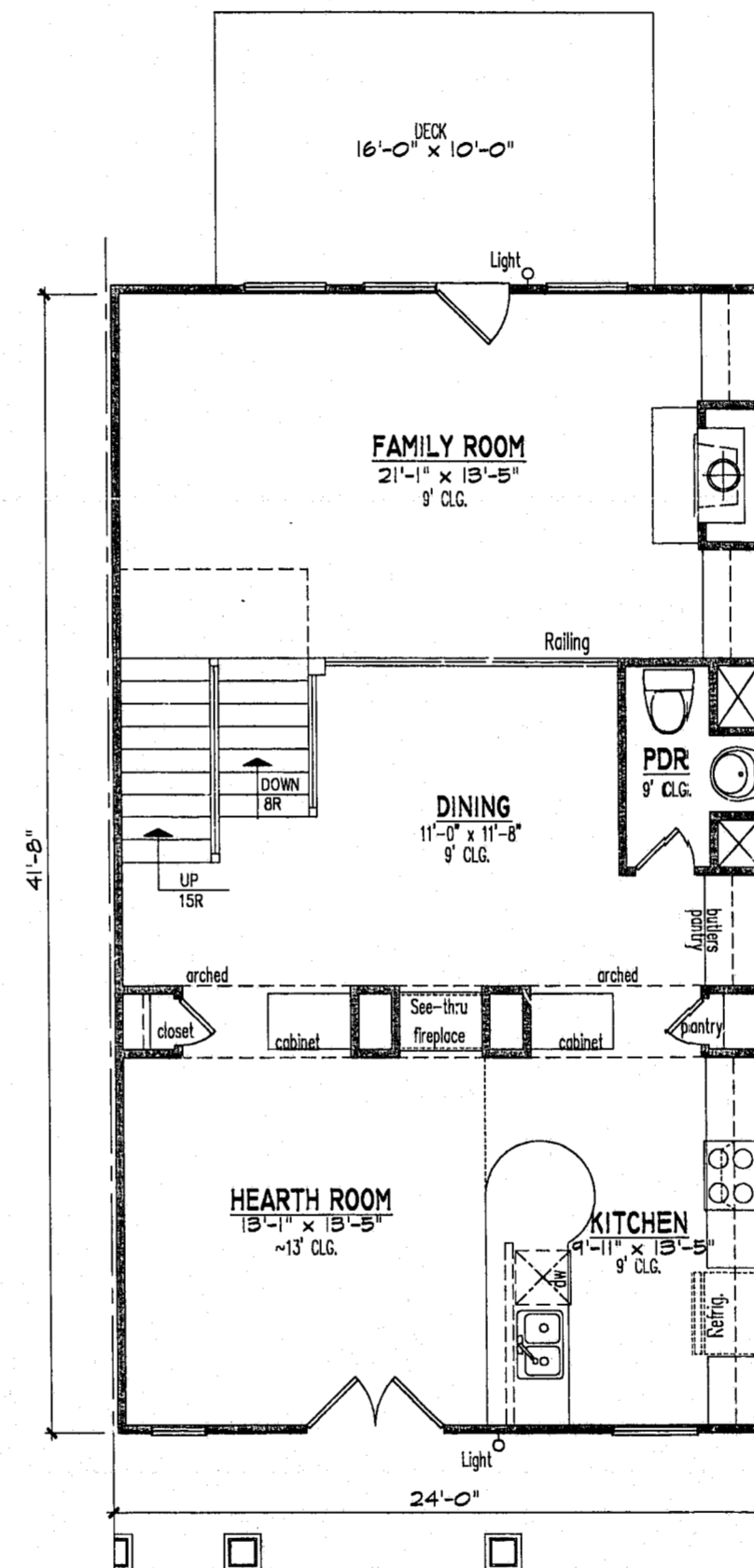
**OPTIONAL POWDER @ REC. ROOM**

1/4" = 1'-0"



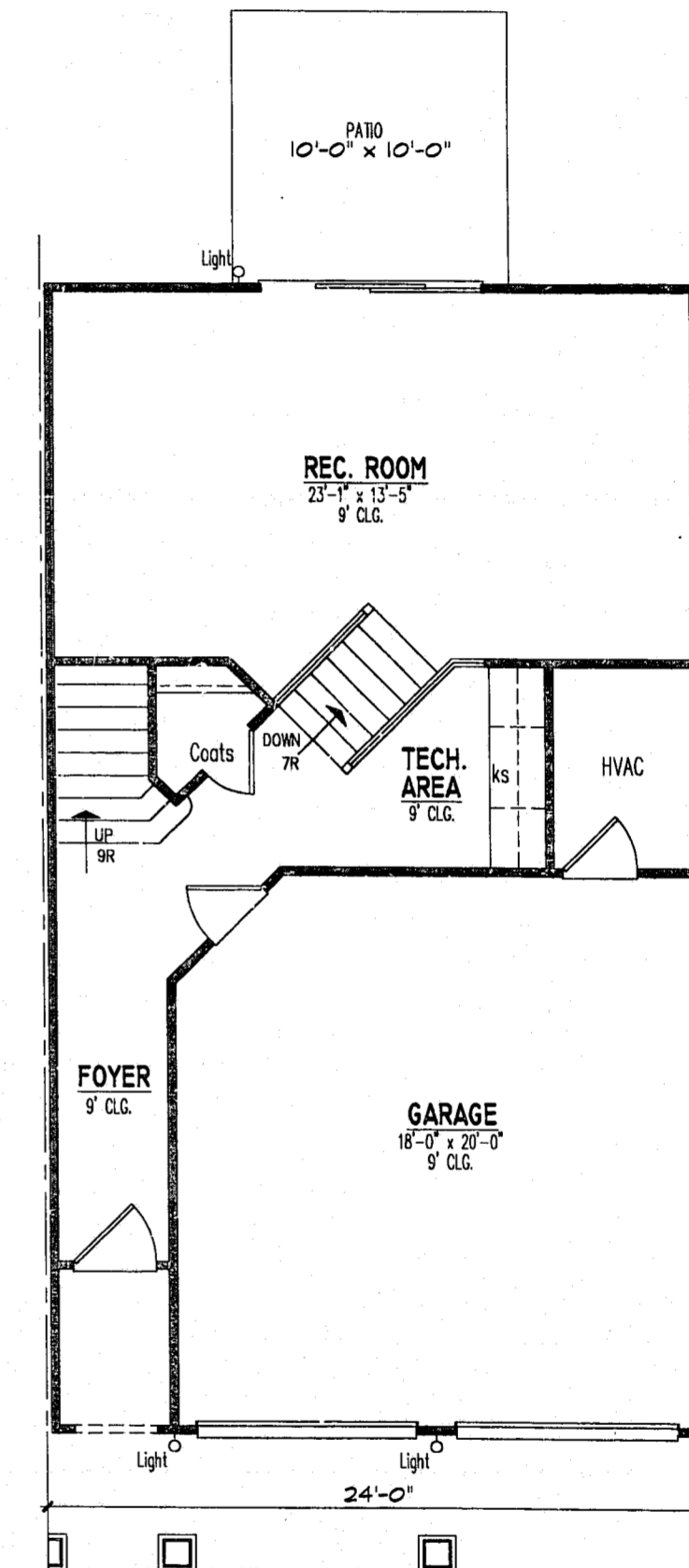
**SECOND FLOOR**

1/4" = 1'-0"



**FIRST FLOOR**

1/4" = 1'-0"



**LOWER LEVEL**

1/4" = 1'-0"

02-57-837  
**APPROVED  
TOWN OF CARY**

Approved by *DRC* Date 8-26-03  
Planning *PJP* Date 7-19-02  
Engineering *SP (62 TS)* Date 9-18-02

• HOMES •  
**BEAZER**

5811 Glenwood Avenue, Suite 200  
Raleigh, NC (919) 881-9350

**UNIT TYPE I #25II - FLOOR PLANS**

DATE: 5-6-02