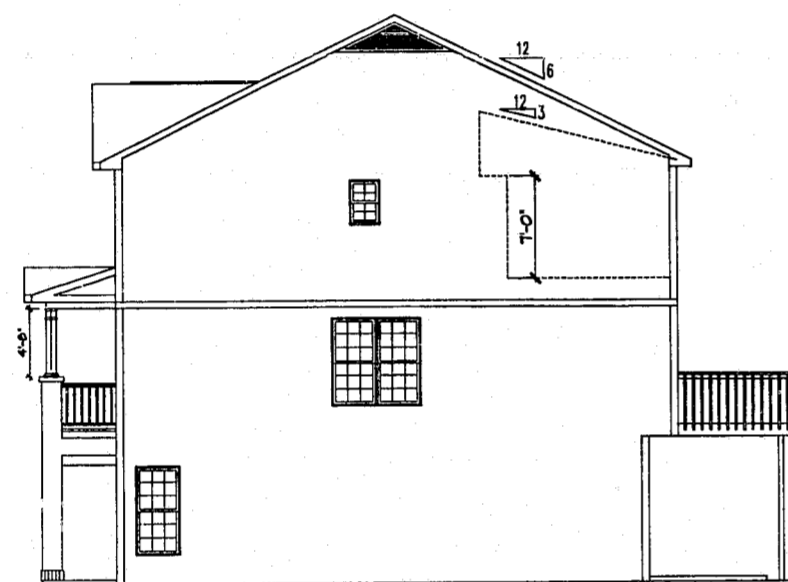
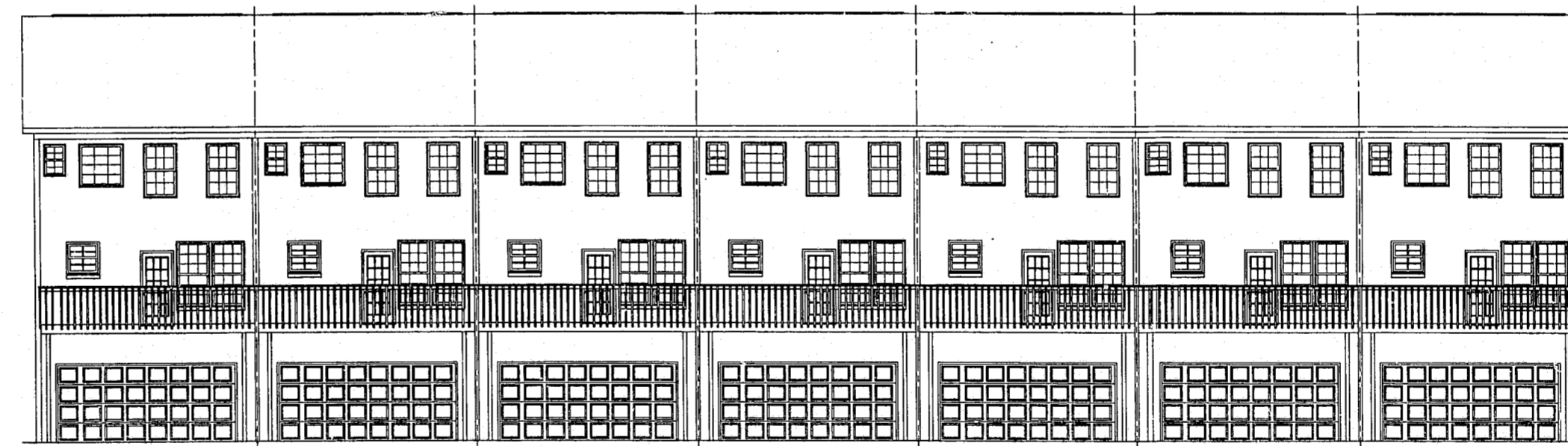
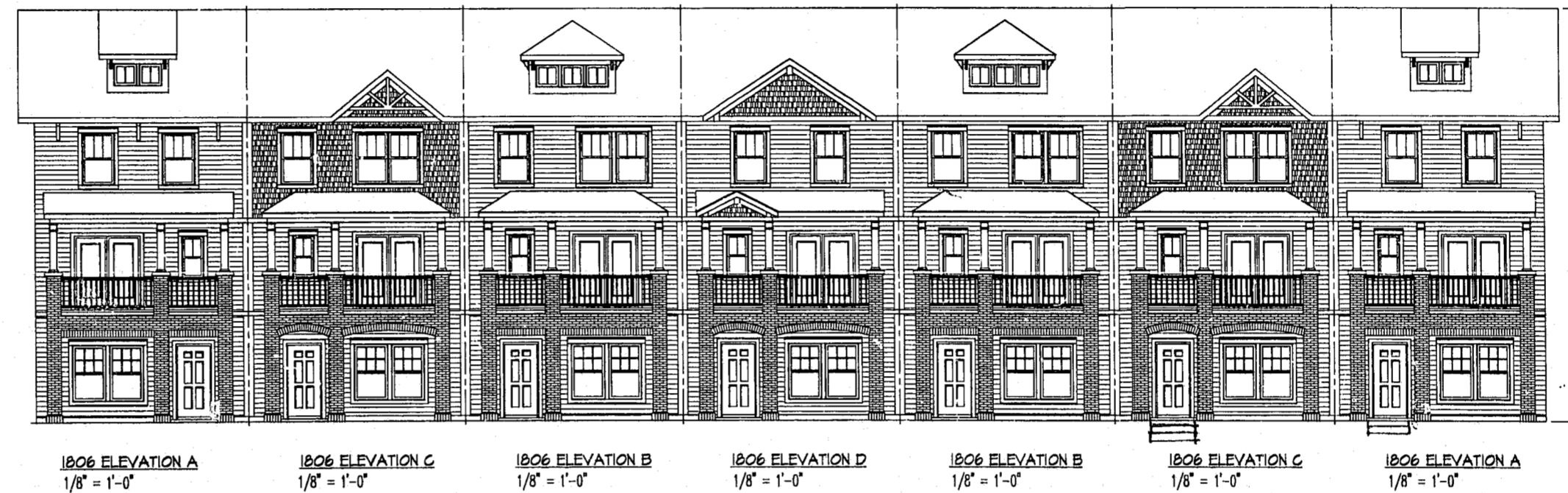


BLOOMSBURY AT CARY PARK MR-1 CARY, NORTH CAROLINA



SIDE ELEVATION
1/8" = 1'-0"



REAR ELEVATIONS
1/8" = 1'-0"

DURON Exterior Paint Colors

Scheme #1:
Siding = 6515D Thunder Gray
Shake = 8513M Still Creek
Trim = One Coat White / 914
Front Door = AC144N Black Deco

Scheme #2:
Siding = 7711W Angelica Blossom
Shake = 7713M Mustard Bloom
Trim = One Coat White / 914
Front Door = AC144N Black Deco

Scheme #3:
Siding = 8605D English Pine
Shake = 8603M Gray Nut
Trim = One Coat White / 914
Front Door = AC144N Black Deco

Scheme #4:
Siding = 8214M Tobacco Road
Shake = 8216N Dried Tobacco
Trim = One Coat White / 914
Front Door = AC144N Black Deco

Brick Color

General Shale
436 Commonwealth

02-P-027
APPROVED
TOWN OF CARY

Approved by DRC Date 8-26-02
Planning DD Date 9-17-02
Engineering SP (for TS) Date 9-18-02

• HOMES •
BEAZER

5811 Glenwood Avenue, Suite 200
Raleigh, NC (919) 881-9350

UNIT TYPE 2 #1806 - REAR ENTRY ELEVATIONS

DATE: 5-6-02

1/8" = 1'-0"