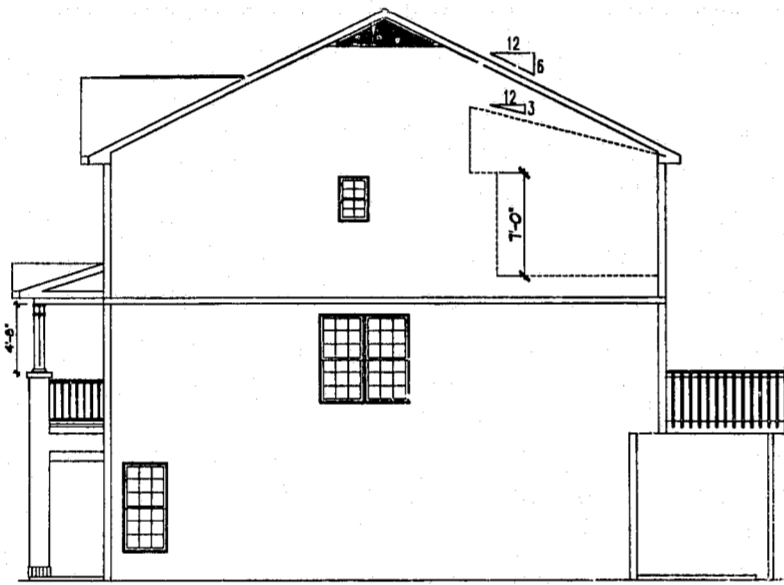


BLOOMSBURY AT CARY PARK MR-I CARY, NORTH CAROLINA



SIDE ELEVATION
1/8" = 1'-0"



1806 ELEVATION A 1/8" = 1'-0"
1806 ELEVATION G 1/8" = 1'-0"
1806 ELEVATION B 1/8" = 1'-0"
1806 ELEVATION D 1/8" = 1'-0"
1806 ELEVATION E 1/8" = 1'-0"
1806 ELEVATION C 1/8" = 1'-0"
1806 ELEVATION A 1/8" = 1'-0"



REAR ELEVATIONS
1/8" = 1'-0"

- DURON Exterior Paint Colors**
- Scheme #1:**
Siding = 6515D Thunder Gray
Shake = 8513M Still Creek
Trim = One Coat White / 914
Front Door = AC144N Black Deco
- Scheme #2:**
Siding = 7711W Angelica Blossom
Shake = 7713M Mustard Bloom
Trim = One Coat White / 914
Front Door = AC144N Black Deco
- Scheme #3:**
Siding = 8605D English Pine
Shake = 8603M Gray Nut
Trim = One Coat White / 914
Front Door = AC144N Black Deco
- Scheme #4:**
Siding = 8214M Tobacco Road
Shake = 8216N Dried Tobacco
Trim = One Coat White / 914
Front Door = AC144N Black Deco
- Brick Color**
General Shale
436 Commonwealth

02-4P-037
APPROVED
TOWN OF CARY
Approved by DRC Date 8-28-02
Planning RDS Date 9-17-02
Engineering SP (6/15) Date 9-8-02

BEAZER • HOMES •
5811 Glenwood Avenue, Suite 200
Raleigh, NC (919) 881-9350

UNIT TYPE 3 #1806 - FRONT ENTRY ELEVATIONS
DATE: 5-6-02