

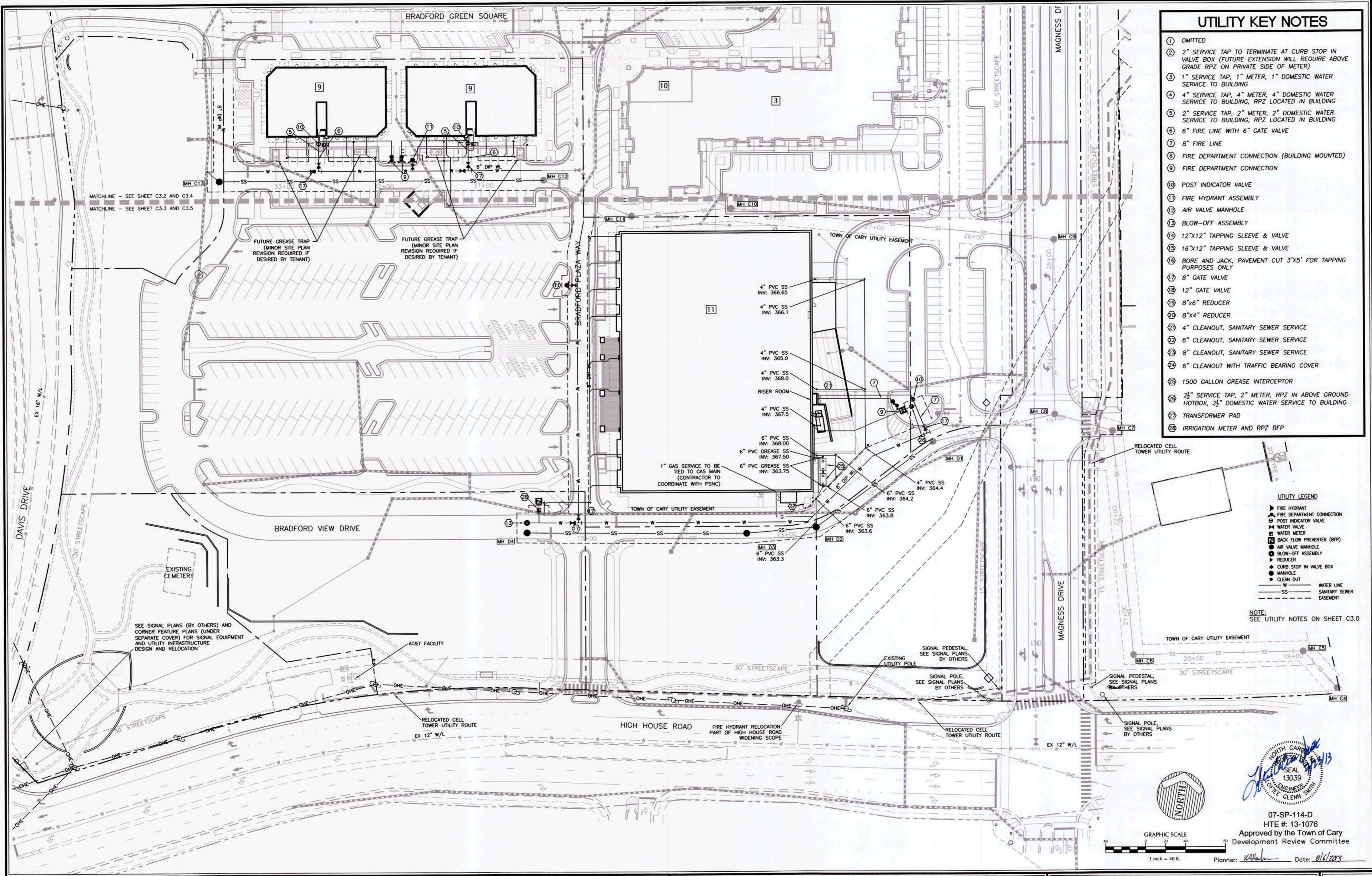
UTILITY KEY NOTES

- ① OMITTED
- ② 2" SERVICE TAP TO TERMINATE AT CURB STOP IN VALVE BOX (FUTURE EXTENSION WILL REQUIRE ABOVE GRADE RPZ ON PRIVATE SIDE OF METER)
- ③ 1" SERVICE TAP, 1" METER, 1" DOMESTIC WATER SERVICE TO BUILDING
- ④ 4" SERVICE TAP, 4" METER, 4" DOMESTIC WATER SERVICE TO BUILDING, RPZ LOCATED IN BUILDING
- ⑤ 2" SERVICE TAP, 2" METER, 2" DOMESTIC WATER SERVICE TO BUILDING, RPZ LOCATED IN BUILDING
- ⑥ 6" FIRE LINE WITH 6" GATE VALVE
- ⑦ 8" FIRE LINE
- ⑧ FIRE DEPARTMENT CONNECTION (BUILDING MOUNTED)
- ⑨ FIRE DEPARTMENT CONNECTION
- ⑩ POST INDICATOR VALVE
- ⑪ FIRE HYDRANT ASSEMBLY
- ⑫ AIR VALVE MANHOLE
- ⑬ BLOW-OFF ASSEMBLY
- ⑭ 12"x12" TAPPING SLEEVE & VALVE
- ⑮ 16"x12" TAPPING SLEEVE & VALVE
- ⑯ BORE AND JACK, PAVEMENT CUT 3'x5' FOR TAPPING PURPOSES ONLY
- ⑰ 8" GATE VALVE
- ⑱ 12" GATE VALVE
- ⑲ 8"x6" REDUCER
- ⑳ 8"x4" REDUCER
- ㉑ 4" CLEANOUT, SANITARY SEWER SERVICE
- ㉒ 6" CLEANOUT, SANITARY SEWER SERVICE
- ㉓ 8" CLEANOUT, SANITARY SEWER SERVICE
- ㉔ 6" CLEANOUT WITH TRAFFIC BEARING COVER
- ㉕ 1500 GALLON GREASE INTERCEPTOR
- ㉖ 2 1/2" SERVICE TAP, 2" METER, RPZ IN ABOVE GROUND HOTBOX, 2 1/2" DOMESTIC WATER SERVICE TO BUILDING
- ㉗ TRANSFORMER PAD
- ㉘ IRRIGATION METER AND RPZ BFP

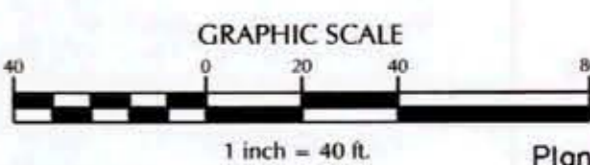
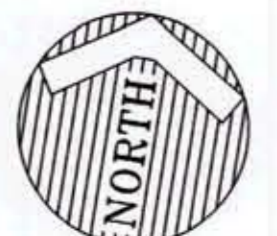
UTILITY LEGEND

- FIRE HYDRANT
- FIRE DEPARTMENT CONNECTION
- POST INDICATOR VALVE
- WATER VALVE
- WATER METER
- BACK FLOW PREVENTER (BFP)
- AIR VALVE MANHOLE
- BLOW-OFF ASSEMBLY
- REDUCER
- CURB STOP IN VALVE BOX
- MANHOLE
- CLEAN OUT
- W — WATER LINE
- SS — SANITARY SEWER EASEMENT

NOTE:
SEE UTILITY NOTES ON SHEET C3.0



SEE SIGNAL PLANS (BY OTHERS) AND CORNER FEATURE PLANS (UNDER SEPARATE COVER) FOR SIGNAL EQUIPMENT AND UTILITY INFRASTRUCTURE DESIGN AND RELOCATION



07-SP-114-D
HTE #: 13-1076
Approved by the Town of Cary
Development Review Committee
Planner: *KAH* Date: *8/6/2023*

No.	Revision	Date	By	Designer	Scale
1	07-SP-114-D 1st SUBMITTAL	03/14/13	PMO	PMO	AS NOTED
2	07-SP-114-D 2nd SUBMITTAL	05/02/13	TLM	TFW	03/14/13
3	PSM 1st SUBMITTAL	06/05/13	TLM	PMO	2061284.30
4	07-SP-114-D 3rd SUBMITTAL	06/13/13	TLM		
5	TOC APPROVAL	07/22/13	TLM		

BRADFORD
WAKE COUNTY
CARY
NORTH CAROLINA

DETAILED UTILITY PLAN - PHASE 2

WITHERS & RAVENEL
ENGINEERS | PLANNERS | SURVEYORS
111 MacKean Drive Cary, North Carolina 27511 tel: 919-469-3340 www.wITHERS&RAVENEL.com License No. C.0832

Sheet No.
C3.5

K:\00\08-1284\08-1284-30-Bradford Phase 2\CAD\Construction Drawings\07.15.13 TOC (Approved)\C3.1-13.dwg - Monday, July 22, 2013 3:02:59 PM - MCKENZIE, TUCKER