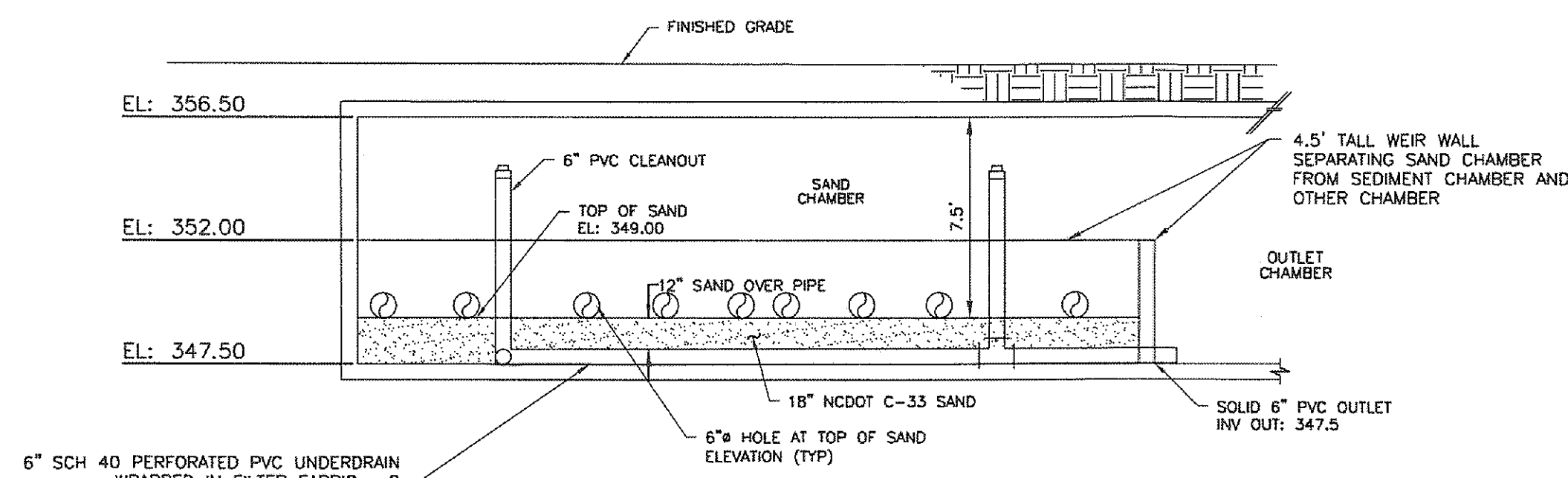
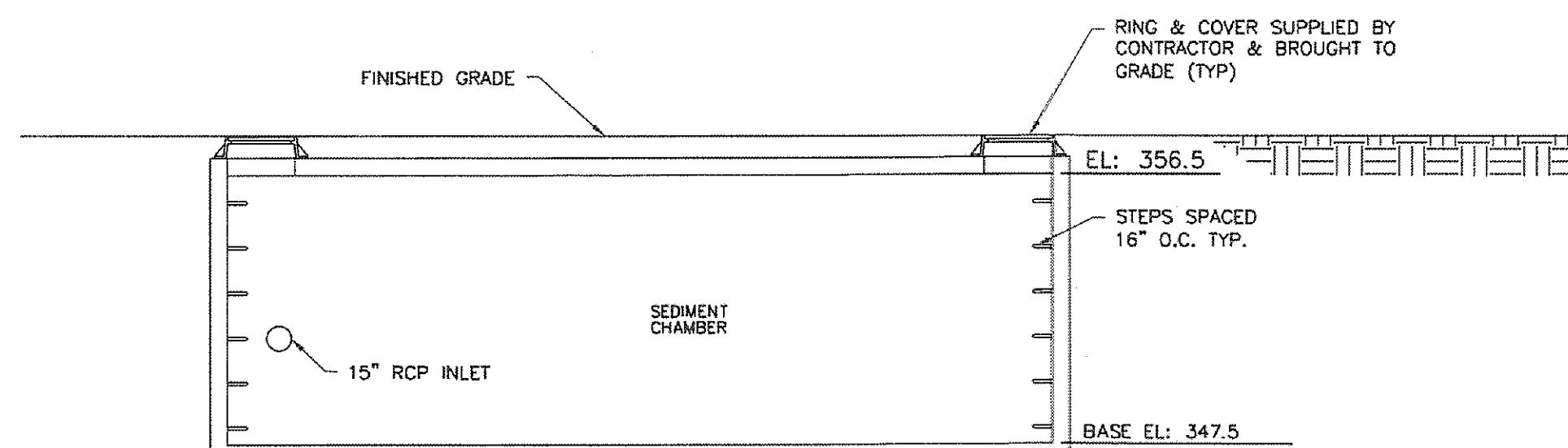


PLAN VIEW

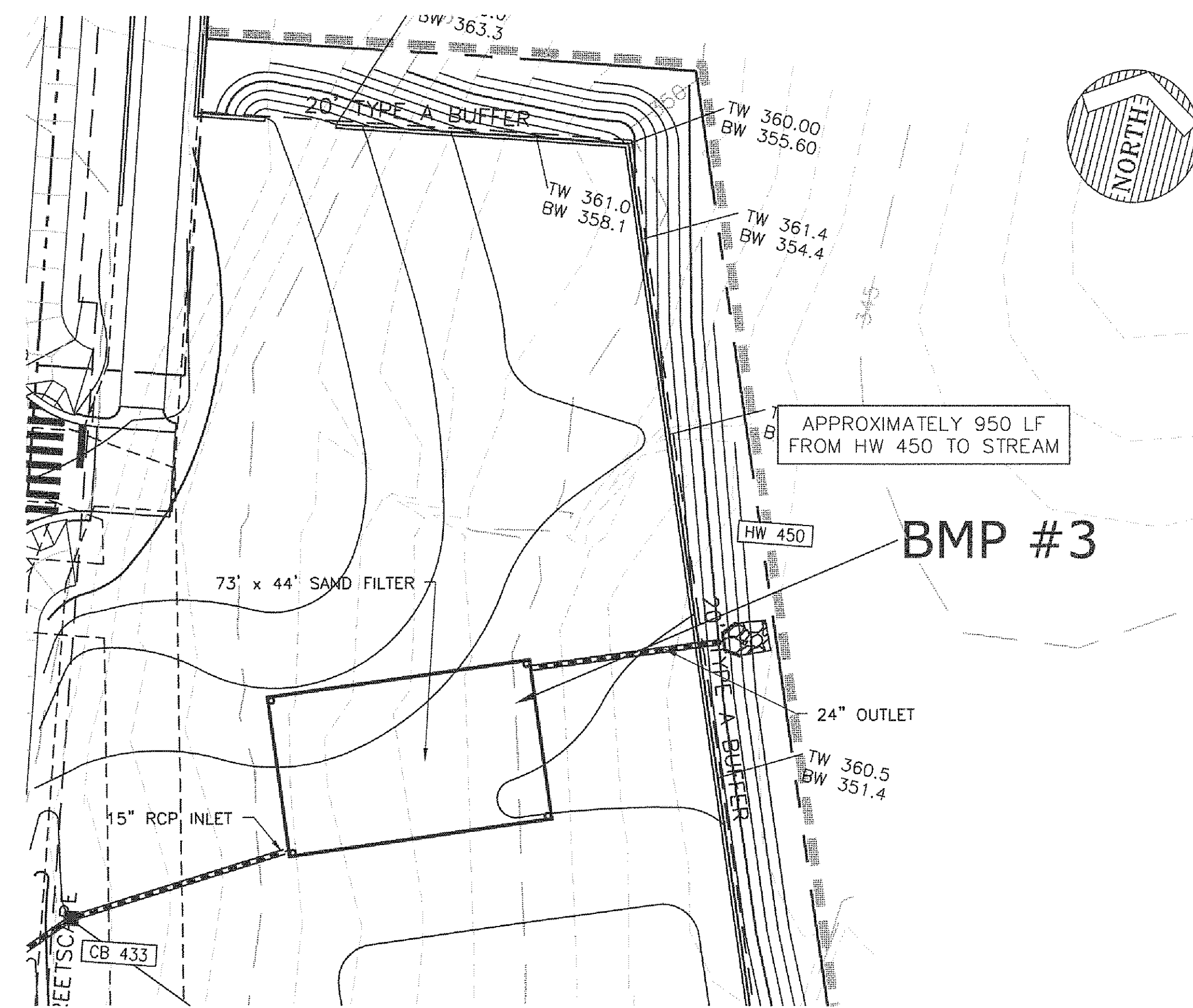


SECTION A-A

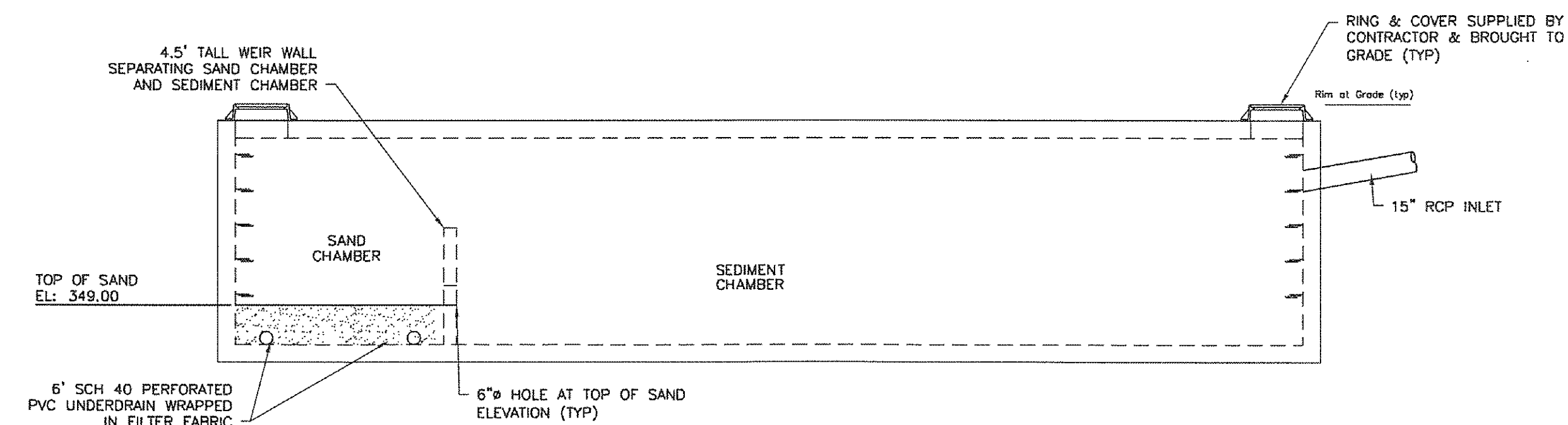


SECTION B-B

UNDERGROUND SAND FILTER  
N.T.S.



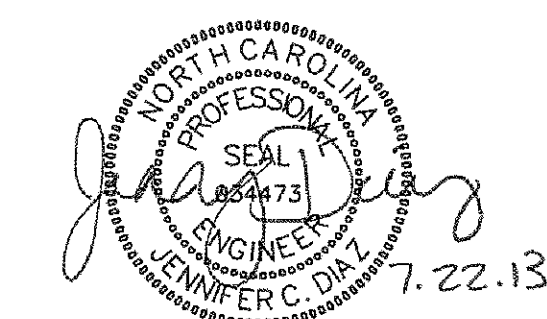
BMP #3 - SAND FILTER  
SCALE: 1" = 30'



SECTION C-C

NOTE:  
THIS DRAWING IS NOT TO SCALE. USE FOR ELEVATION INFORMATION AND DESIGN CONCEPT ONLY. FOR ACTUAL DIMENSIONS AND INSTALLATION INSTRUCTIONS SEE DETAILS PROVIDED BY MANUFACTURER (STORMTRAP).

NOTE:  
THE SAND FILTER IS BEING UTILIZED FOR WATERSHED PROTECTION.



07-SP-114-D  
HTE # 13-1076  
APPROVED by the TOWN OF CARY  
Development Review Committee

Planner: *K. H. ...* Date: *8/6/2013*

No.	Revision	Date	By
1	07-SP-114-D 1st SUBMITTAL	03/14/13	PMO
2	07-SP-114-D 2nd SUBMITTAL	05/02/13	TLM
3	PSM 1st SUBMITTAL	06/05/13	TLM
4	07-SP-114-D 3rd SUBMITTAL	06/13/13	TLM
5	TOC APPROVAL	07/22/13	TLM

Designer	PMO	Scale	AS NOTED
Drawn By	TFW	Date	03/14/13
Checked By	PMO	Job No.	2081284.30
BRADFORD WAKE COUNTY NORTH CAROLINA			

STORMWATER MANAGEMENT PLAN  
(BMP#3)

**WITHERS & RAVENEL**  
ENGINEERS | PLANNERS | SURVEYORS  
111 MacKenan Drive Cary, North Carolina 27511 tel: 919-469-3340 www.withersravenel.com License No. C-0832

Sheet No.  
**C6.2A**

K:\01\06-1280\01\284-30-01\01\13 TOC (Approved)\C6.2A.dwg - Monday, July 22, 2013, 10:22:47 AM - TEDDER, WATHLEN