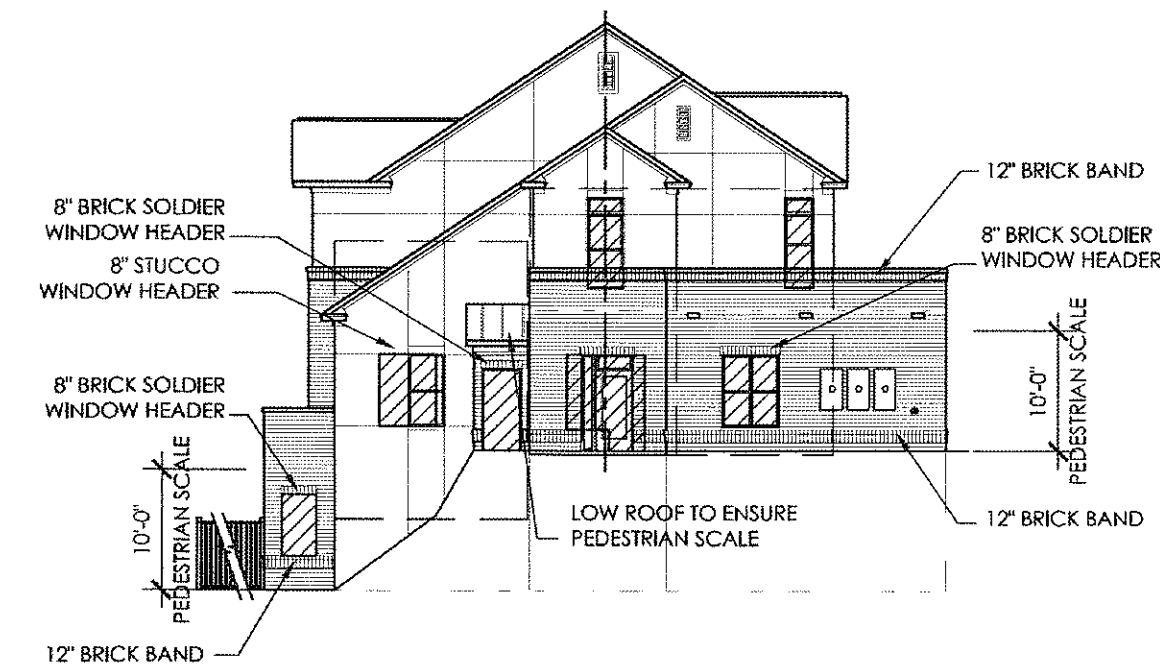
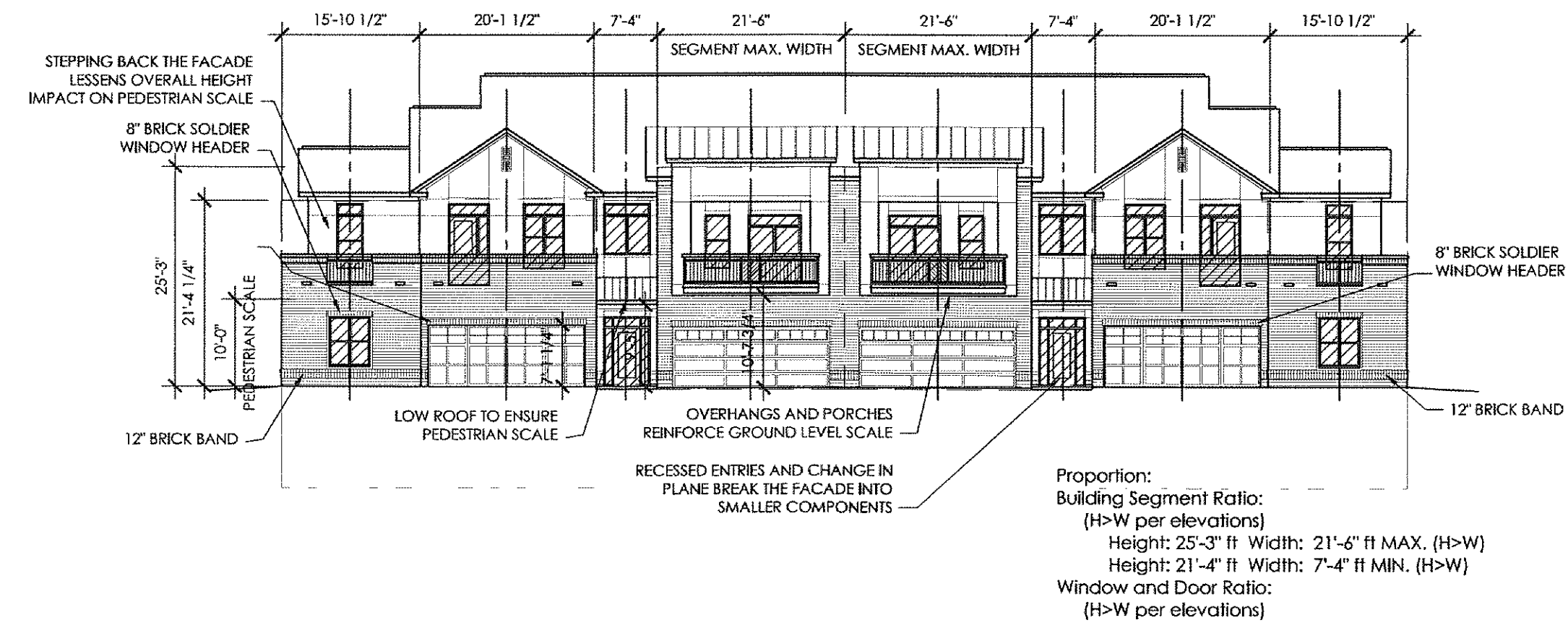
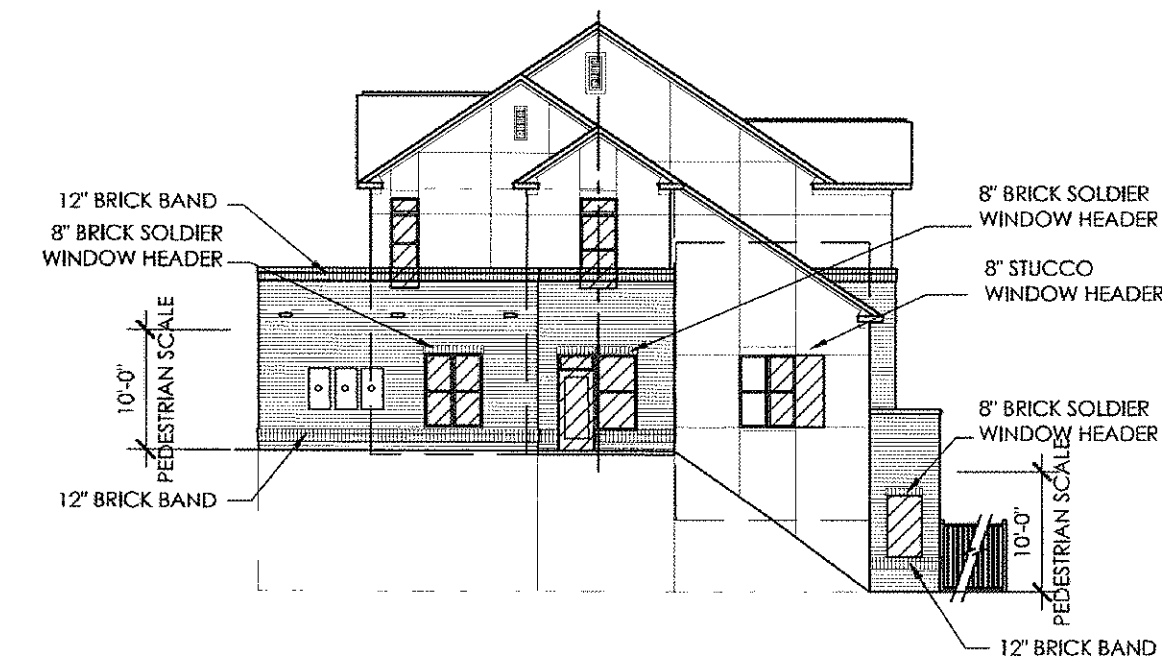
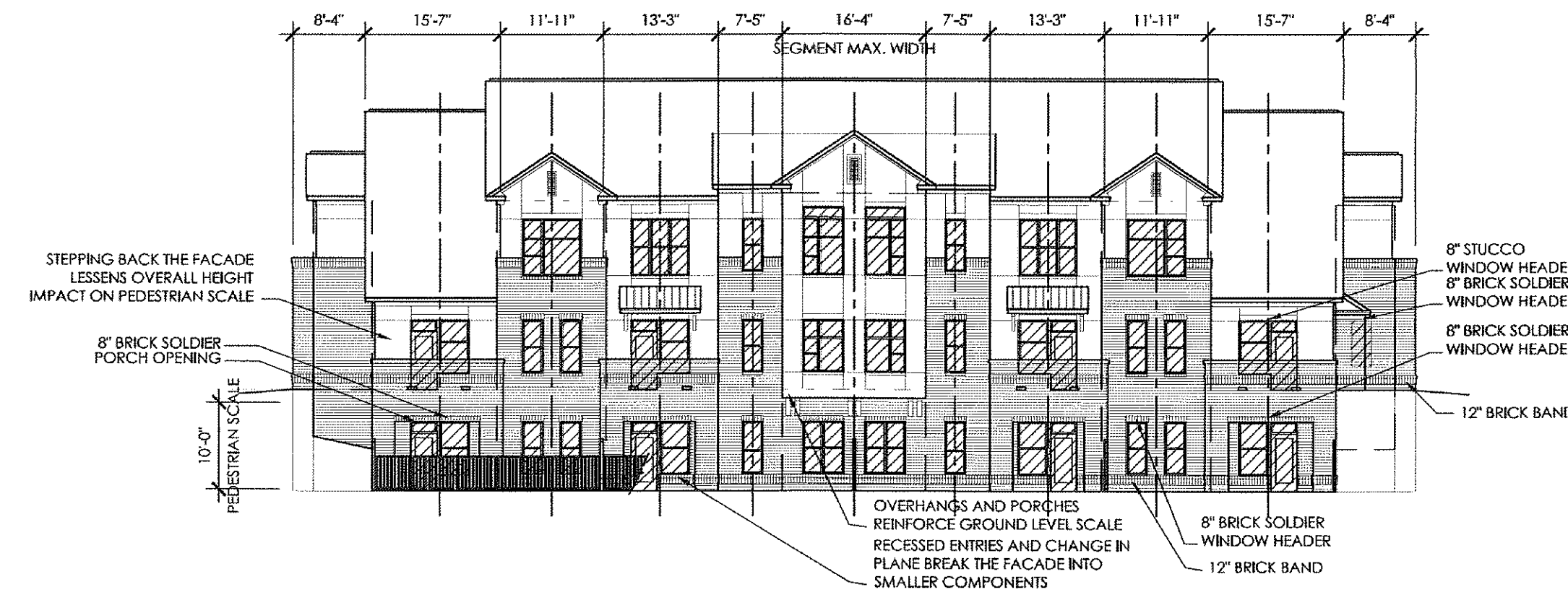


HOUSING STUDIO
 333 West Trade Street, Suite 300
 Charlotte, NC 28202
 T: 704.333.7862 F: 704.343.9380

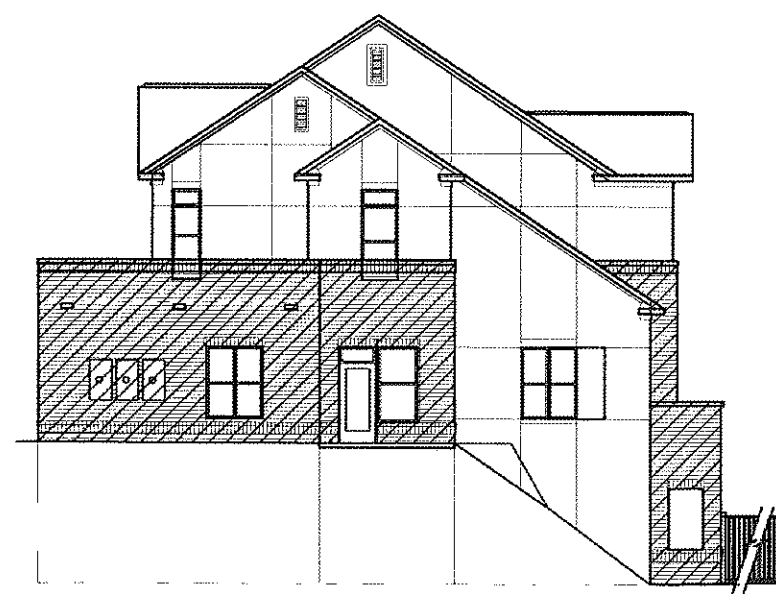


BRADFORD TOWNHOMES
 CARY, NORTH CAROLINA



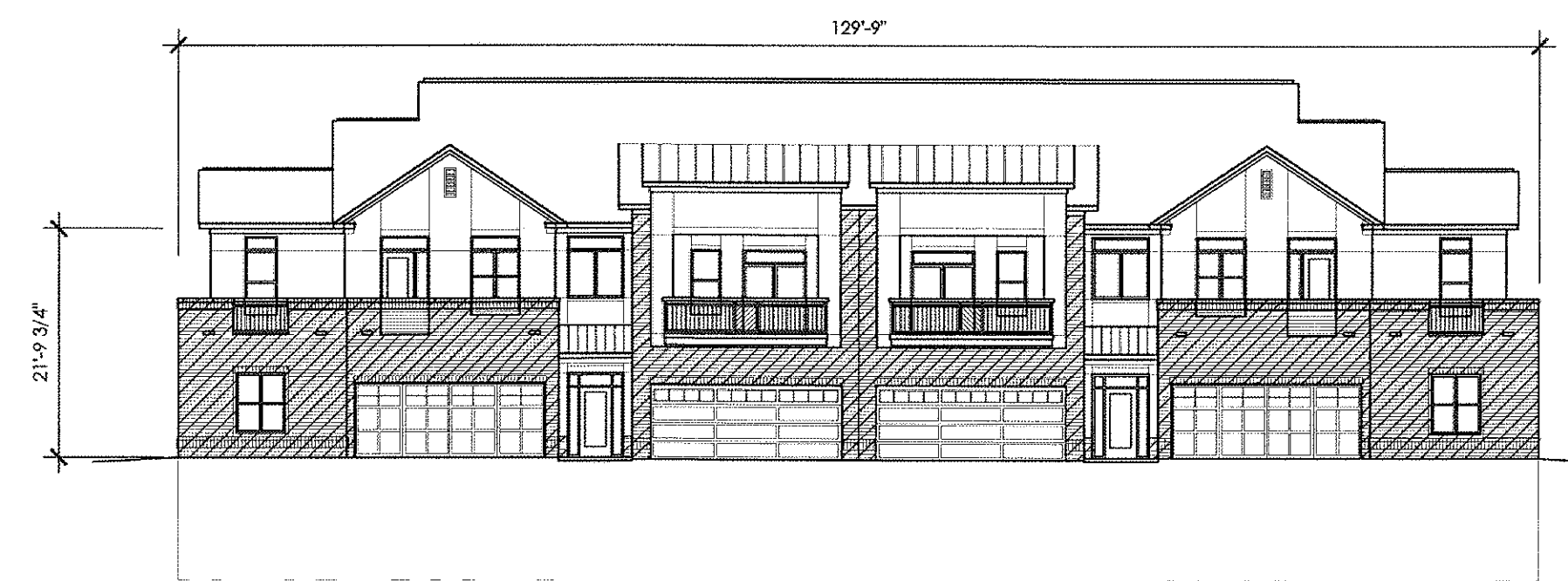
Proportion:
 Building Segment Ratio:
 (H>W per elevations)
 Height: 25'-3" ft Width: 21'-6" ft MAX. (H>W)
 Height: 21'-4" ft Width: 7'-4" ft MIN. (H>W)
 Window and Door Ratio:
 (H>W per elevations)

2 COMPOSITION SCALE AND PROPORTION OVERLAYS
 1/16" = 1'-0"



Materials:
 Total facade Area (WxH): 3836 sf
 Area of Windows and Doors: (-) 928(sf)
 Total Wall Area for Material Calcs.: 2908 sf
 Req'd masonry- Residential (x0.35): 1018 sf min.
 2334 sf provided

Materials:
 Total facade Area (WxH): 1506 sf
 Area of Windows and Doors: (-) 155.5 (sf)
 Total Wall Area for Material Calcs.: 1350.5 sf
 Req'd masonry- Residential (x0.35): 472 sf min.
 665 sf provided



Materials:
 Total facade Area (WxH): 3064 sf
 Area of Windows and Doors: (-) 1050 (sf)
 Total Wall Area for Material Calcs.: 2014 sf
 Req'd masonry- Residential (x0.35): 704 sf min.
 1159 sf provided

Color:
 Reference rendering and material boards
 for colors and A5.2 for material locations

Materials:
 Total facade Area (WxH): 1506 sf
 Area of Windows and Doors: (-) 175.5 (sf)
 Total Wall Area for Material Calcs.: 1330.5 sf
 Req'd masonry- Residential (x0.35): 465 sf min.
 685 sf provided

1 MATERIALS OVERLAY
 1/16" = 1'-0"

07-SP-114-B
 ITE #: 12-0186
 APPROVED BY TOWN OF CARY
 DEVELOPMENT REVIEW COMMITTEE

PLANNER: *WHL* DATE: *3/19/2012*

Project No: 1115
 Issue Date: OCTOBER 13 2011
 Issued For: 2nd Site Submittal

Key Plan

TOWNHOMES
 BUILDING 3- DRC
 OVERLAYS

DRC1.3