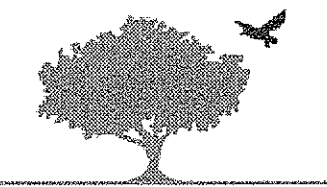


HOUSING STUDIO

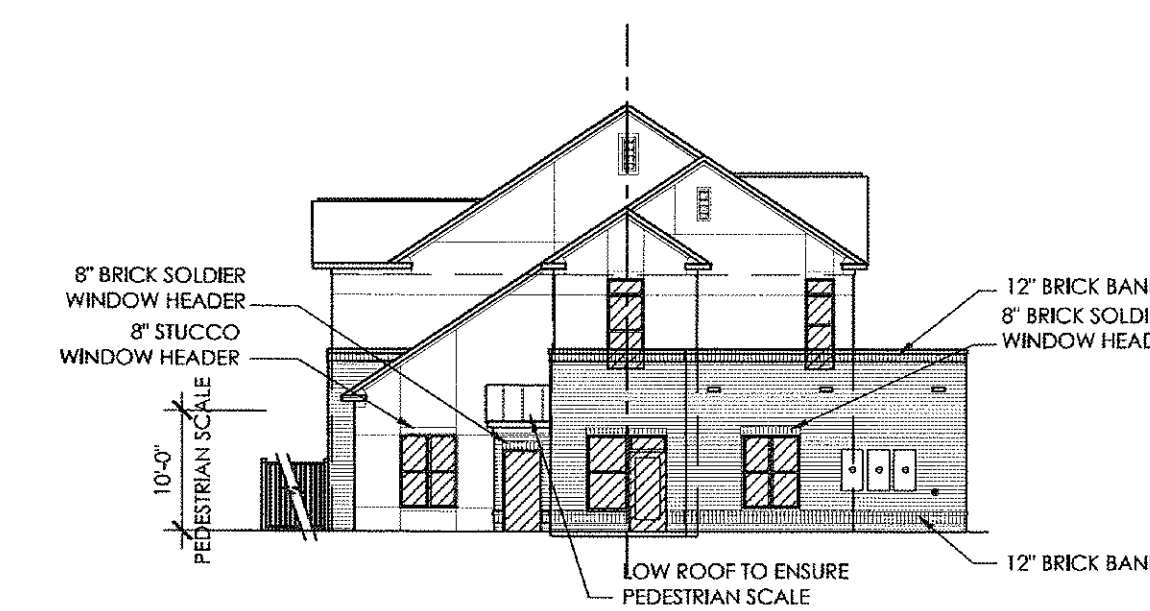
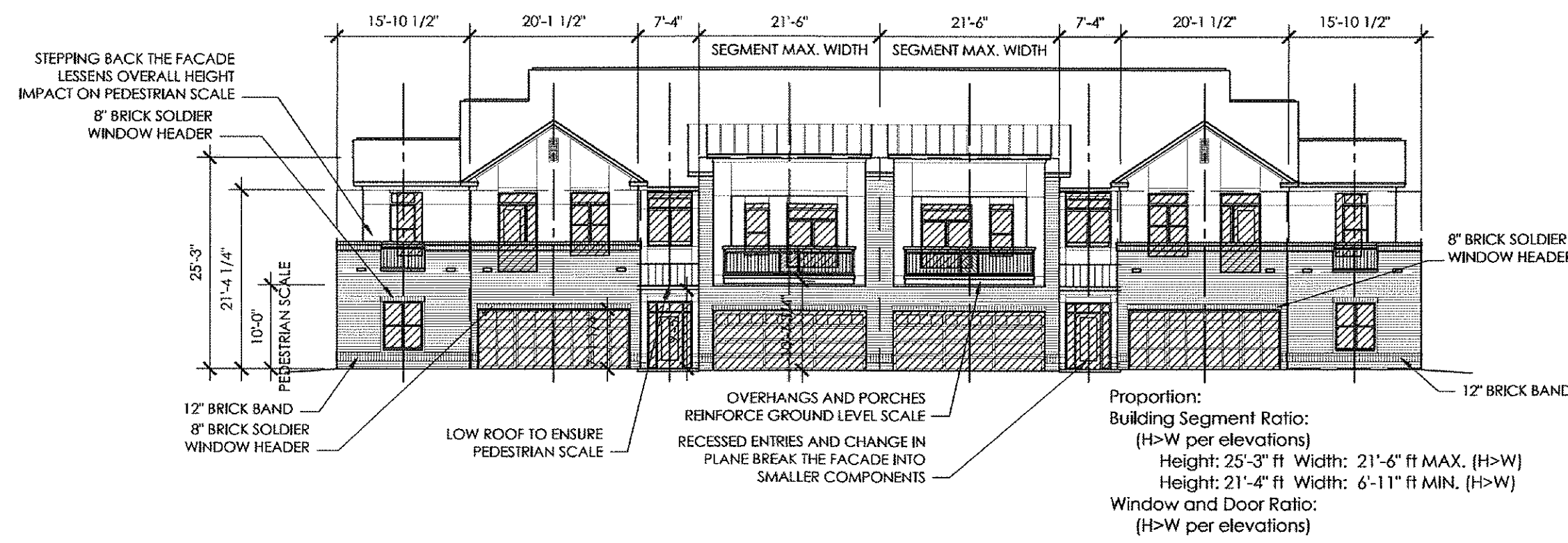
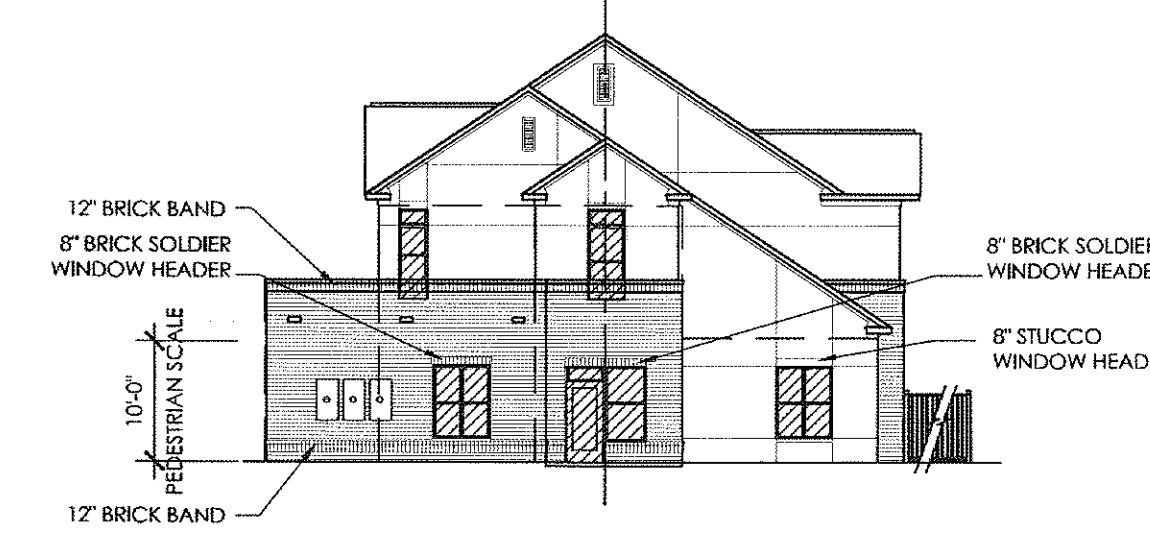
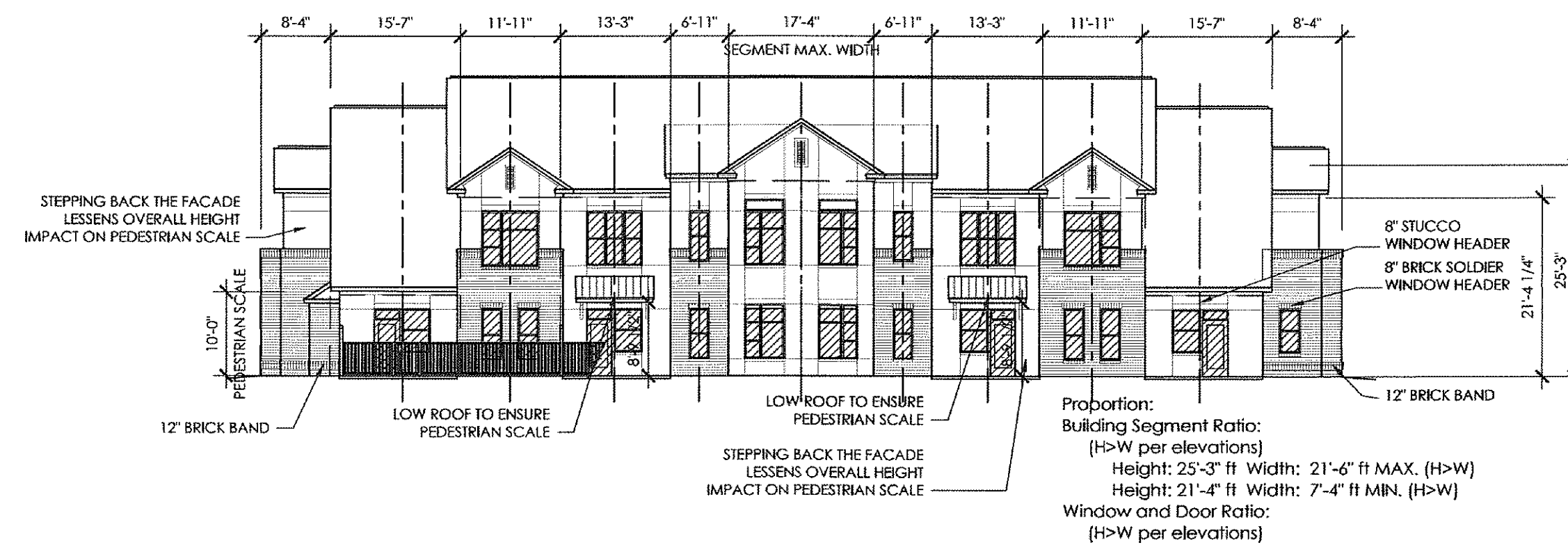
333 West Trade Street, Suite 300
Charlotte, NC 28202
T: 704.333.7862 F: 704.343.9380



BRADFORD TOWNHOMES,
CARY, NORTH CAROLINA



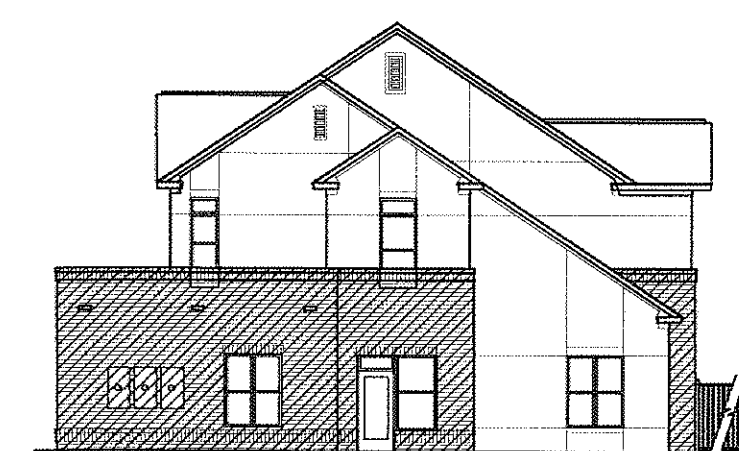
NORTHWOOD RAVIN



2 COMPOSITION SCALE AND PROPORTION OVERLAYS
1/16" = 1'-0"



Materials:
Total facade Area (WxH): 2564 sf
Area of Windows and Doors: (-) 587 (sf)
Total Wall Area for Material Calcs.: 1977 sf
Req'd masonry- Residential (x0.35): 692 sf min.
825 sf provided



Materials:
Total facade Area (WxH): 1341 sf
Area of Windows and Doors: (-) 142 (sf)
Total Wall Area for Material Calcs.: 1199 sf
Req'd masonry- Residential (x0.35): 420 sf min.
509 sf provided



Materials:
Total facade Area (WxH): 3050 sf
Area of Windows and Doors: (-) 1042 (sf)
Total Wall Area for Material Calcs.: 2008 sf
Req'd masonry- Residential (x0.35): 703 sf min.
1053 sf provided

Color:
Reference rendering and material boards for colors and A5.3 for material locations



Materials:
Total facade Area (WxH): 1341 sf
Area of Windows and Doors: (-) 162 (sf)
Total Wall Area for Material Calcs.: 1179 sf
Req'd masonry- Residential (x0.35): 413 sf min.
526 sf provided

1 MATERIALS OVERLAY
1/16" = 1'-0"

07-SP-114-B
HTE #: 12-0186
APPROVED BY TOWN OF CARY
DEVELOPMENT REVIEW COMMITTEE

PLANNER: *KWH* DATE: 3/19/2012

TOWNHOMES
BUILDING 4- DRC
OVERLAYS

DRC1.5