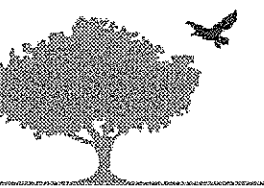


HOUSING STUDIO

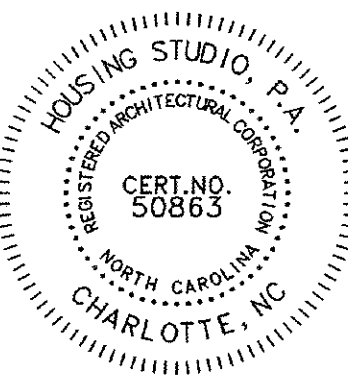
333 West Trade Street, Suite 300  
Charlotte, NC 28202  
T: 704.333.7862 F: 704.343.9380



BRADFORD TOWNHOMES,  
CARY, NORTH CAROLINA



NORTHWOOD RAVIN

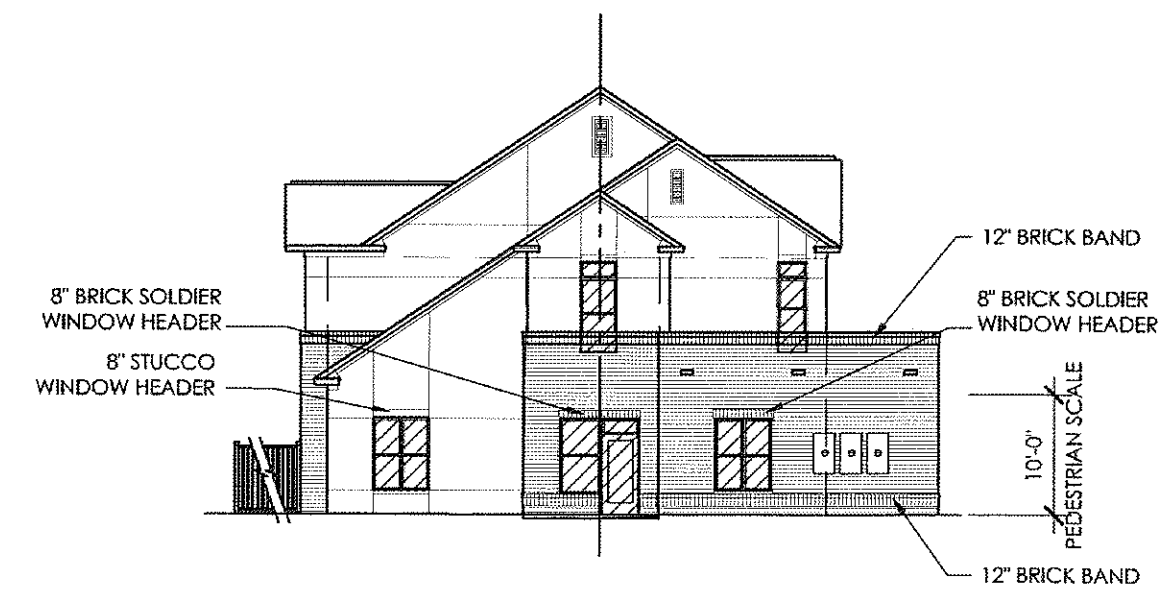
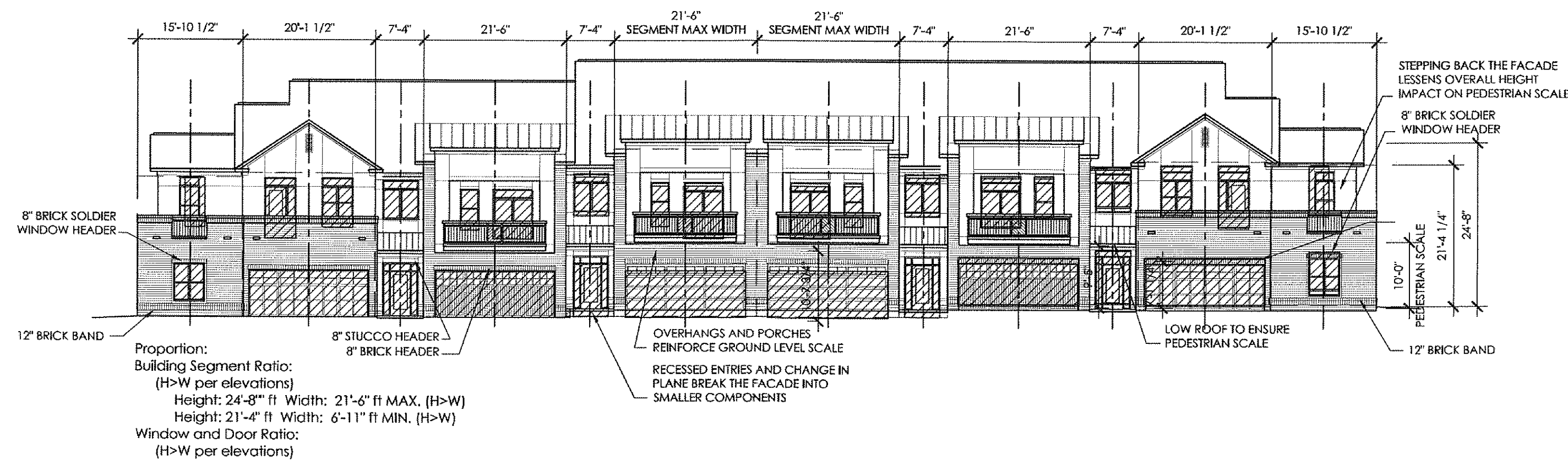
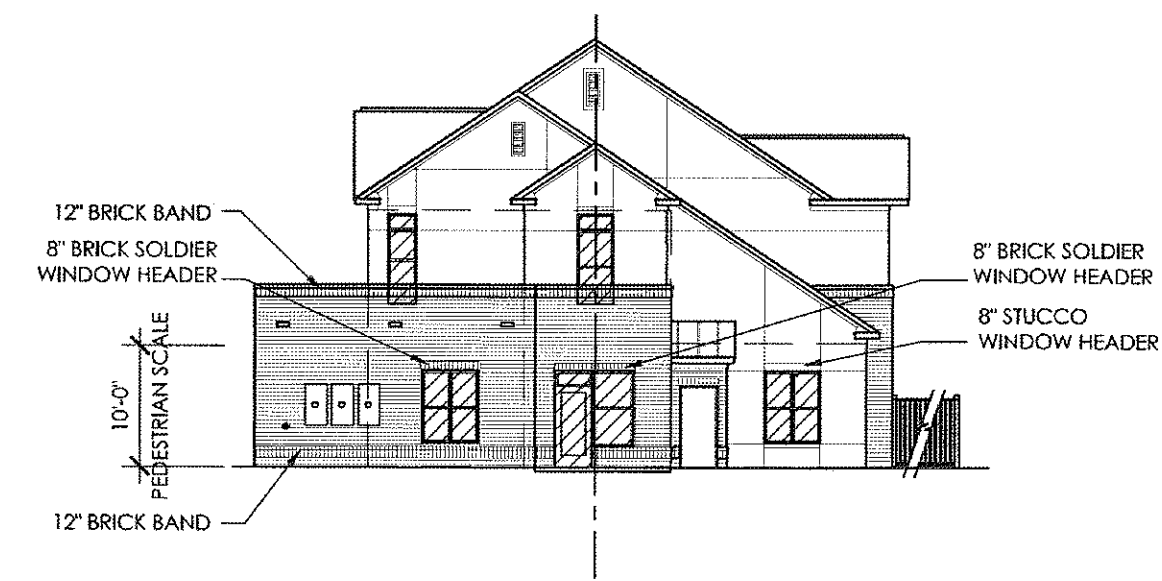
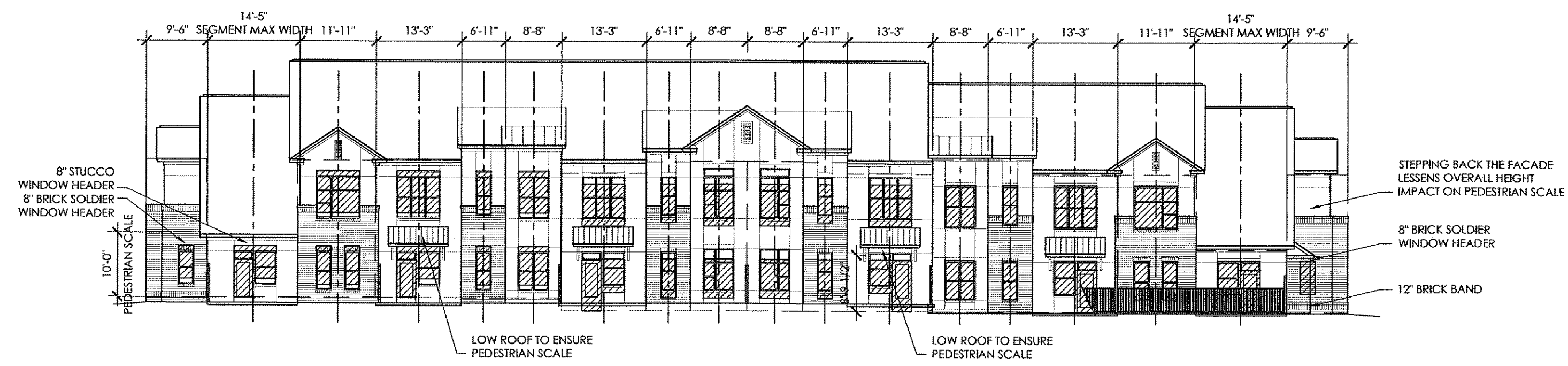


Project No: 1115  
Issue Date: OCTOBER 13 2011  
Issued For: 2nd Site Submittal

Key Plan

TOWNHOMES  
BUILDING 5- DRC  
OVERLAYS

DRC1.7



Proportion:  
Building Segment Ratio:  
(H>W per elevations)  
Height: 24'-0\"/>

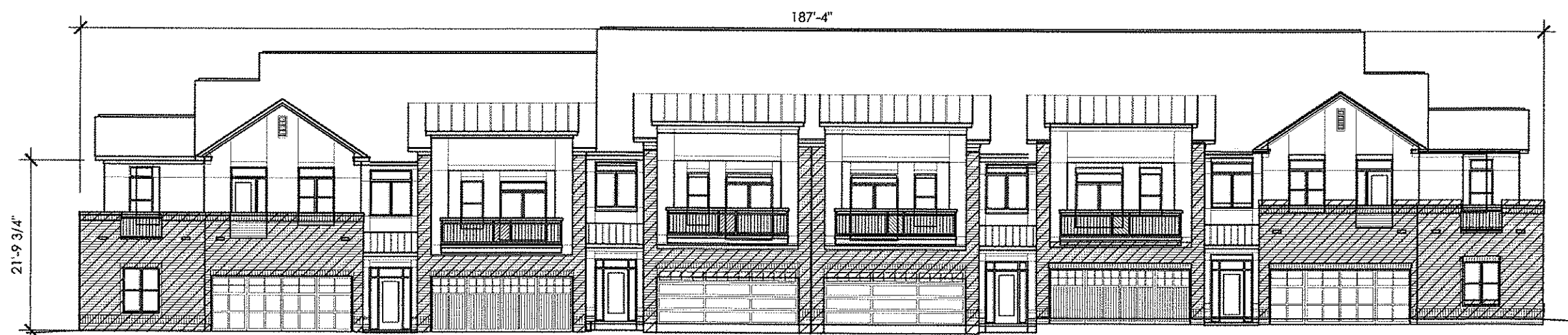
2 COMPOSITION SCALE AND PROPORTION OVERLAYS  
1/16\"/>



Materials:  
Total facade Area (WxH): 3868 sf  
Area of Windows and Doors: (-) 942 (sf)  
Total Wall Area for Material Calcs.: 2926 sf  
Req'd masonry- Residential (x0.35): 1024 sf min.  
1038 sf provided

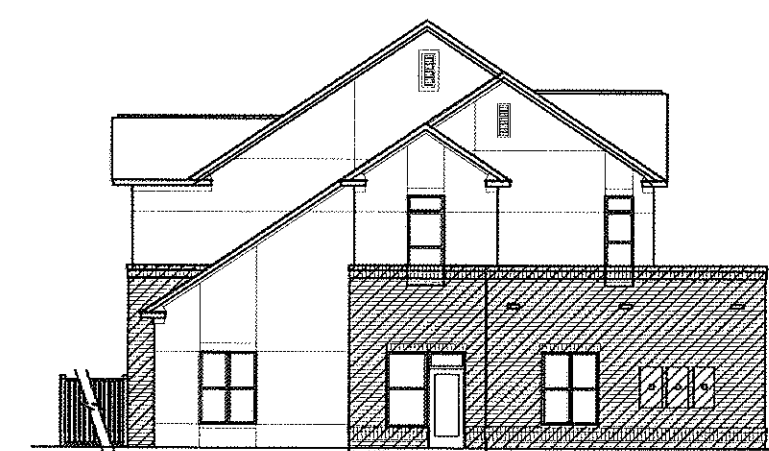


Materials:  
Total facade Area (WxH): 1341 sf  
Area of Windows and Doors: (-) 159 (sf)  
Total Wall Area for Material Calcs.: 1182 sf  
Req'd masonry- Residential (x0.35): 414 sf min.  
509 sf provided



Materials:  
Total facade Area (WxH): 4431 sf  
Area of Windows and Doors: (-) 1582 (sf)  
Total Wall Area for Material Calcs.: 2849 sf  
Req'd masonry- Residential (x0.35): 997 sf min.  
1313 sf provided

Color:  
Reference rendering and material boards  
for colors and A5.4 for material locations



Materials:  
Total facade Area (WxH): 1348 sf  
Area of Windows and Doors: (-) 142 (sf)  
Total Wall Area for Material Calcs.: 1186 sf  
Req'd masonry- Residential (x0.35): 415 sf min.  
575 sf provided

1 MATERIALS OVERLAY  
1/16\"/>

07-SP-114-B  
HTE #: 12-0186  
APPROVED BY TOWN OF CARY  
DEVELOPMENT REVIEW COMMITTEE  
PLANNER: *KWH* DATE: 3/19/2012