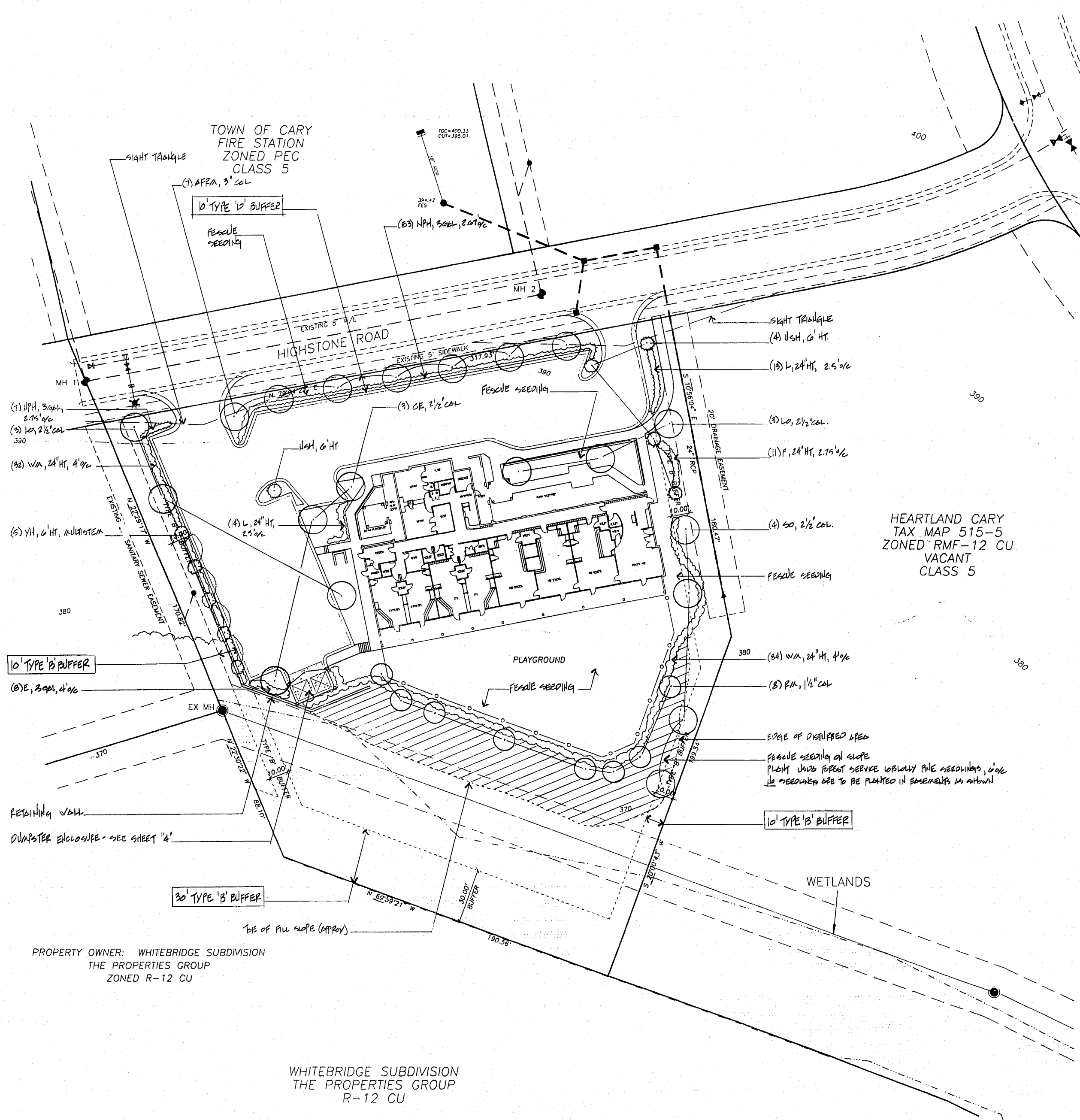


HEARTLAND CARY
TAX MAP 515-5
ZONED RMF-12 CU
UNDER CONSTRUCTION
CLASS 5



PROPERTY OWNER: WHITEBRIDGE SUBDIVISION
THE PROPERTIES GROUP
ZONED R-12 CU

WHITEBRIDGE SUBDIVISION
THE PROPERTIES GROUP
R-12 CU

HEARTLAND CARY
TAX MAP 515-5
ZONED RMF-12 CU
VACANT
CLASS 5

PLANT LIST

KEY	QTY.	COMMON NAME	BOTANICAL NAME	SIZE
LO	6	Laurel Oak	Quercus laurifolia	2.5" CAL
AFRM	7	Autumn Flame Red Maple	Acer rubrum 'Autumn Flame'	3" CAL
SO	4	Shumard Oak	Quercus shumardii	2.5" CAL
RM	8	Red Maple	Acer rubrum	1.5" CAL
CE	3	Chinese Elm	Ulmus parvifolia	2.5" CAL
YH	5	Yaupon Holly	Ilex vomitoria	6' HT
NSH	5	Nellie Stevens Holly	Ilex x 'Nellie R. Stevens'	6' HT
L	27	Ligustrum	Ligustrum japonica	24" HT
F	11	Forsythia	Forsythia intermedia 'Lynwood Gold'	24" HT
NPH	90	Needlepoint Holly	Ilex cornuta 'Needlepoint'	3 GAL
WM	116	Wax Myrtle	Myrica cerifera	24" HT
E	8	Eleagnus	Eleagnus pungens	3 GAL

NOTES

- CONTACT ALL UTILITY COMPANIES TO LOCATE UNDERGROUND UTILITIES PRIOR TO CONSTRUCTION.
- COMPLY WITH SIZING AND GRADING STANDARDS OF THE LATEST EDITION OF "AMERICAN STANDARD FOR NURSERY STOCK".
- ROOT BALLS WILL COMPLY WITH AAN STANDARDS. ONLY NATURAL FIBER BURLAP WILL BE ACCEPTABLE FOR WRAPPING.
- ROOTS OF CONTAINER-GROWN STOCK MUST BE SO ESTABLISHED AS TO HOLD THE SOIL FIRMLY, BUT NOT BE ROOT-BOUND.
- ALL DISTURBED AREAS SHALL BE STABILIZED WITH MULCH OR VEGETATIVE COVER.
- NO PLANTS MAY BE SUBSTITUTED WITHOUT CONSENT OF THE OWNER OR LANDSCAPE ARCHITECT.
- POORLY DRAINED AREAS MUST BE REPORTED TO THE OWNER OR LANDSCAPE ARCHITECT. WORK IN THESE AREAS MUST STOP UNTIL IMPROVEMENTS CAN BE DETERMINED AND APPROVED BY OWNER.
- TYPICAL PLANTING BACKFILL SHALL CONSIST OF 1 PART COMPOSTED PINE BARK TO 5 PARTS EXISTING SOIL. USE "AGRIFORM", 20-10-5 FORMULATION AT MANUFACTURERS' RATE.
- STAKING AND GUYING SHALL REMAIN IN PLACE FOR ONE GROWING SEASON.
- ALL PLANTINGS SHALL MEET THE MINIMUM REQUIREMENTS OF THE CARY LANDSCAPE ORDINANCE.



STEPHEN PEASE
Landscape Architectural Services
1808 Phelps West Road
Fuquay-Varina, NC 27826
(919) 562-7673

Revisions			
No.	Description	Date	By
1	ADD TREE PLANTING	1/25/15	

BRIGHT HORIZONS CHILDREN'S CENTER

LANDSCAPE PLAN

Designer	Scale	1"=30'
Drawn By	Date	1/25/15
Checked By	Job No.	24136

CAD File	24136\SH13
Sheet No.	3