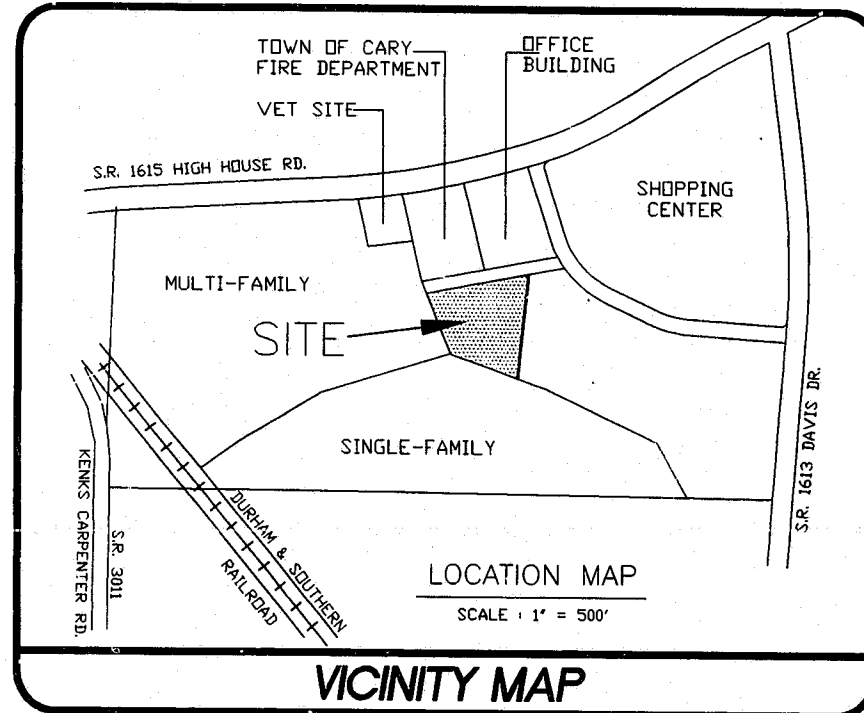


# SITE IMPROVEMENTS FOR BRIGHT HORIZONS FAMILY SOLUTIONS

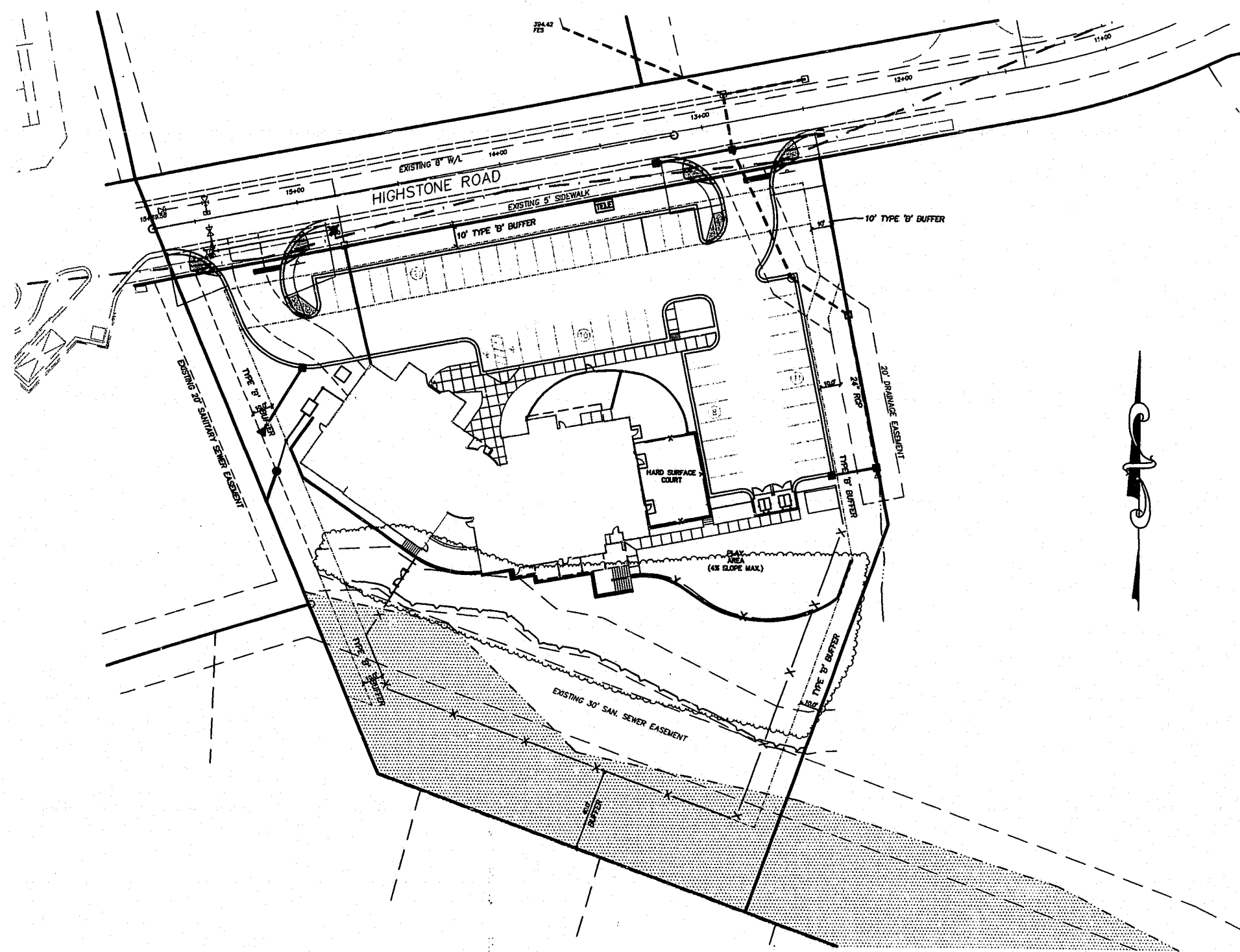
• CORNERSTONE  
CARY, NORTH CAROLINA

APPROVED  
DATE: \_\_\_\_\_  
BY: \_\_\_\_\_  
TOWN OF CARY  
ENGINEERING DEPT.



**INDEX OF SHEETS**

|  |       |
|--|-------|
| SITE PLAN  | SHT 1 |
| GRADING, STORM DRAINAGE, EROSION<br>EROSION AND UTILITY PLAN | SHT 2 |
| PLANTING PLAN  | SHT 3 |
| LIGHTING PLAN  | SHT 4 |
| SITE DETAILS & NOTES   | SHT 5 |
| UTILITY DETAILS  | SHT 6 |
| FLOOR PLAN   | A1    |
| EXTERIOR ELEVATIONS  | A2    |



**LEGEND**

| DESCRIPTION               | EXISTING  | PROPOSED  |
|---------------------------|-----------|-----------|
| 2' CONTOUR INTERVAL       | -----     | -----     |
| 10' CONTOUR INTERVAL      | - - - - - | - - - - - |
| PROPERTY LINE             | -----     | -----     |
| ROADWAY CENTERLINE        | -----     | -----     |
| RIGHT OF WAY LIMITS       | -----     | -----     |
| EASEMENT LINE             | -----     | -----     |
| CURB & GUTTER             | =====     | =====     |
| SANITARY SEWER FACILITIES | —S—       | —S—       |
| STORM SEWER FACILITIES    | —□—       | —□—       |
| WATERLINE                 | —*—       | —*—       |
| FIRE HYDRANT ASSEMBLY     | —H—       | —H—       |
| FENCING STRUCTURE         | —○—       | —○—       |
| WOODSLINE                 | —~—       | —~—       |
| WATERWAYS                 | —~—       | —~—       |
| SILT FENCING              | —x—       | —x—       |

**OWNER**

**BRIGHT HORIZONS**  
12105 BLUEJAY TERRACE  
ALPHARETTA, GA. 30004  
ATTN: JONATHAN DOTSON  
PROJECT MANAGER  
PHONE: (770)663-4376

**ARCHITECT**

**WINSTEAD WILKINSON ARCHITECTS, PLLC**  
600 WADE AVENUE, SUITE 6100  
RALEIGH, N.C. 27605  
ATTN: ERICH WILKINSON, AIA  
PHONE: 919-832-2878  
FAX: 919-832-7901

**LANDSCAPE ARCHITECT**

**OBS LANDSCAPE ARCHITECTS**  
306/200 PARHAM STREET  
RALEIGH, N.C. 27601  
PHONE: 919-755-0046  
FAX: 919-755-0030

00-SP-044  
**APPROVED**  
DATE: 9/15/00 JG  
BY: [Signature] 9/15/00  
TOWN OF CARY  
DEVELOPMENT REVIEW GROUP

TOWN OF CARY  
ENGINEERING DEPT.  
REVIEWED BY: Jamie Reels for Streets/Hts  
DATE: 10-4-00

**PREPARED BY:**

**WITHERS & RAVENEL  
ENGINEERING & SURVEYING, INC.**

111 MacKENAN DRIVE  
CARY, NORTH CAROLINA 27511  
TELEPHONE: OFFICE (919) 480-8848  
FAX No. (919) 487-8888

**BID SET  
7/7/00**