

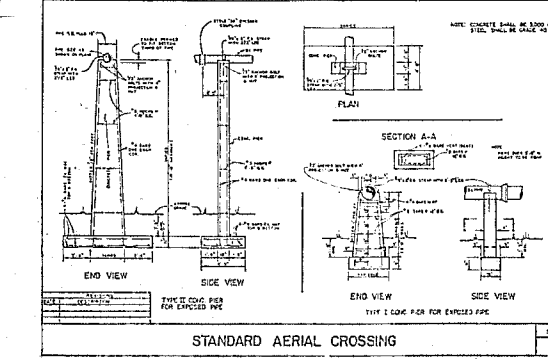
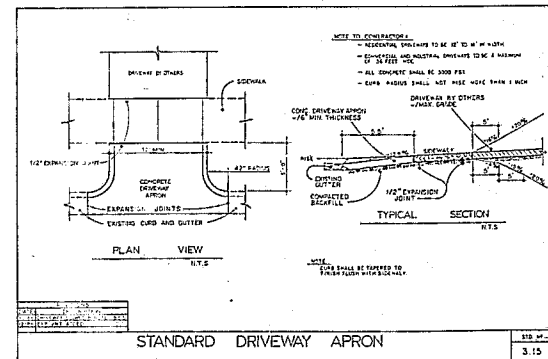
PERMANENT EROSION CONTROL

Minimum 5' x 5' concrete curb, 12" high, 12" wide

Item	Description	Quantity	Unit
Aug 1-1-1	12" x 12" x 12" Precast Concrete	100	sq. yds.
Aug 1-1-2	12" x 12" x 12" Precast Concrete	100	sq. yds.
Aug 1-1-3	12" x 12" x 12" Precast Concrete	100	sq. yds.
Aug 1-1-4	12" x 12" x 12" Precast Concrete	100	sq. yds.
Aug 1-1-5	12" x 12" x 12" Precast Concrete	100	sq. yds.
Aug 1-1-6	12" x 12" x 12" Precast Concrete	100	sq. yds.
Aug 1-1-7	12" x 12" x 12" Precast Concrete	100	sq. yds.
Aug 1-1-8	12" x 12" x 12" Precast Concrete	100	sq. yds.
Aug 1-1-9	12" x 12" x 12" Precast Concrete	100	sq. yds.
Aug 1-1-10	12" x 12" x 12" Precast Concrete	100	sq. yds.
Aug 1-1-11	12" x 12" x 12" Precast Concrete	100	sq. yds.
Aug 1-1-12	12" x 12" x 12" Precast Concrete	100	sq. yds.
Aug 1-1-13	12" x 12" x 12" Precast Concrete	100	sq. yds.
Aug 1-1-14	12" x 12" x 12" Precast Concrete	100	sq. yds.
Aug 1-1-15	12" x 12" x 12" Precast Concrete	100	sq. yds.
Aug 1-1-16	12" x 12" x 12" Precast Concrete	100	sq. yds.
Aug 1-1-17	12" x 12" x 12" Precast Concrete	100	sq. yds.
Aug 1-1-18	12" x 12" x 12" Precast Concrete	100	sq. yds.
Aug 1-1-19	12" x 12" x 12" Precast Concrete	100	sq. yds.
Aug 1-1-20	12" x 12" x 12" Precast Concrete	100	sq. yds.

Consult Construction Engineer or Soil Conservation Service for additional information concerning other alternatives for protection of denuded areas. The use of vegetation plant are those which do well under local conditions after seeding and conditions are favorable. Use a 2000 quantity table, double or triple sizes.

* Erosion - based according to optimum system for desired permanent vegetation. Do not allow temporary cover to grow over 12" in height before mowing, otherwise erosion may be induced.



HUGH J. GILLECE & ASSOC.
 875 WALNUT STREET SUITE 125
 CARY N.C. 27511
 (919) 469-1101

TOWN OF CARY
 STANDARD DETAILS

Project Revisions

- CONSTRUCTION SPECIFICATIONS**
- Obtain Grading Permit.
 - Install all erosion control measures as shown.
 - Obtain Certificate of Compliance through onsite inspection by Town Erosion Control Engineer.
 - Proceed with grading.
 - Clean sediment basins when half full.
 - Seed and mulch denuded area within 10 days after finished ground is established.
 - Maintain all erosion control measures until permanent ground cover is established.
 - Obtain final approval by Town Erosion Control Engineer.
 - Remove all erosion control measures and stabilize these areas.

Sheet D2 OF