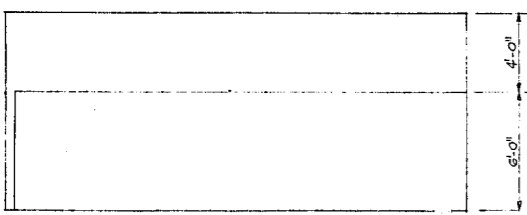


FLOOR PLAN
SCALE: 1/4" = 1'-0"

ROOM FINISH SCHEDULE						
ROOM NO.	FLOOR	BASE	WALLS	CEILING	CEILING HEIGHT	REMARKS
101 THRU 103	VINYL ASBESTOS TILE	VINYL	GWB & CMU PAINTED	2 x 4 LAY-IN	10'-0"	
104 THRU 106	CONCRETE	NONE	GWB & CMU PAINTED	EXPOSED JOISTS PAINTED BLACK		
107 & 108	VINYL ASBESTOS TILE	VINYL	GWB & CMU PAINTED	2 x 4 LAY-IN	8'-0"	
109	VINYL ASBESTOS TILE	VINYL	GWB PAINTED	2 x 4 LAY-IN	8'-0"	
110	CONCRETE	NONE				

DOOR SCHEDULE					
DOOR			FRAME	REMARKS	
NO.	TYPE	SIZE	MAT'L	MAT'L	
1 THRU 3		(2) 5'-0" x 7'-0" x 1 3/4"	ANODIZED ALUMINUM	ANODIZED ALUMINUM	GLASS TRANSOM ABOVE
4 & 5		5'-0" x 7'-0" x 1 3/4"	H.M. PAINTED	H.M. PAINTED	
6 THRU 8		3'-0" x 7'-0" x 1 3/4"	H.C. WOOD PAINTED	WOOD PAINTED	
9 THRU 11		2'-8" x 7'-0" x 1 3/4"	H.C. WOOD PAINTED	WOOD PAINTED	

WINDOWS
ALL WINDOWS ARE 5'-0" WIDE X 7'-4" HIGH ALUM. FIXED, BRONZE FINISH WITH 1" INSULATED GLASS.



ELEVATION ①
SCALE: 1/4" = 1'-0"

LEGEND & ABBREVIATIONS

- DRYWALL PARTIONS
- W/GWB
- CMU
- BRICK
- INSULATION
- GWB — GYPSUM WALL BOARD
- CMU — CONCRETE MASONRY UNITS
- H.M. — HOLLOW METAL
- H.C. — HOLLOW CORE

INTERNATIONAL ENGINEERING SERVICES, Inc.
1904 Fawcetta Drive
Raleigh, North Carolina 27612



BLUCK JONES PLAZA
CARY, NORTH CAROLINA

SCALE: AS SHOWN APPROVED BY: DATE: JULY 8, 1984 DRAWN BY:

FLOOR PLAN AND SCHEDULES

OWNER: HSU ASSOCIATES, INC. DRAWING NUMBER: 3 OF 9 SHTS.