

CONSTRUCTION SEQUENCE

- 1 CLEAR & GRUB SITE
- 2 ERECT TEMPORARY SEDIMENT & EROSION CONTROL DEVICES
- 3 BEGIN GRADING
- 4 INSTALL STORM STRUCTURES
- 5 PROTECT STORM STRUCTURES AS DETAILED
- 6 INSTALL 20" WIDE, 6" DEEP, 50' LONG CONCRETE CONSTRUCTION ENTRANCE APRONS AT ALL CONSTRUCTION ENTRANCES

SECTION 202 - EROSION AND SEDIMENT CONTROL

GENERAL
 Description of Work: The nature of erosion and sediment control work is to prevent erosion and sediment from leaving the site during construction. It is not necessarily stated in the following.
 Bill Requirements: Erosion and sediment control measures shall be installed and maintained in accordance with the following:
 1. Erosion and sediment control measures shall be installed and maintained in accordance with the following:
 2. Erosion and sediment control measures shall be installed and maintained in accordance with the following:
 3. Erosion and sediment control measures shall be installed and maintained in accordance with the following:
 4. Erosion and sediment control measures shall be installed and maintained in accordance with the following:
 5. Erosion and sediment control measures shall be installed and maintained in accordance with the following:
 6. Erosion and sediment control measures shall be installed and maintained in accordance with the following:
 7. Erosion and sediment control measures shall be installed and maintained in accordance with the following:
 8. Erosion and sediment control measures shall be installed and maintained in accordance with the following:
 9. Erosion and sediment control measures shall be installed and maintained in accordance with the following:
 10. Erosion and sediment control measures shall be installed and maintained in accordance with the following:
 11. Erosion and sediment control measures shall be installed and maintained in accordance with the following:
 12. Erosion and sediment control measures shall be installed and maintained in accordance with the following:

**TABLE A
 LIST OF DRAINAGE INLET TYPES**

STRUC. NO.	STRUC. TYPE
1.	NEENAH R-3410-1
2.	DEWEY BROS. CH-BU-13
3.	DEWEY BROS. CH-SO-1
4.	DEWEY BROS. CH-RN-7A
5.	NEENAH R-3410-1
6.	NEENAH R-3410-1
7.	NEENAH R-3410-1
8.	DEWEY BROS. CH-SO-1
9.	DEWEY BROS. CH-RN-13
10.	NEENAH R-3410-1
11.	NEENAH R-3410-1
12.	DEWEY BROS. CH-BU-13

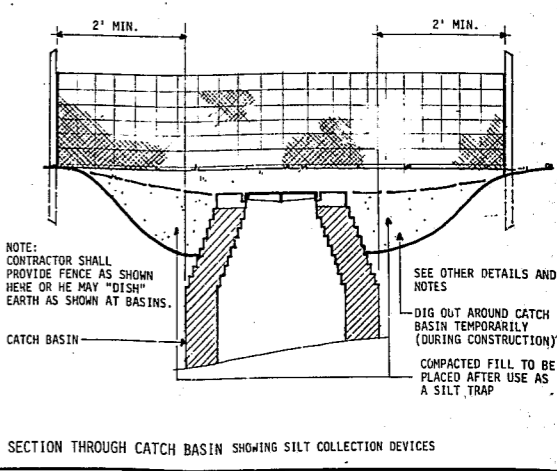
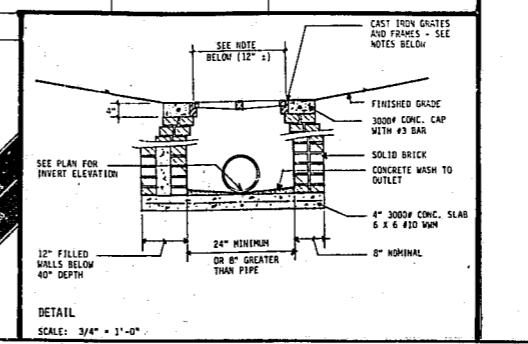
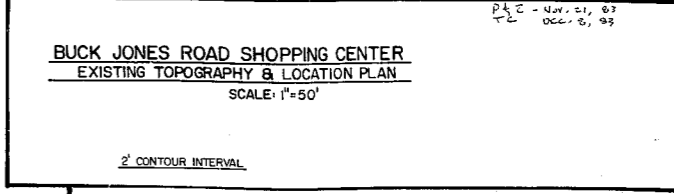
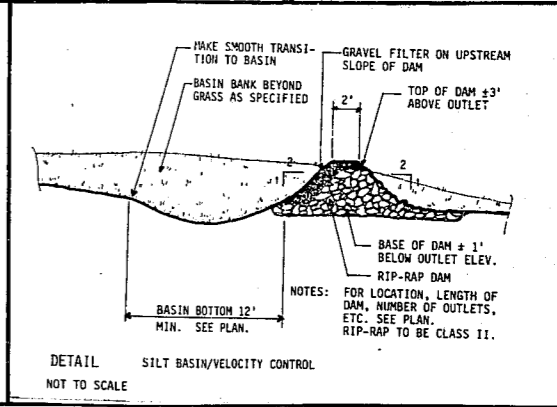
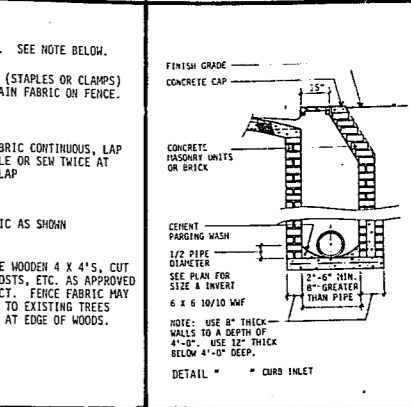
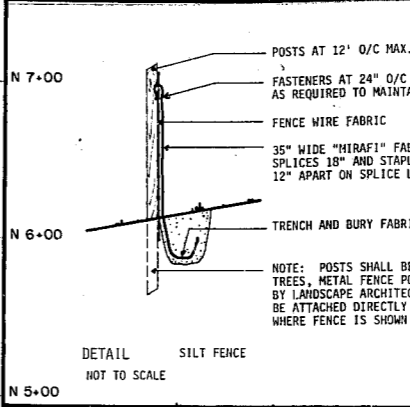
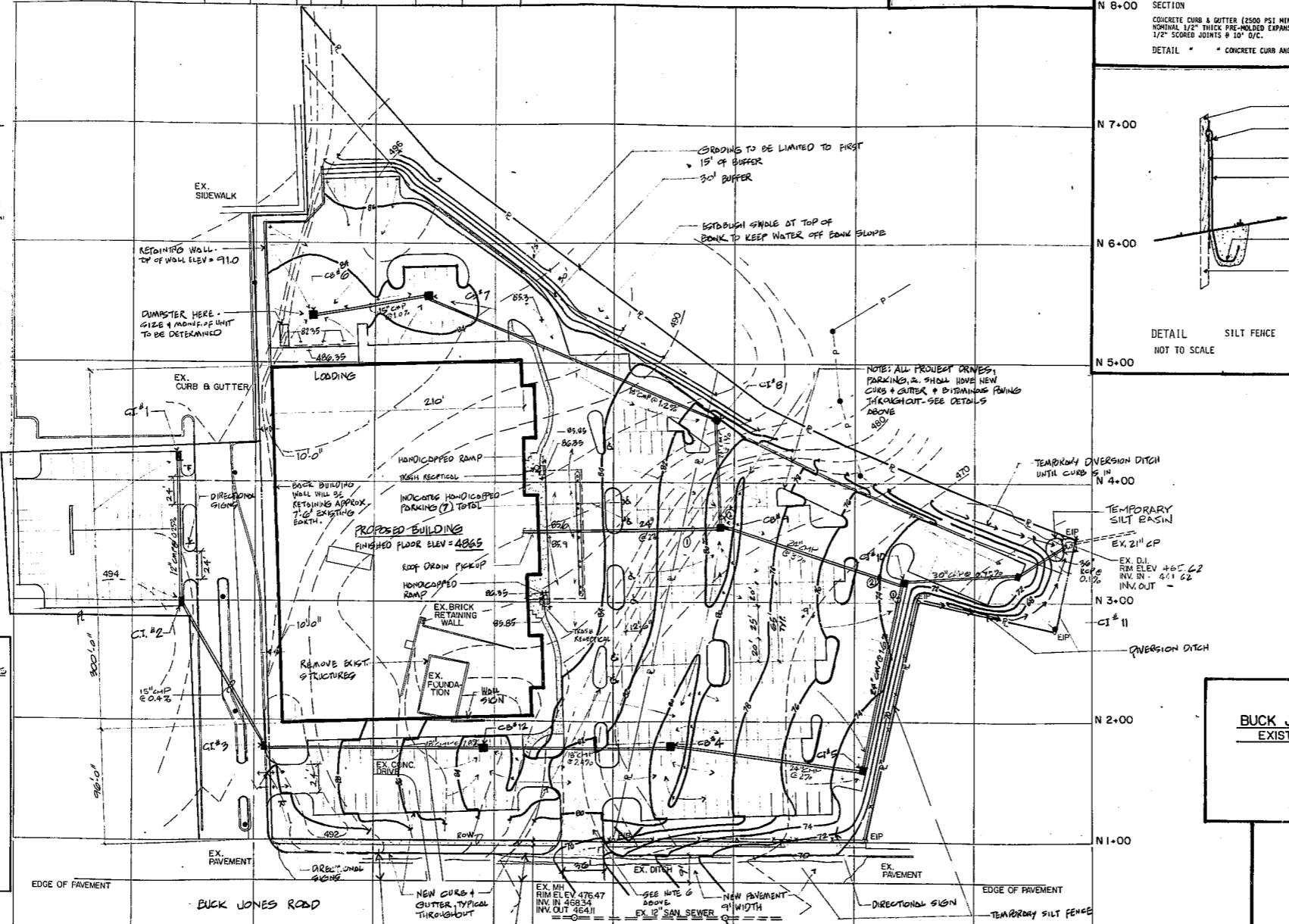
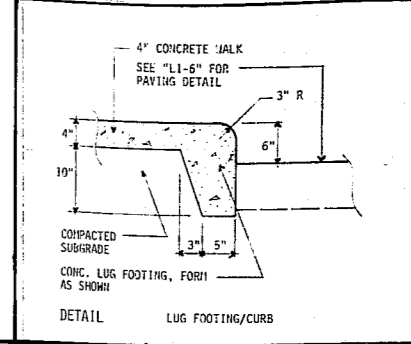
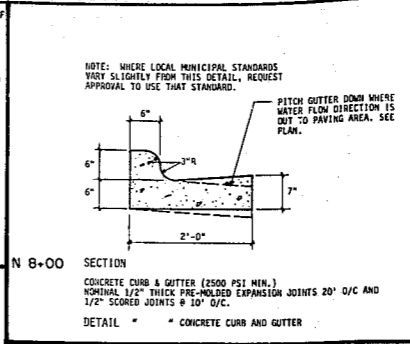
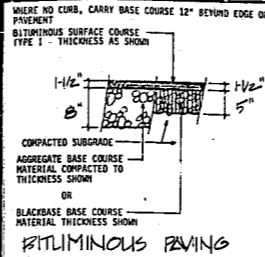
* NEENAH FOUNDRY COMPANY
 NEENAH, WISCONSIN
 ** DEWEY BROTHERS, INC.
 GOLDSBORO, N.C.

(SEE TABLE A, THIS SHEET, FOR INLET TYPES)

LEGEND OF STORM STRUCTURES			LAND USE BREAKDOWN		
Struc. No.	Inlet Elev.	Inv. In	Struc. No.	Inlet Elev.	Inv. In
1	± 490	verify	7	483.90	477.10
2	± 492	verify	8	480.75	473.90
3	± 490	verify	9	479.75	472.50
4	479.75	477.36	10	473.90	465.33
5	473.90	470.9	11	471.0	461.72
6	482.25	—	12	483.50	480.96

LAND USE BREAKDOWN

GROSS LAND AREA	= 307,359 SF (7.056 ac)
REQUIRED LANDSCAPE AREA	= 52,104 SF
LANDSCAPE AREA SHOWN	= 57,326 SF
GROSS BUILDING AREA	= 64,250 SF
REQUIRED PARKING	= 321 SPACES
LESS REQUIRED TREE SPACES	= -16 SPACES
NET REQUIRED PARKING	= 305 SPACES
ACTUAL PARKING SHOWN	= 317 SPACES
ACTUAL TREES SHOWN	= 58 TREES
APPROX. DENuded AREA	= ± 6.0 ACRES



PETRSON & WHITMAN
 INCORPORATED
 CONSULTING ENGINEERS
 RALEIGH, N. C.

 G. L. WILSON BUILDING COMPANY
 STATESVILLE, N.C.
 DESCRIPTION:
 BUCK JONES ROAD SHOPPING CENTER
 SITE DEVELOPMENT PLAN SHOWING
 GRADING
 DATE: OCT., 1983
 DRAWN BY: SDB
 CHECKED BY:
 REVISIONS

NO.	DATE

 SCALES
 HORIZ.: AS SHOWN
 VERT.: SHOWN
 PROJ. NO. DTV. 0566 A-1
 SHEET NO. 2 OF 5
 DRAWING NO.