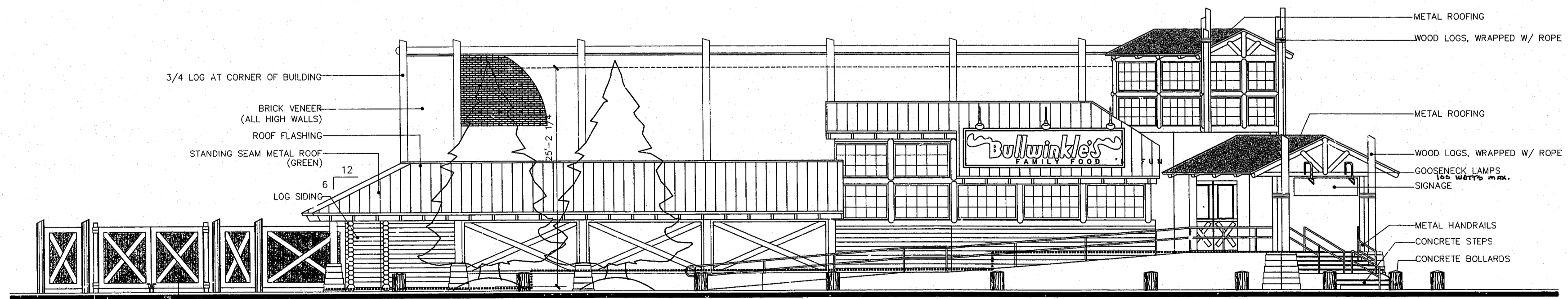


1
A7
FRONT ELEVATION
3/16"=1'-0"



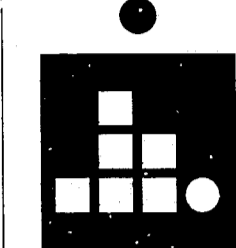
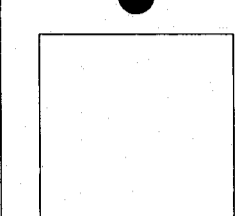
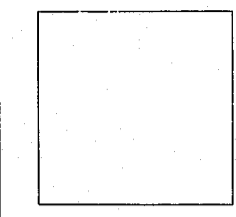
2
A7
LEFT SIDE ELEVATION
3/16"=1'-0"

Bullwinkle's Exterior Materials & Colors:

- | | |
|--------------------------------|---|
| Corrugated metal roofing | Dark Green |
| Wood logs or lumber | Light Brown |
| Field stone | Dark Grey (on pylons) |
| Stacked field stone | Light Grey (with lines) |
| Painted plywood | Light Grey (on walls) |
| Coventry ironspot brick veneer | Burnt Orange (Buck Jones Village Brick) |
| Split face block | Buff (Light Beige) |
| Muntins & mullions | Dark Green (on windows) |
| Railing & gooseneck lights | Dark Green |

98-54-102 (Rev.)
APPROVED
MAY 5-11-99
TM 5-11-99

* SIGNAGE IS A SEPARATE APPROVAL & HAS NOT BE APPROVED AS A PART OF THIS PLAN.



Mozingo + Wallace
ARCHITECTS, L.L.P.
architecture • interiors • construction management
618 chesnut road, suite 205
myrtle beach, s.c. 29572
phone 803-449-2000
fax 803-449-1113

ALL DRAWINGS AND WRITTEN MATERIAL APPEARING HEREIN CONSTITUTE THE ORIGINAL AND UNPUBLISHED WORK OF THE ARCHITECTS AND THIS SAME MAY NOT BE DUPLICATED, USED OR REPRODUCED WITHOUT THE WRITTEN CONSENT OF THE ARCHITECTS.

BULLWINKLE'S FAMILY FOOD 'N FUN
RESTAURANT
CARY, NORTH CAROLINA

sheet title
EXTERIORS
date MAY 5, 1999

revision	date

sheet no.
A 7
of 28