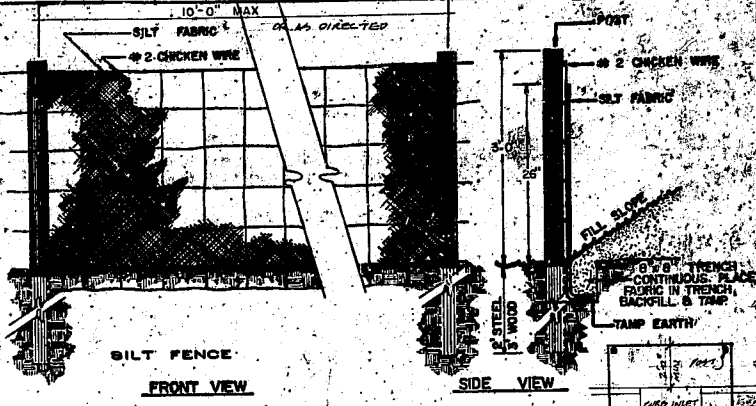
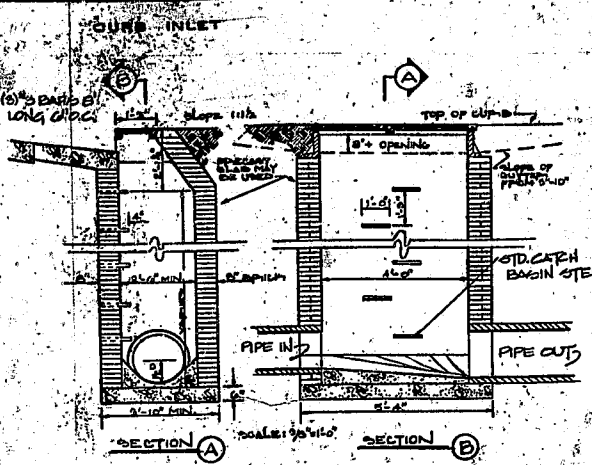


EROSION CONTROL NOTES

- NOTES:
- Silt fences shown are necessary for sediment control during the duration of construction. Silt fences, straw barricades, and diversion ditches will be necessary to control sediment on a day-to-day basis in addition to those shown. Construct silt fences, straw barricades, or diversion ditches as necessary to intercept run off from newly graded areas at the end of each days grading.
 - The purpose of this portion of the work is to prevent erosion of soil during construction with essential temporary and permanent measures and structures, and to coordinate with the permanent storm drainage system of the completed construction.
 - Sequence of Construction:
 - Obtain grading permit for 1/2 acre to be cleared, graded and graded.
 - Clearsite as necessary to install silt fences.
 - Install silt fences.
 - On site inspection by conservation inspector, and approval of soil erosion measures.
 - Month grade site in order to establish drainage pattern of grading and permanent soil erosion structures, and issuance of certificate of compliance.
 - On site inspection by conservation inspector, approval of grading and permanent soil erosion structures, and issuance of certificate of compliance.
 - Begin finish grading, construction of building and other site improvements.
 - Provide permanent vegetative cover.
 - Final inspection by conservation inspector of permanent vegetative cover.
 - Denuded Area: 1/2 acre.
 - Length of construction: 1-18 months.



SILT FENCE

NOTE:

- SILT FABRIC TO BE A MINIMUM OF #2\"/>
- SILT FABRIC TO BE BURLAP (7-1/2 OZ.) OR MIRAF-140 FABRIC
- POSTS TO BE STEEL (6\"/>

PLAN AT C.B.

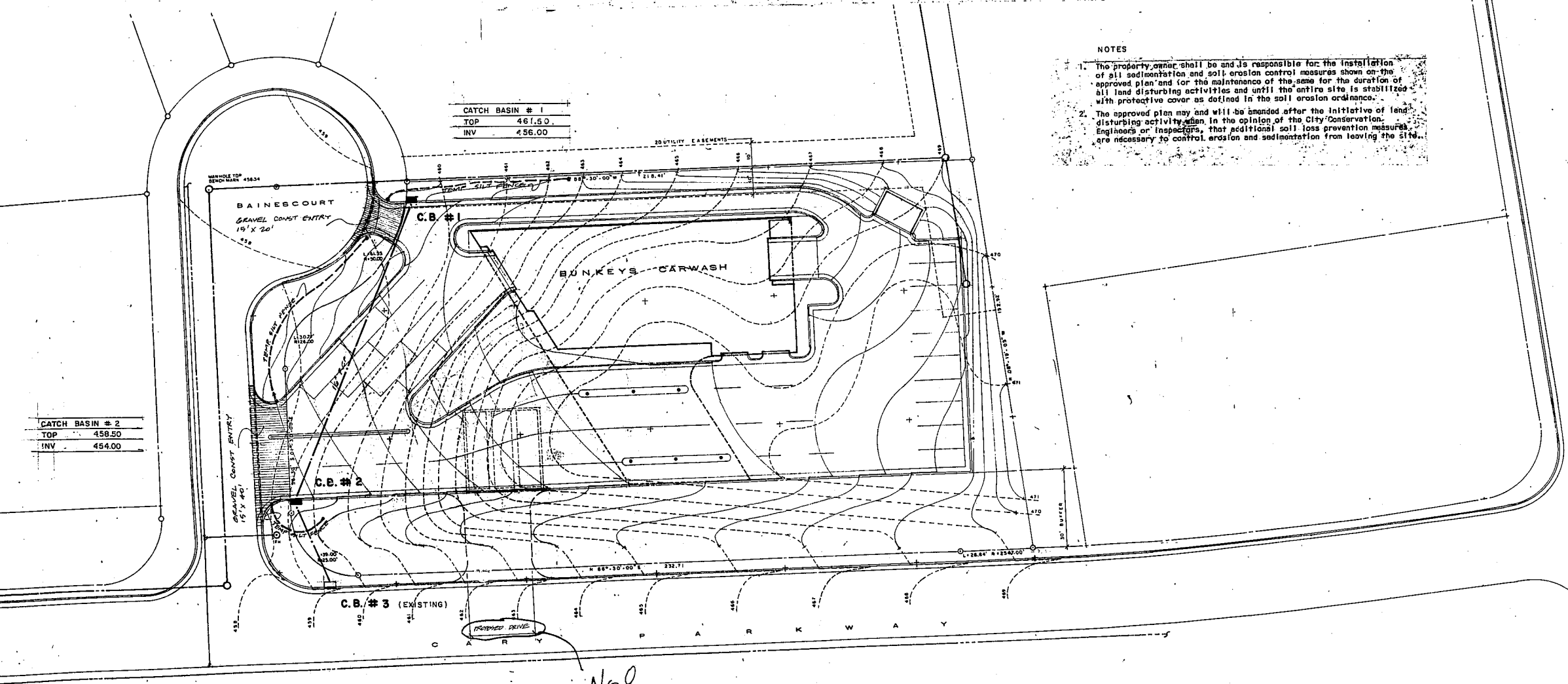
DRAWN	
CHECKED	
DATE	
REVISED	

LAWRENCE B. LAWRENCE ARCHITECTS
RALEIGH, NC
919/854-3153

J.M. THOMPSON CO.
7101 WILKINSON BLVD
RALEIGH, NC
919/851-1611

BUNKEY'S CARWASH
CARY, NORTH CAROLINA

- NOTES
- The property owner shall be and is responsible for the installation of all sedimentation and soil erosion control measures shown on the approved plan and for the maintenance of the same for the duration of all land disturbing activities and until the entire site is stabilized with protective cover as defined in the soil erosion ordinance.
 - The approved plan may and will be amended after the initiative of land disturbing activity begins. In the opinion of the City Conservation Engineer or Inspectors, that additional soil loss prevention measures are necessary to control erosion and sedimentation from leaving the site.



CATCH BASIN # 2	
TOP	458.50
INV	454.00

CATCH BASIN # 1	
TOP	461.50
INV	456.00

SITE PLAN — STORM DRAINAGE & EROSION CONTROL
SCALE: 1" = 20'-0"

7/17/2011
7/19/2011
7/21/2011
7/23/2011
7/25/2011
7/27/2011
7/29/2011
8/1/2011
8/3/2011
8/5/2011
8/7/2011
8/9/2011
8/11/2011
8/13/2011
8/15/2011
8/17/2011
8/19/2011
8/21/2011
8/23/2011
8/25/2011
8/27/2011
8/29/2011
8/31/2011
9/2/2011
9/4/2011
9/6/2011
9/8/2011
9/10/2011
9/12/2011
9/14/2011
9/16/2011
9/18/2011
9/20/2011
9/22/2011
9/24/2011
9/26/2011
9/28/2011
9/30/2011
10/2/2011
10/4/2011
10/6/2011
10/8/2011
10/10/2011
10/12/2011
10/14/2011
10/16/2011
10/18/2011
10/20/2011
10/22/2011
10/24/2011
10/26/2011
10/28/2011
10/30/2011
11/1/2011
11/3/2011
11/5/2011
11/7/2011
11/9/2011
11/11/2011
11/13/2011
11/15/2011
11/17/2011
11/19/2011
11/21/2011
11/23/2011
11/25/2011
11/27/2011
11/29/2011
11/30/2011
12/1/2011
12/3/2011
12/5/2011
12/7/2011
12/9/2011
12/11/2011
12/13/2011
12/15/2011
12/17/2011
12/19/2011
12/21/2011
12/23/2011
12/25/2011
12/27/2011
12/29/2011
12/31/2011