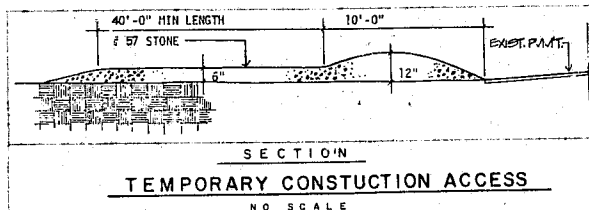
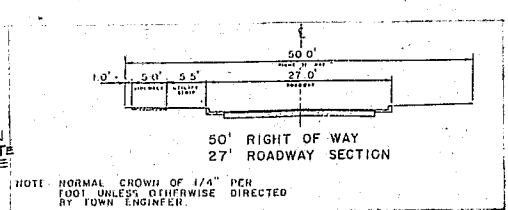
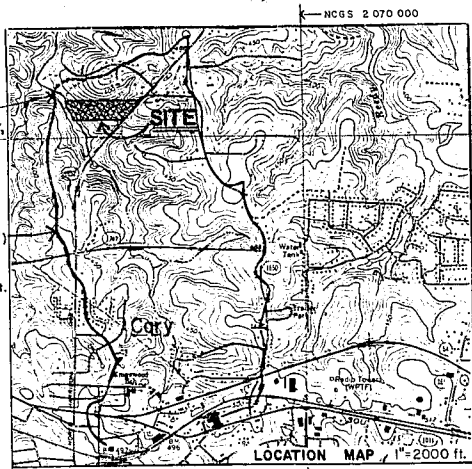


FEMA DATA  
SECTION "B"  
TRIBUTARY "A" OF BLACK CR.  
(From FLOOD INSURANCE STUDY,  
TOWN OF CARY, N.C. by  
U.S. Army Corps of Engineers)

WATERSHED (above Section "B")  
Area = 895 ac.  
Mean Slope = 9.49%  
Length of Watercourse = 11,500 ft.



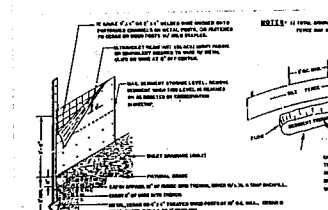
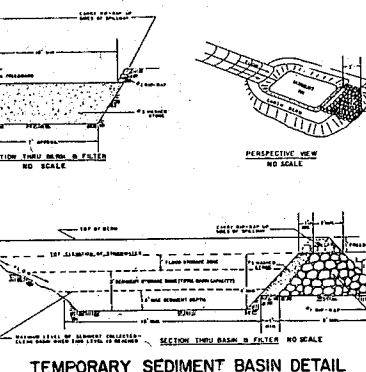
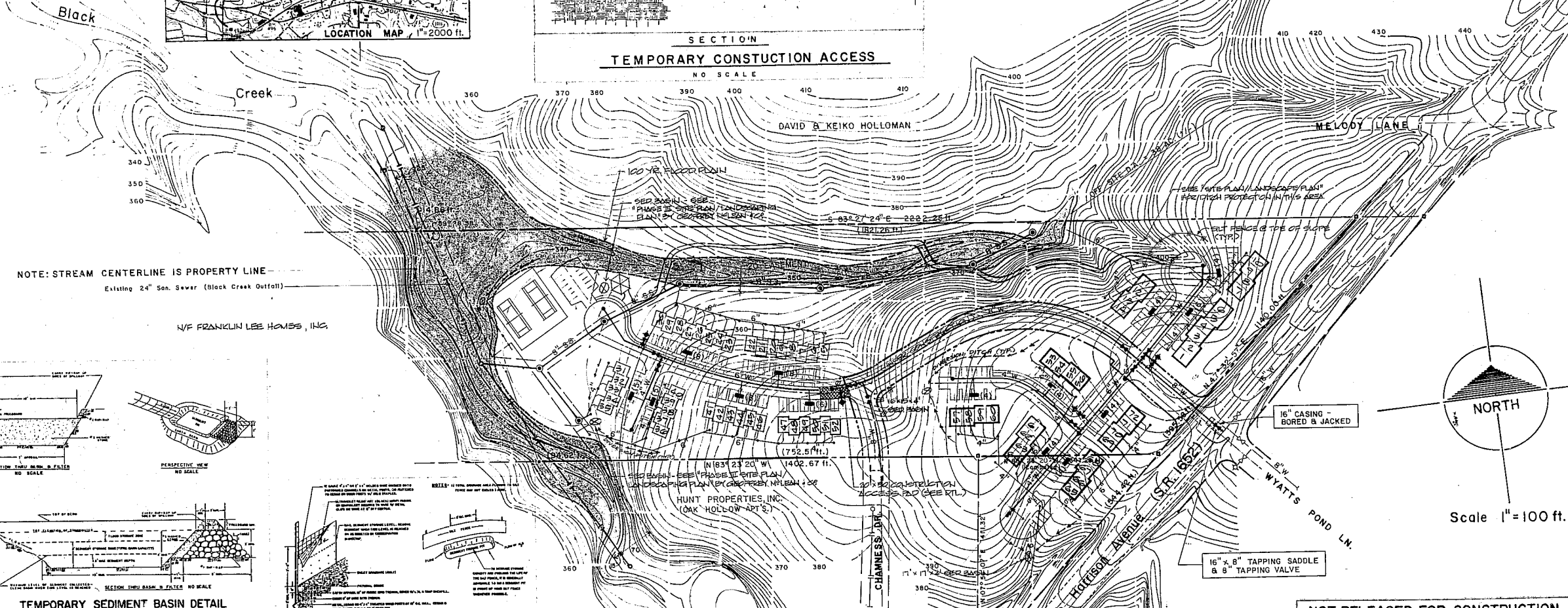
- #### CONSTRUCTION SEQUENCE
- Obtain Grading Permit from local authorities as required.
  - Clear streets sufficiently to enable access for construction of temporary erosion control measures.
  - Flag "Undisturbed Buffer" areas.
  - Construct all temporary erosion control measures as indicated on the Drawings.
  - Call for on-site inspection by local authorities.
  - Clear and rough grade site.
  - Grade streets.
  - Install utilities, storm drainage, and begin construction of buildings.
  - Seed ditches, slopes and shoulders, and other disturbed areas outside of building and parking areas. Install ditch stabilization measures as indicated.
  - Construct curb and gutter, pavement, and sidewalks.
  - When permanent seeding is established and approved, remove all temporary erosion control measures.

- #### SEEDING SPECIFICATIONS
- Obtain completed areas and spread topsoil 2 inches deep over adverse soil conditions, if available.
  - Rip the entire area to 6 inches depth.
  - Remove all loose rock, roots, and other obstructions leaving surface reasonably smooth and uniform.
  - Apply agricultural lime, fertilizer, and superphosphate uniformly and mix with soil (see below).
  - Continue tillage until a well-pulverized, firm, reasonably uniform seedbed is prepared 1 to 2 inches deep.
  - Seed on a freshly prepared seedbed and cover seed lightly with seeding equipment or collapse after seeding.
  - Mulch immediately after seeding and water mulch.
  - Protect all seeded areas and make necessary repairs or reseed during the planting season, if possible. If seed should be over 60 days, reestablish following original time, necessary reseedings.
  - Consult Conservation Inspector for seed selection and fertilization after permanent cover is established.
  - Apply Agricultural Lime, Fertilizer, and Superphosphate to clay soils.  
Fertilizer - 1-0-0 (see note 4)  
Superphosphate - 0-20-0 (see note 4)  
Lime - King's Brand (see note 4)

#### SEEDING SPECIFICATIONS

Soil Types, Slope Disturb., Slopes (Max. 3:1)

| SEEDING PERIOD  | LIFE                                   | PER ACRE | APPLICATION RATE PER 1000 S.F. |
|-----------------|--|----------|--------------------------------|
| Aug 15 - Nov 1  | Tall Fescue                            | 150      | 1.5                            |
| Nov 1 - Mar 1   | Tall Fescue                            | 150      | 1.5                            |
| Mar 1 - Apr 15  | Tall Fescue                            | 150      | 1.5                            |
| Apr 15 - Jul 15 | Common Bermudagrass                    | 150      | 1.5                            |
| Jul 15 - Aug 15 | Tall Fescue and<br>Common Bermudagrass | 150      | 1.5                            |
|                 | Seeding Rate                           | 300      | 3.0                            |
|                 | Seeding Rate                           | 300      | 3.0                            |
|                 | Seeding Rate                           | 300      | 3.0                            |



- #### GENERAL NOTES
- ALL WATER & WASTEWATER FACILITIES SHALL BE CONSTRUCTED IN ACCORDANCE WITH THE STANDARD REQUIREMENTS AND SPECIFICATIONS OF THE TOWN OF CARY.
  - WATER FEEDER LINES TO GANG METER ASSEMBLIES SHALL BE EQUIPPED WITH CURB STOPS.
  - INSTALL SILT FENCE AROUND CATCH BASIN INLETS DURING CONSTRUCTION.
  - ROADWAY & STORM DRAINAGE FACILITIES SHALL BE CONSTRUCTED IN ACCORDANCE WITH THE STD. REQUIREMENTS & SPECIFICATIONS OF THE TOWN OF CARY.

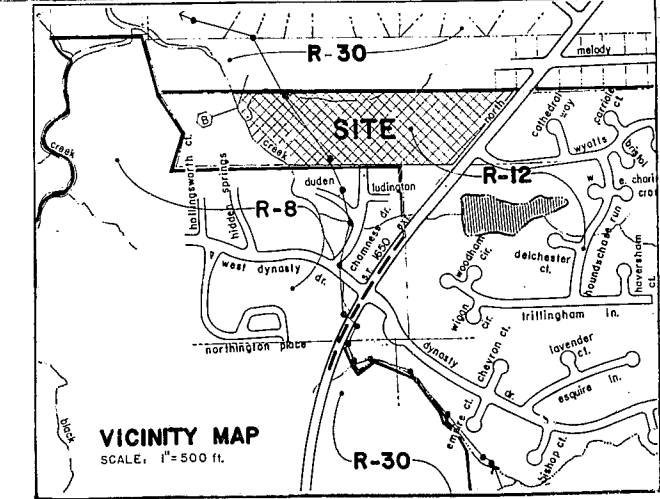
#### MULTIPLE WATER SERVICES ("GANG" METERS)

| SIZE OF TAP & FEEDER CONNECTION | NO. OF METERS & SERVICE BRANCHES |
|---------------------------------|----------------------------------|
| 3/4"                            | 1 - 2                            |
| 1"                              | 3 - 4                            |
| 1 1/2"                          | 5 - 10                           |

APPROVED  
P&T 6/16/86 (6/14/86)  
TC 4/20/86  
RCS

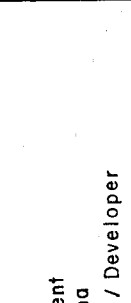
#### LEGEND

|   | EXISTING | PROPOSED     |
|---|----------|--------------|
| WATER MAIN & VALVE (size as noted)                                  | [Symbol] | [Symbol]     |
| FIRE HYDRANT & BRANCH VALVE   | [Symbol] | [Symbol]     |
| REDUCER   | [Symbol] | [Symbol]     |
| GANG METER ASSEMBLY & FEEDER CONNECTION [( ) - no. of units served] | N/A      | [Symbol] (6) |
| BLOW-OFF ASSEMBLY   | N/A      | [Symbol]     |
| SEWER MAIN & MANHOLE (size as noted)                                | [Symbol] | [Symbol]     |
| SEWER LATERAL & CLEANOUT (size as noted)                            | N/A      | [Symbol]     |



TATE LANNING & ASSOCIATES  
ENGINEERS  
CONSULTING  
RALEIGH, NORTH CAROLINA

GEORGE McLEAN & Co.  
LANDSCAPE ARCHITECTURE  
LAND PLANNING • URBAN DESIGN



CAMBRIDGE FOREST  
A Proposed Planned Unit Development  
In The Town of Cary, North Carolina  
Circle - R Development, Inc., Owner / Developer

REVISED: 5-17-86/LBE / 6/17/86 / APR 4, 1986-HTM / REV'D APR 24, 86-HTM / REV'D DEC 12, 85 / REV'D FEB 19, 86 / REV'D MAR 5, 86 / 11-11-85

SHEET NO.

MP-2