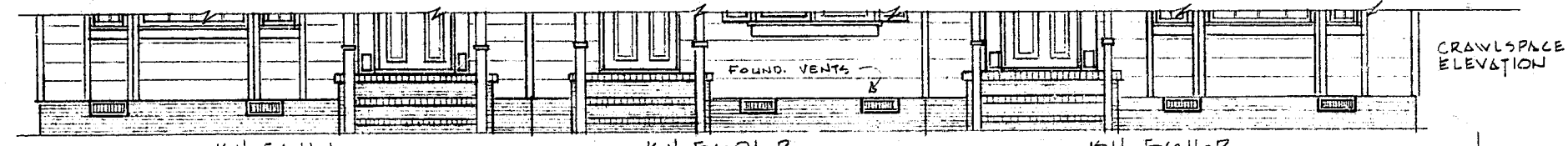




KH. 5611-L

KH. 5601-R

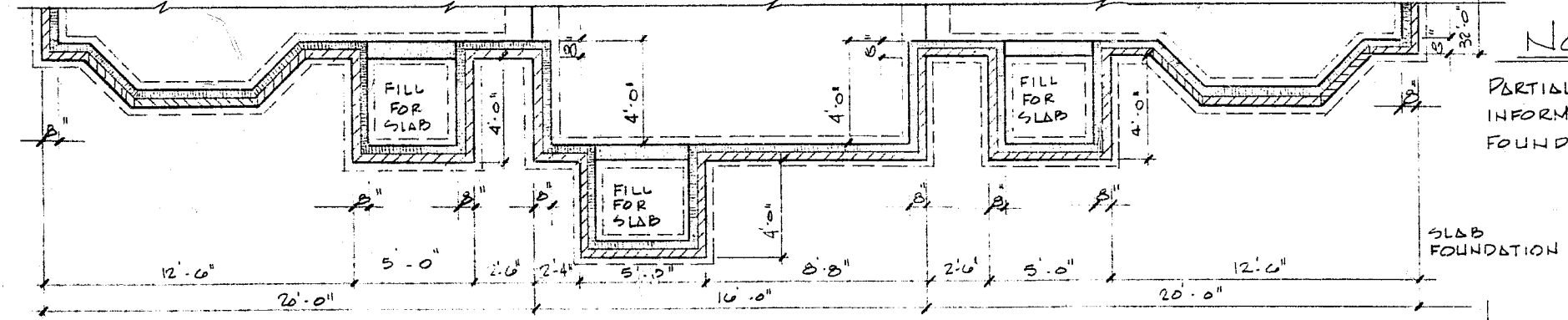
KH. 5611-R



KH. 5611-L

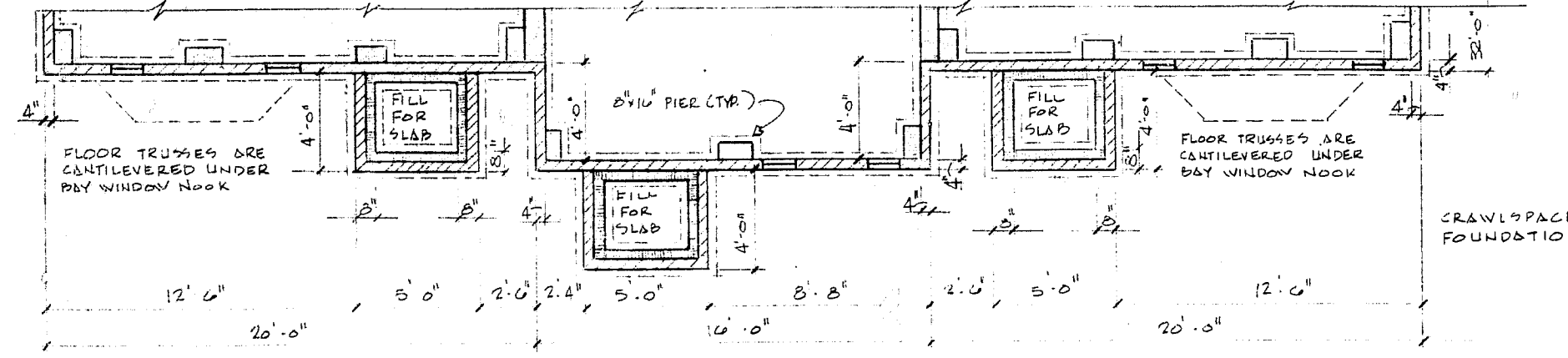
KH. 5601-R

KH. 5611-R



**NOTE:**

PARTIAL FOUNDATIONS ARE FOR GENERAL OFFSET INFORMATION ONLY. SEE APPROPRIATE BUILDING FOUNDATION LAYOUT FOR ACTUAL CONSTRUCTION.



SCALE: 1/4" = 1'-0"

- GENERAL NOTES
- ALL SIDING TO BE 8" HORIZ. LAP.
  - USE 5/4 x 5 BD @ ALL FRONT & REAR CORNERS.
  - USE 5/4 x 4 BD @ ALL SIDE CORNERS.
  - A 1.0' ROOF OVERHANG IS STANDARD FRONT AND REAR.
  - USE A 6" GABLE OVERHANG @ BLDG. ENDS.
  - ALL SHUTTERS TO BE WOOD RAISED PANEL.
  - KH. 5601 IS TO RECEIVE (2) 6" x 6" TURNED WOOD POSTS @ ENTRY PORCH.
  - KH. 5611 IS TO RECEIVE A C-157 FLAT ENTRANCE FEATURE

		<b>key homes</b>		SHEET NO. <b>3A</b>
DATE	REVISION #	DATE	KH-5600 KH-5610 STANDARD 3 REX	
		5-28-06		
		DRAWN	DAF	