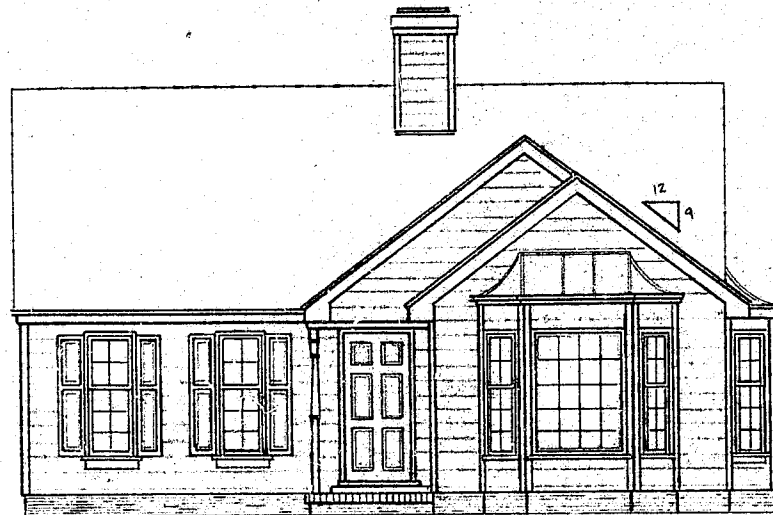


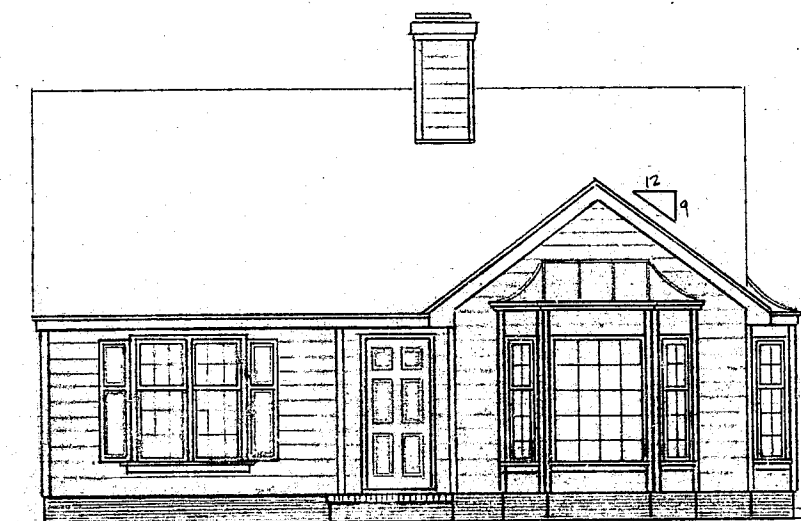
KH-5125 RD-R (SLAB) 3/16" = 1'-0"



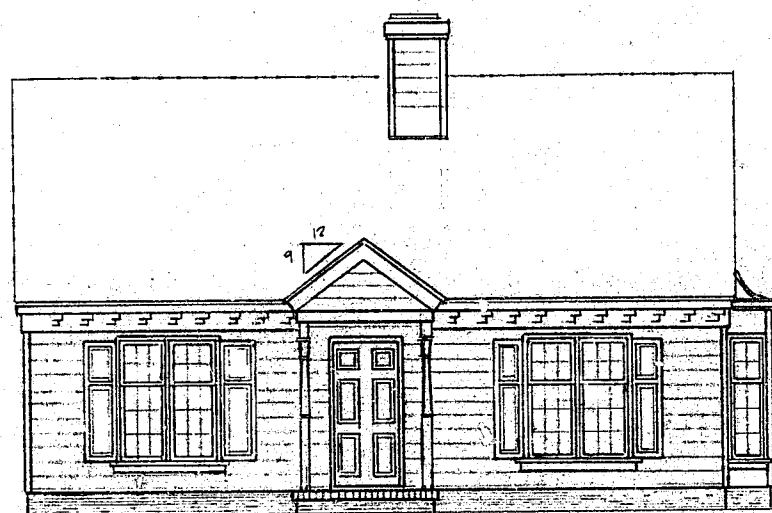
KH-5127 RD-R (SLAB) 3/16" = 1'-0"

ELEVATION NOTES:

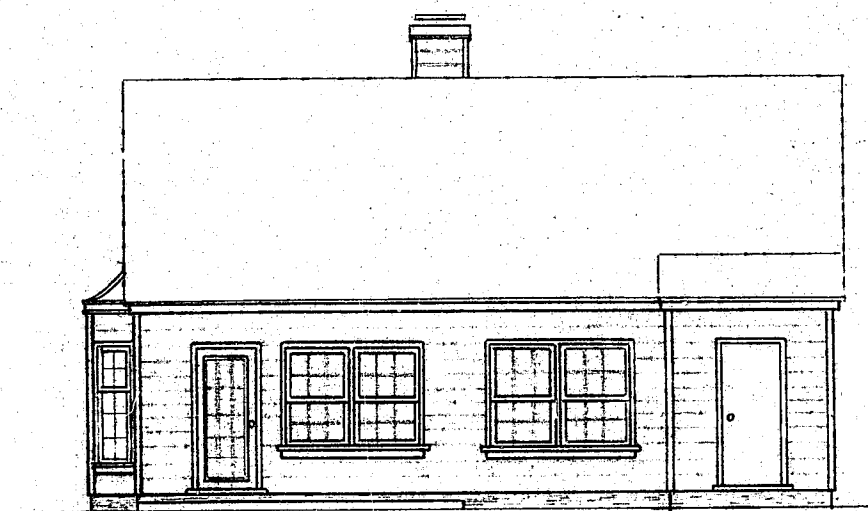
- ALL UNITS ARE TO RECEIVE 8" BEADED HORIZ. SIDING.
- A 1'-0" OVERHANG IS TYPICAL @ FRONT AND REAR AND AT ALL REVERSE GABLES.
- USE A 5/4 x 5 CORNER BOARD ON OUTSIDE OF CORNER (FRONT & REAR ELEV.) AND A 5/4 x 4 CORNER BOARD ON INSIDE OF CORNER (SID. END ELEVATION).
- ALL BAY WINDOWS TO RECEIVE COPPER ROOF CAP. SEE DETAIL, SHT. # 2.
- ALL SHUTTERS TO BE 1" x 5" RAISED PANEL WOOD SHUTTERS.
- SEE SHT. # 2 FOR DOOR AND WINDOW SIZE AND LOCATION.
- USE 5" x 5" TURNED POST @ CORNERS OF PORCH.



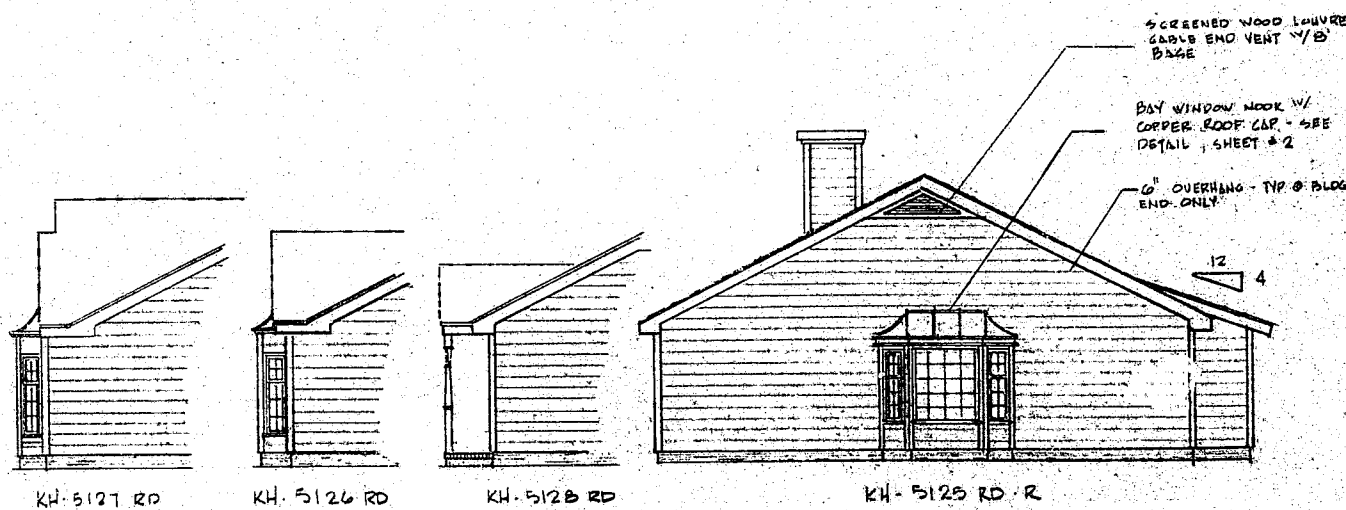
KH-5126 RD-R (SLAB) 3/16" = 1'-0"



KH-5128 RD-R (SLAB) 3/16" = 1'-0"



TYPICAL KH-5120 RD-R REAR ELEVATION 3/16" = 1'-0"



KH-5127 RD

KH-5126 RD

KH-5128 RD

KH-5125 RD-R

TYPICAL BUILDING END ELEVATION SCALE: 1/8" = 1'-0"

				KH-5120 RD	SHEET NO. 3
DATE	REVISION #	DATE	DRAWN		
		4-28-06	DAF		
				ENTRY ELEVATIONS	