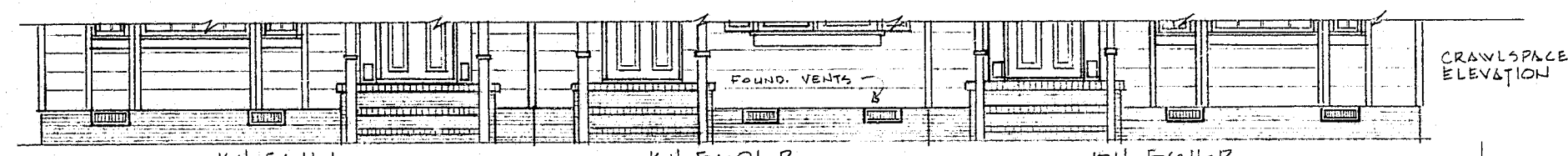




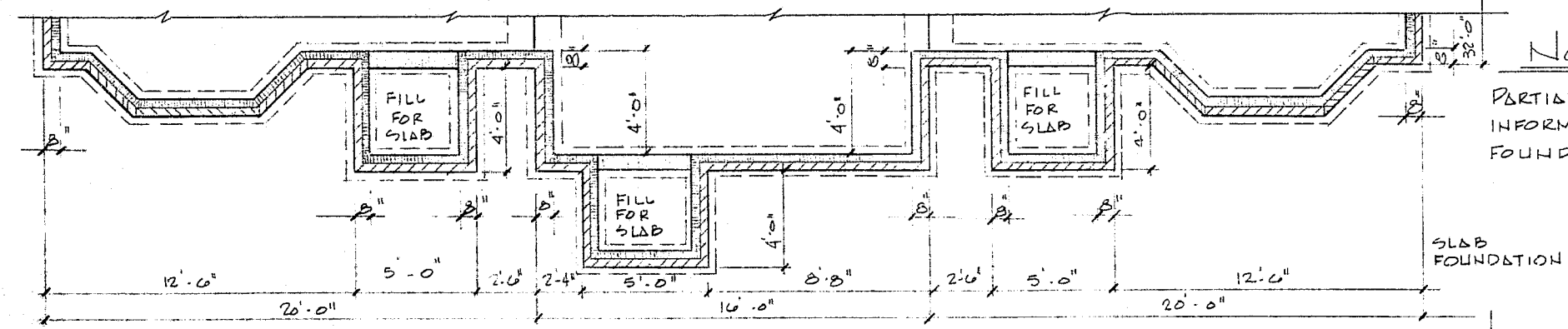
GENERAL NOTES

- ALL SIDING TO BE 8" HORIZ. LAP.
- USE 5/4 x 5 BD @ ALL FRONT & REAR CORNERS.
- USE 5/4 x 4 BD @ ALL SIDE CORNERS.
- A 1'-0" ROOF OVERHANG IS STANDARD FRONT AND REAR.
- USE A 6" GABLE OVERHANG @ BLDG. ENDS.
- ALL SHUTTERS TO BE WOOD RAISED PANEL.
- KH-5601 IS TO RECEIVE (2) 6" x 6" TURNED WOOD POSTS @ ENTRY PORCH.
- KH-5611 IS TO RECEIVE A C-157 FLAT ENTRANCE FEATURE

KH-5611-L KH-5601-R KH-5611-R

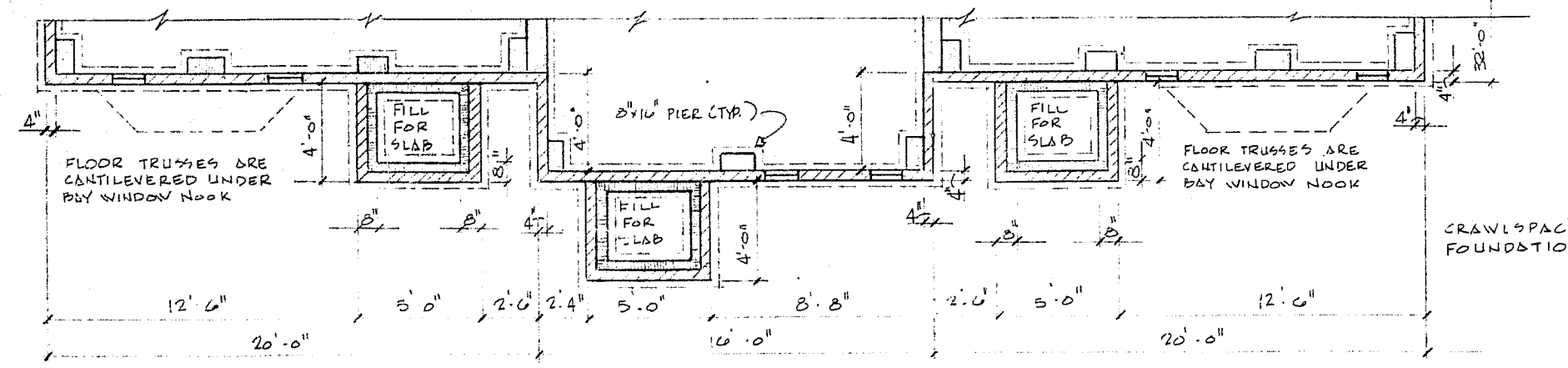


KH-5611-L KH-5601-R KH-5611-R



NOTE:

PARTIAL FOUNDATIONS ARE FOR GENERAL OFFSET INFORMATION ONLY. SEE APPROPRIATE BUILDING FOUNDATION LAYOUT FOR ACTUAL CONSTRUCTION.



SCALE: 1/4" = 1'-0"

key homes				SHEET NO. 3A
DATE	REVISION #	DATE	KH-5600 KH-5610 STANDARD 3 REX	
		5-28-06		
		DRAWN		
		DAF		