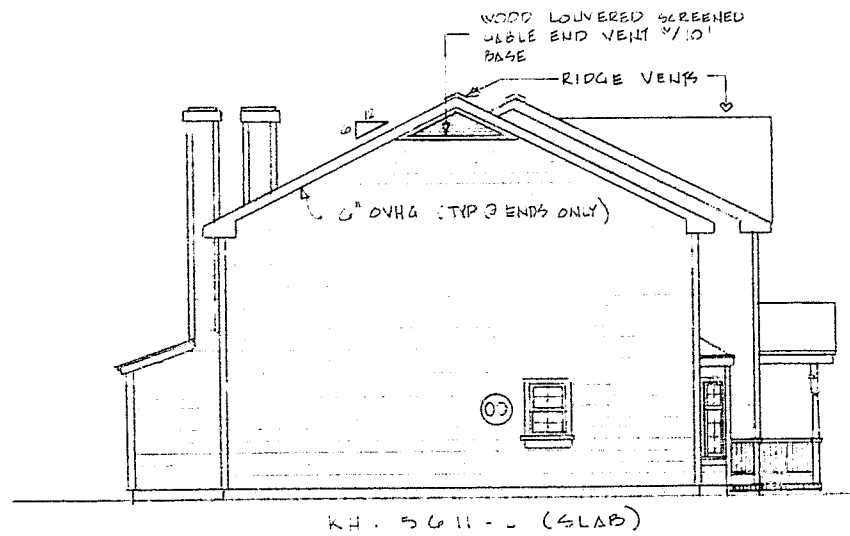
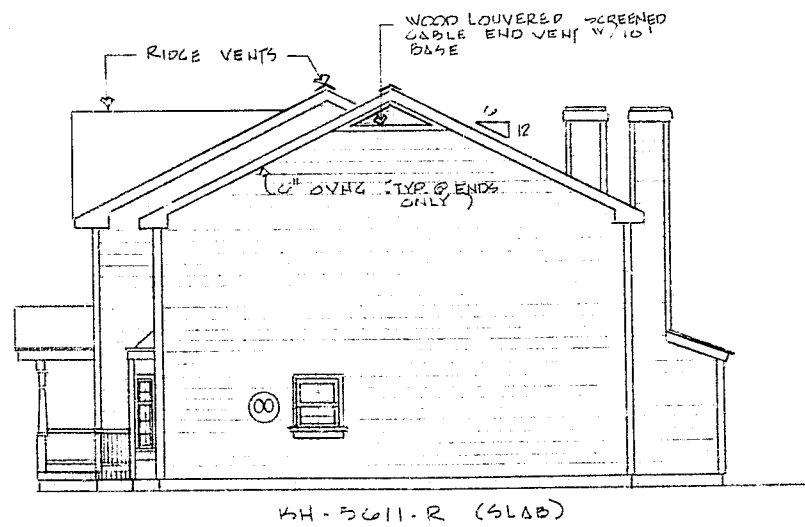


BUILDING REAR ELEVATION scale: 3/16"


REFER TO GENERAL NOTES ON SHEET 3A FOR INFORMATION ABOUT REAR AND END ELEVATIONS



BUILDING LEFT END ELEVATION scale: 1/8" = 1'-0"



BUILDING RIGHT END ELEVATION scale: 1/8" = 1'-0"

				SHEET NO. 3A SUPP.
DATE	REVISION #	DATE	KH-5600 KH-5610 STANDARD 3 REX.	
		5/20/06	DRAWN DAF	