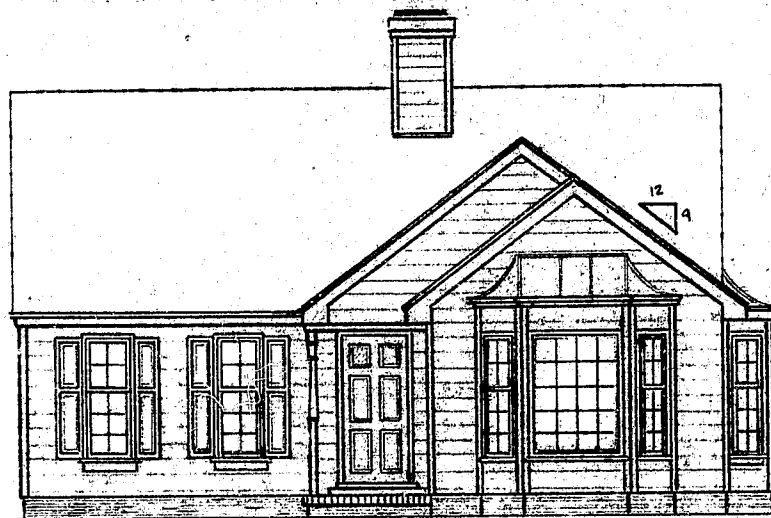
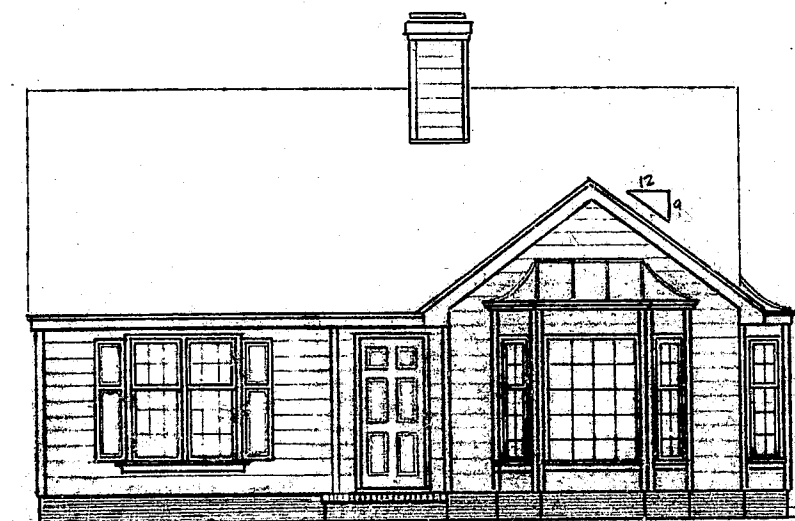


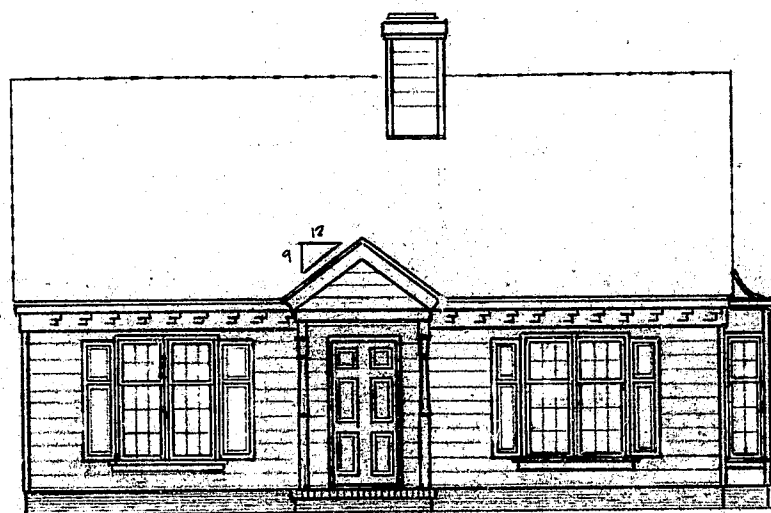
KH-5125 RD-R (SLAB) 3/16" = 1'-0"



KH-5127 RD-R (SLAB) 3/16" = 1'-0"



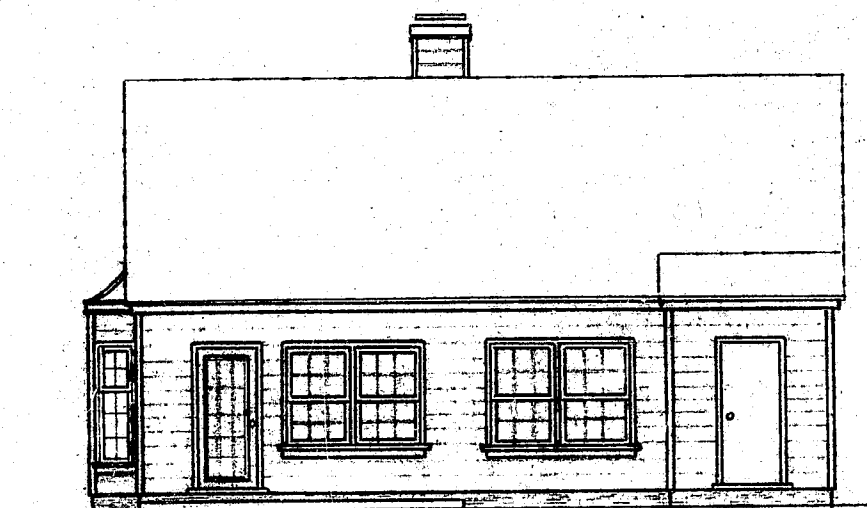
KH-5126 RD-R (SLAB) 3/16" = 1'-0"



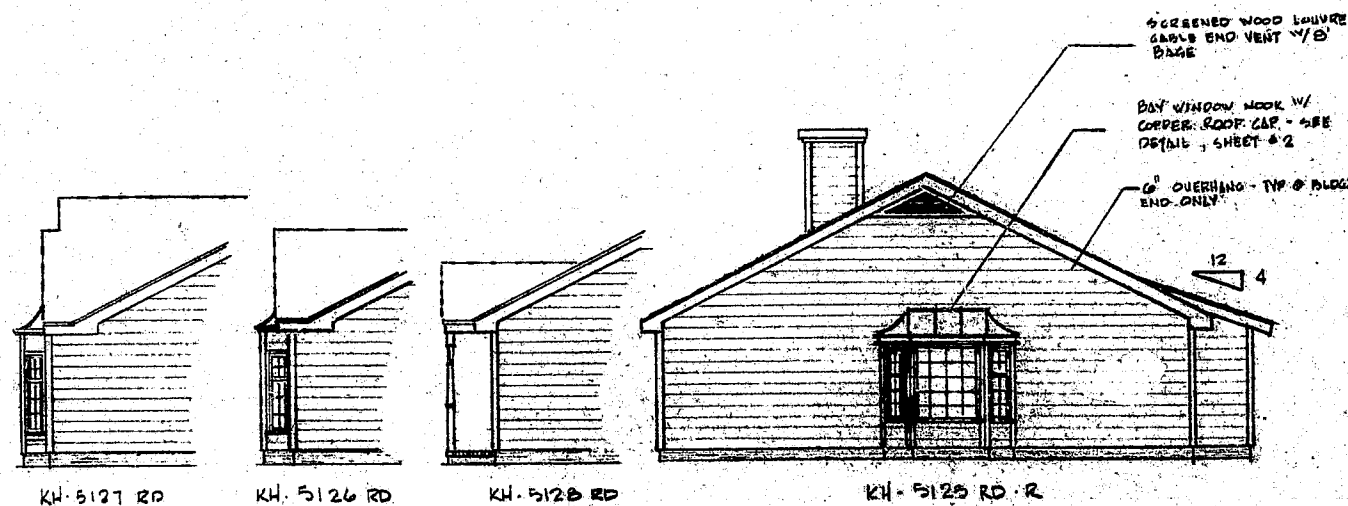
KH-5128 RD-R (SLAB) 3/16" = 1'-0"

ELEVATION NOTES:

- ALL UNITS ARE TO RECEIVE 8" BEADED HORIZ. SIDING.
- A 1'-0" OVERHANG IS TYPICAL @ FRONT AND REAR AND AT ALL REVERSE GABLES.
- USE A 3/4" x 5" CORNER BOARD ON OUTSIDE OF CORNER (FRONT & REAR ELEV.) AND A 3/4" x 4" CORNER BOARD ON INSIDE OF CORNER (END ELEVATION).
- ALL BAY WINDOWS TO RECEIVE COPPER ROOF CAP. SEE DETAIL, SHT. #2.
- ALL SHUTTERS TO BE 1" x 5" RAISED PANEL WOOD SHUTTERS.
- SEE SHT. #2 FOR DOOR AND WINDOW SIZE AND LOCATION.
- USE 5" x 5" TURNED POST @ CORNERS OF PORCH.



TYPICAL KH-5120 RD-R REAR ELEVATION 3/16" = 1'-0"



KH-5127 RD

KH-5126 RD

KH-5128 RD

KH-5125 RD-R

TYPICAL BUILDING END ELEVATION SCALE: 1/8" = 1'-0"

| | | | |
|------|------------|---------|------------------|
| | | | |
| DATE | REVISION # | DATE | KH-5120 RD |
| | | 4-28-06 | |
| | | DRAWN | ENTRY ELEVATIONS |
| | | DAF | |
| | | | SHEET NO. |
| | | | 3 |