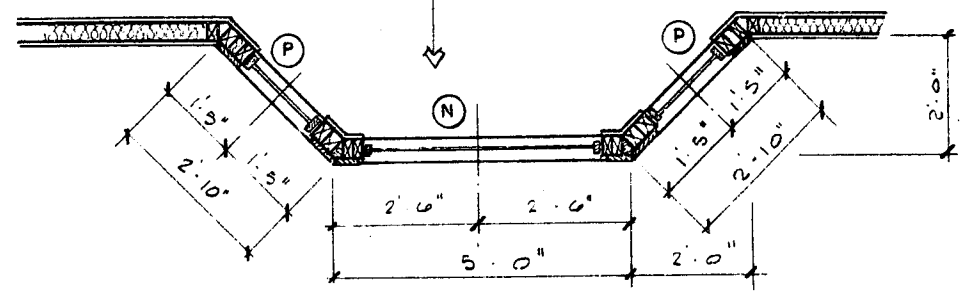
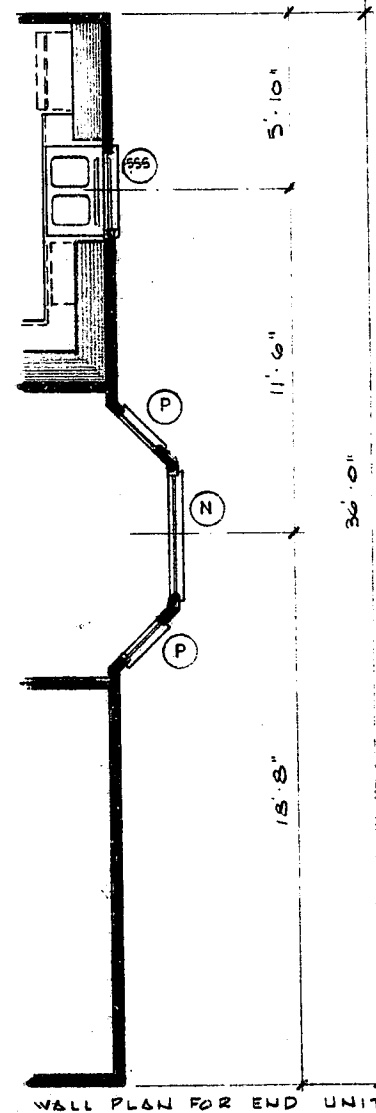


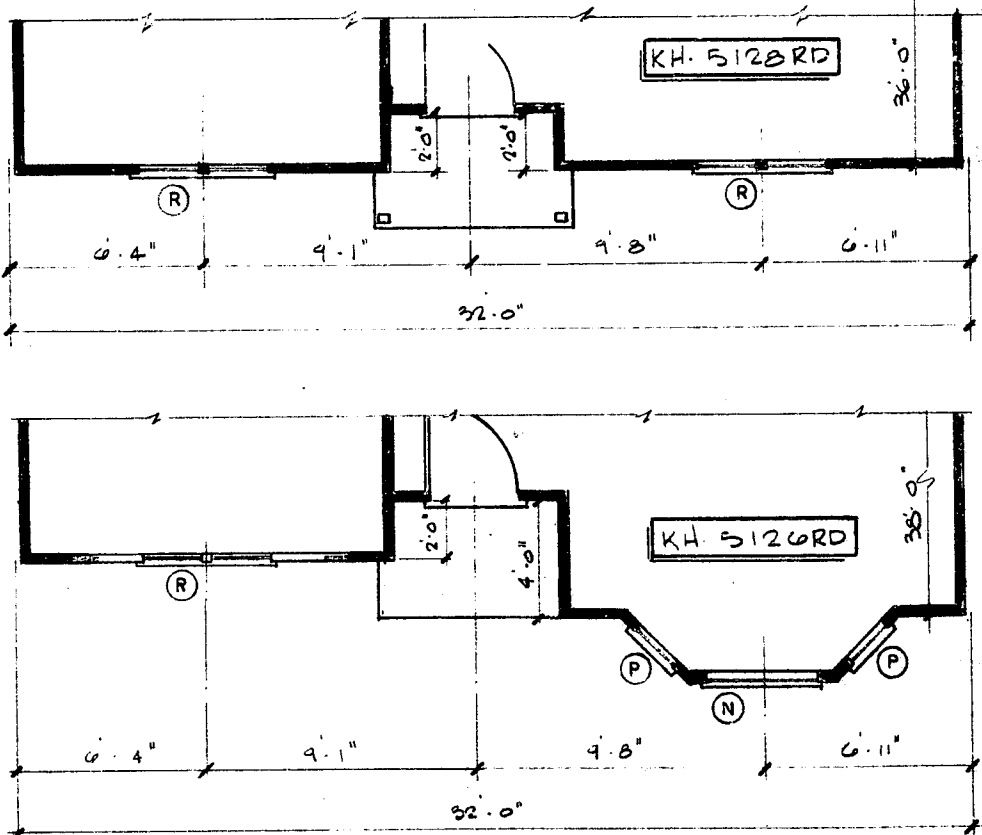
THIS IS THE STANDARD BAY WINDOW FOR THE 5120 RD. USE ONLY 3/4" x 5" CORNER BOARDS ON BAY WINDOW CORNERS. BAY WINDOW NOOK WILL EXTEND FROM FLR. TO CLG.



KH-5120 RD STANDARD BAY WINDOW  
SCALE: 1/2" = 1'-0"



WALL PLAN FOR END UNIT



(RIGHT HAND PLAN)

		KH-5120 RD		2
DATE	REVISION #	DATE	DRAWN	SHEET NO.
		4-28-84	DAF	