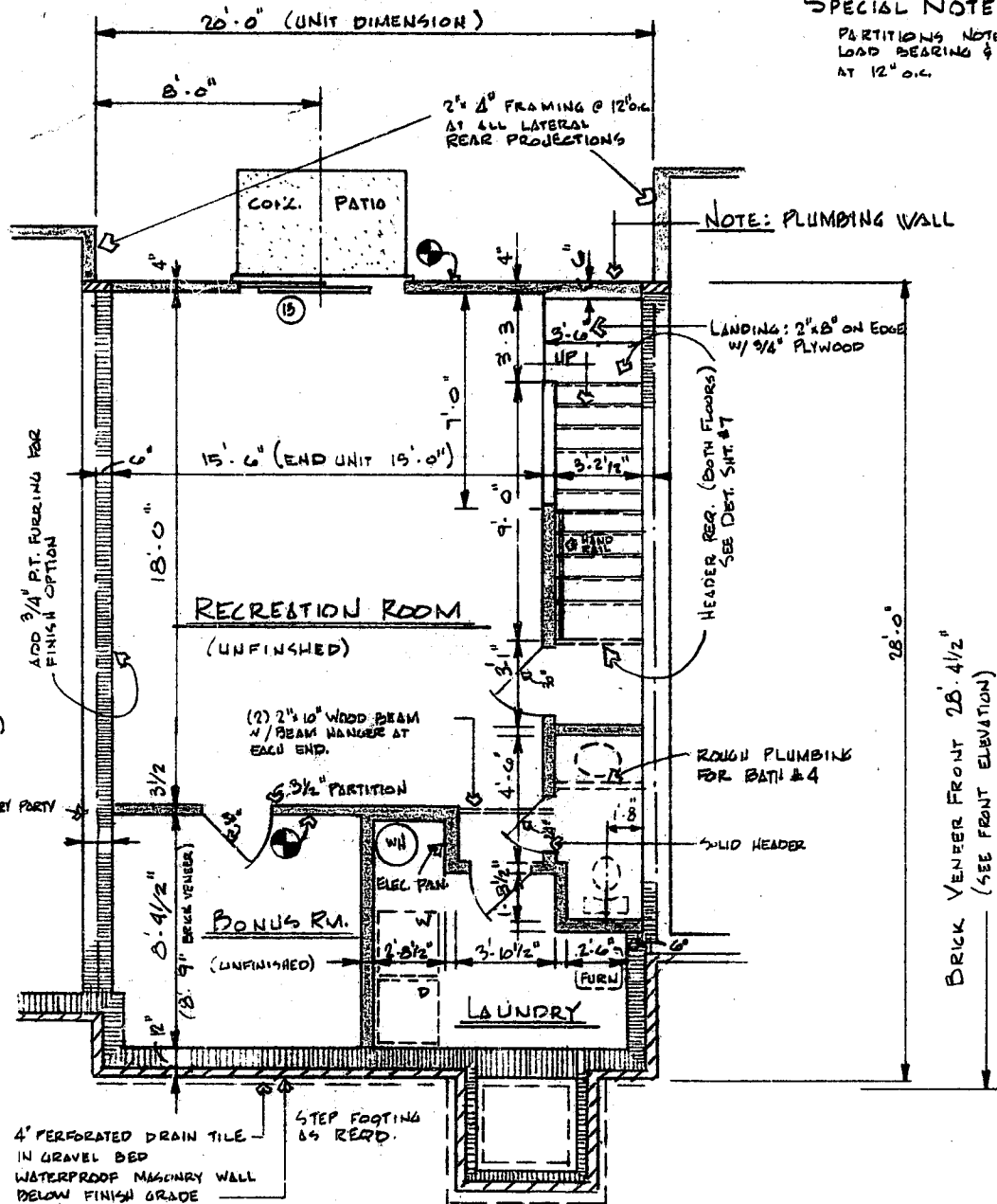


FOUNDATION PLAN

RIGHT HAND PLAN

KH. 5320 & KH. 5330

SCALE: 1/4" = 1'-0"



LOWER LEVEL FLOOR PLAN

LEFT HAND PLAN

KH. 5320 & KH. 5330

SPECIAL NOTE:
PARTITIONS NOTED THICK ARE
LOAD BEARING & REQUIRE 4" OR 6" STUDS
AT 12" O.C.

NOTE: PLUMBING WALL

BRICK VENTER FRONT 28'-4 1/2"
(SEE FRONT ELEVATION)



DATE	REVISION #	DATE	BY	DESCRIPTION
3-25-89				
10-19-89	(2) DAF		DF	REV. BONUS RM.
10-10-89	(1) DAF		DF	GENERAL REVISIONS

SHEET NO. 1