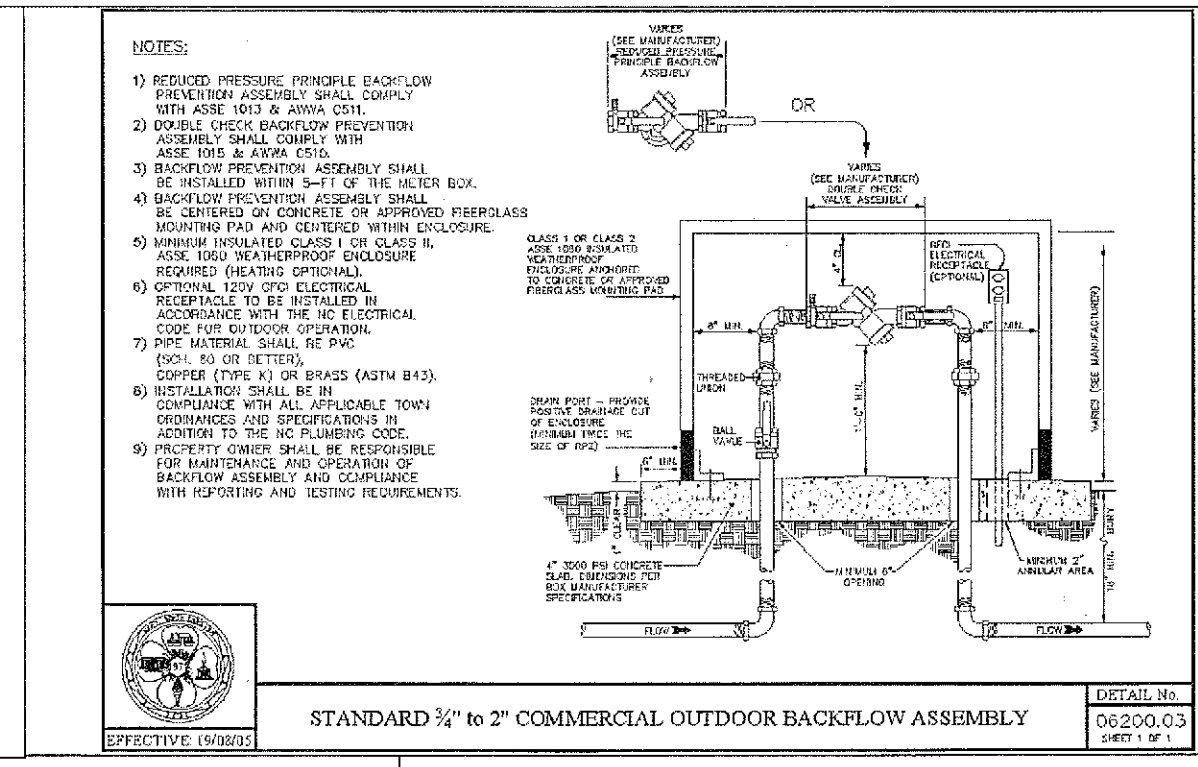
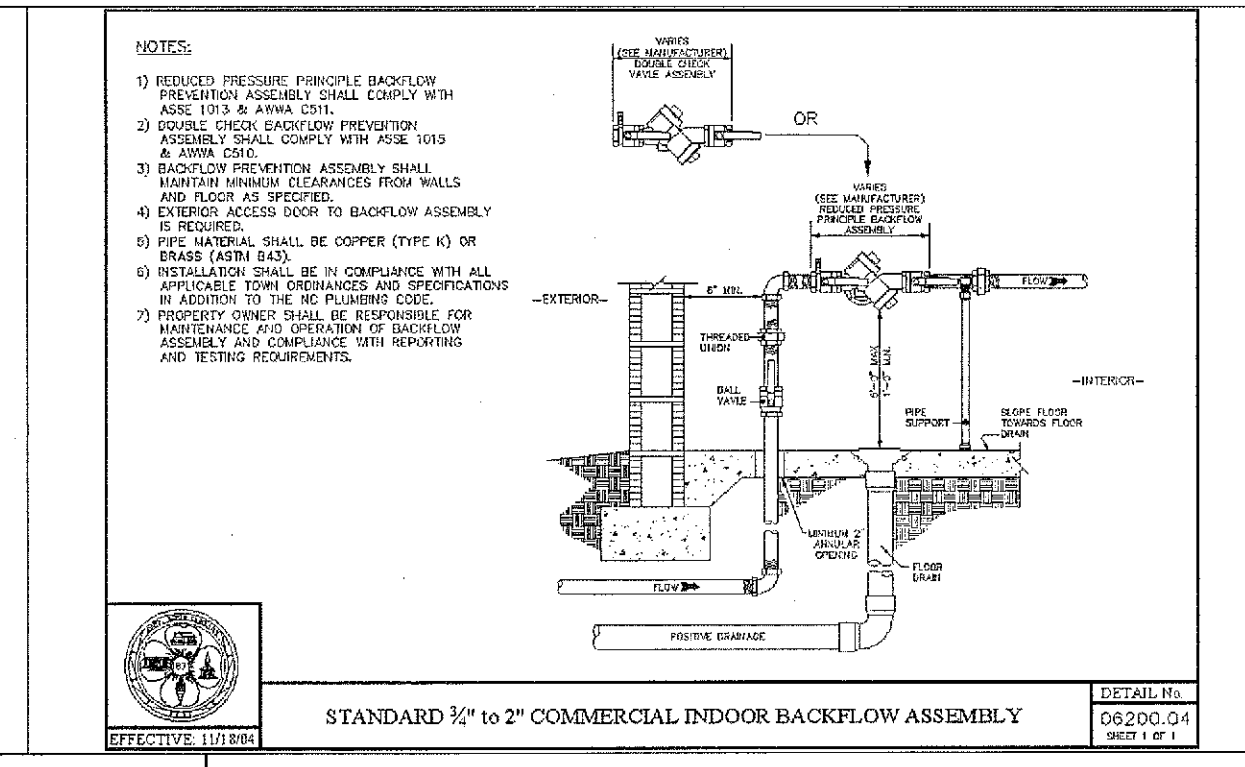


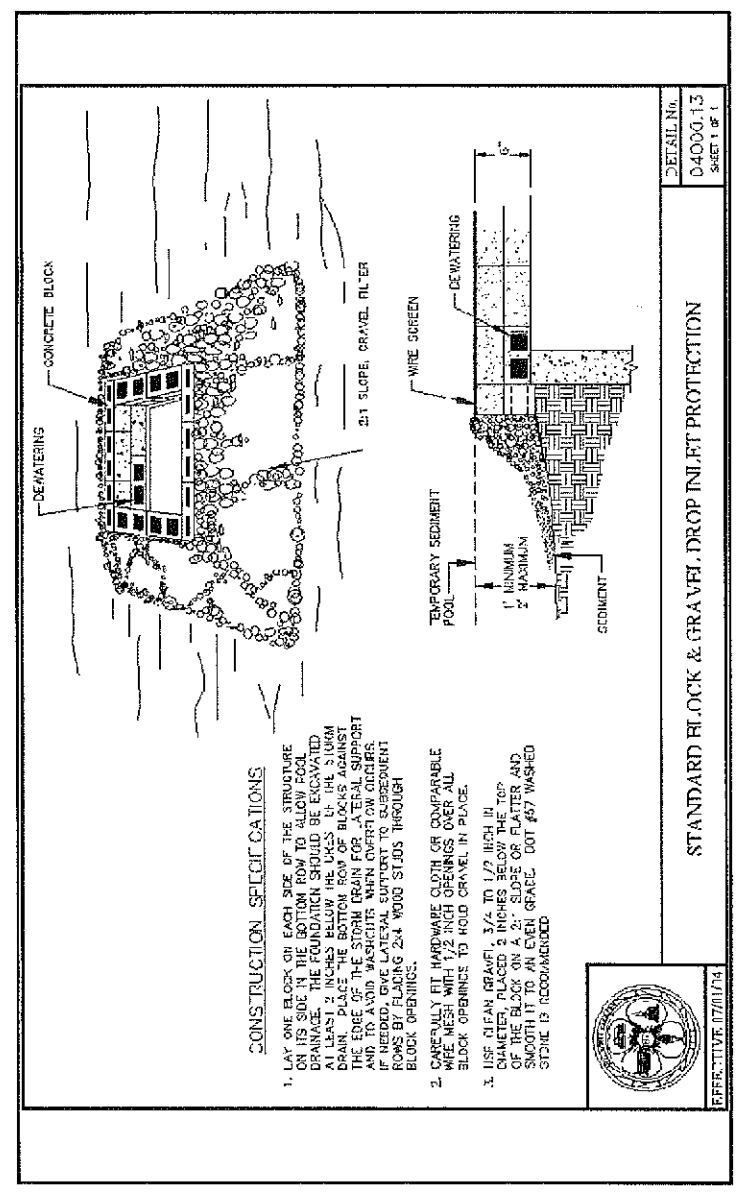
STANDARD TYPICAL IRRIGATION SERVICE CONNECTIONS
 DETAIL No. 06200.01
 SHEET 1 OF 1
 EFFECTIVE 11/1/84



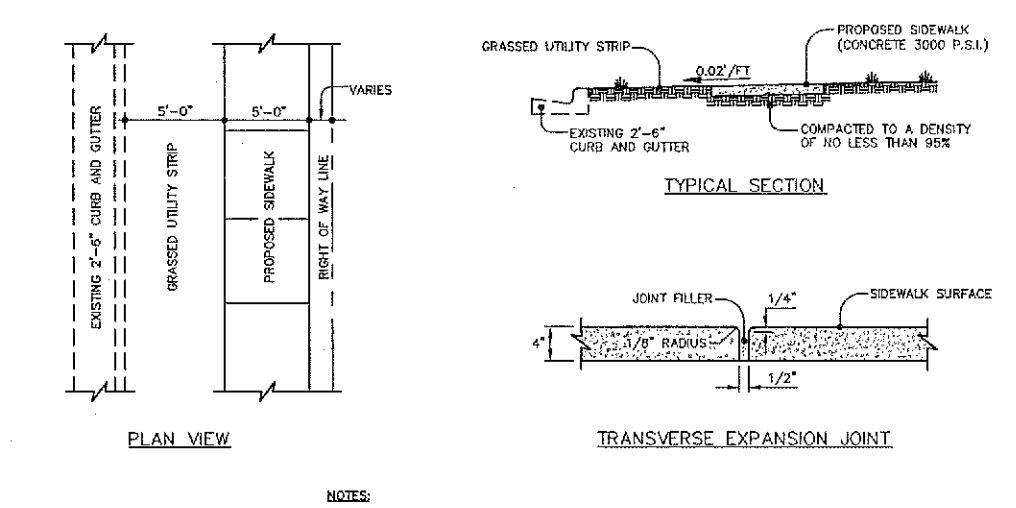
STANDARD 3/4" to 2" COMMERCIAL OUTDOOR BACKFLOW ASSEMBLY
 DETAIL No. 06200.03
 SHEET 1 OF 1
 EFFECTIVE 11/1/84



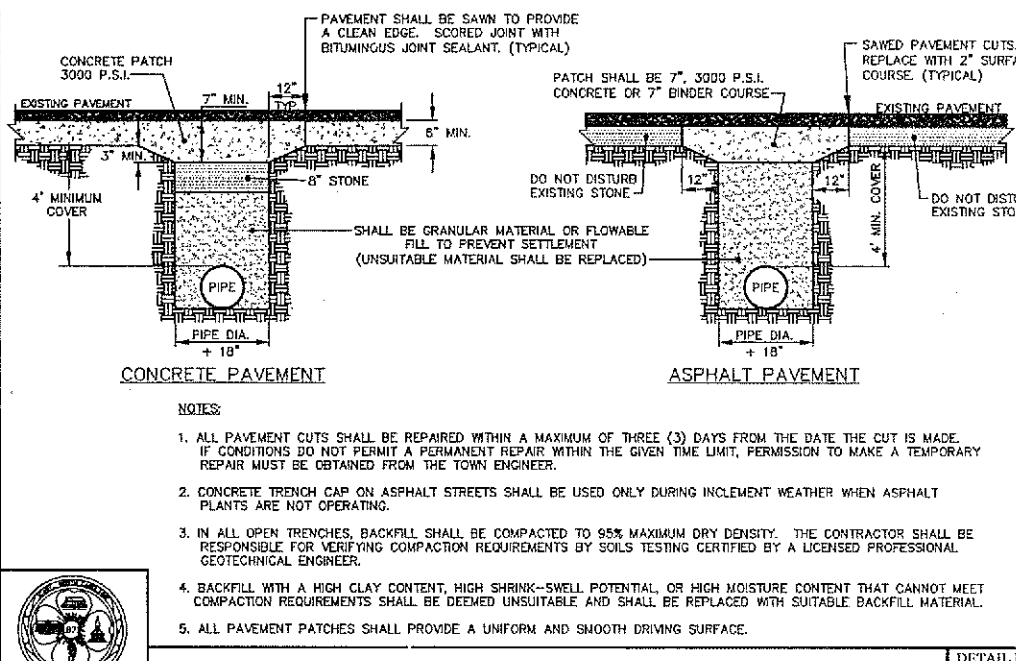
STANDARD 3/4" to 2" COMMERCIAL INDOOR BACKFLOW ASSEMBLY
 DETAIL No. 06200.04
 SHEET 1 OF 1
 EFFECTIVE 11/1/84



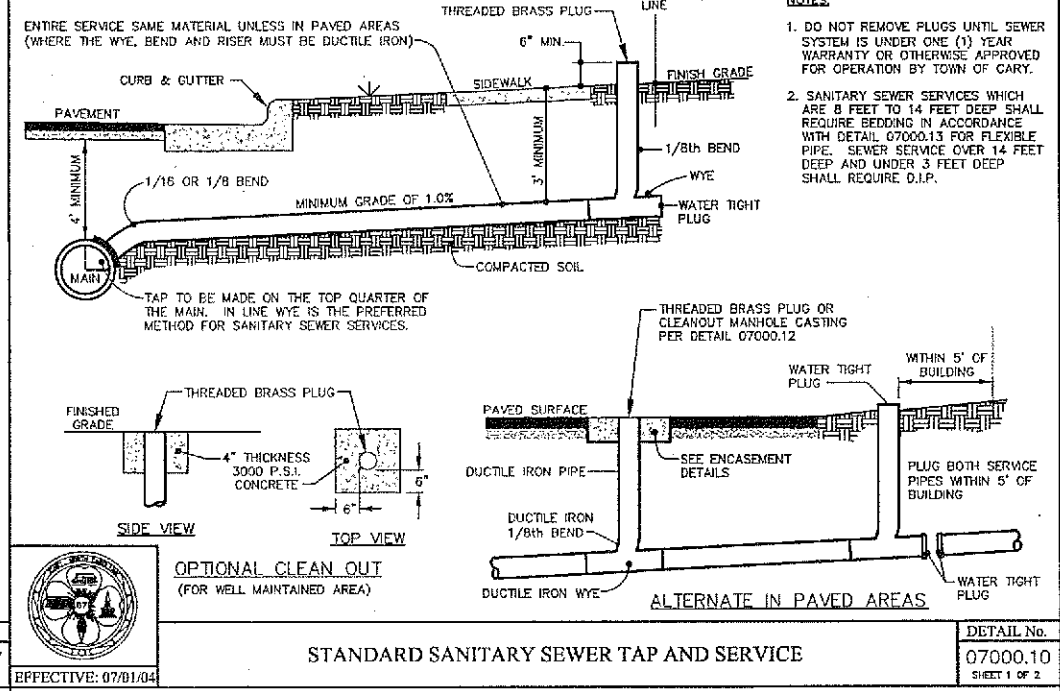
STANDARD BLOCK & GRAVEL DROP INLET PROTECTION
 DETAIL No. 04000.13
 SHEET 1 OF 1
 EFFECTIVE 07/01/04



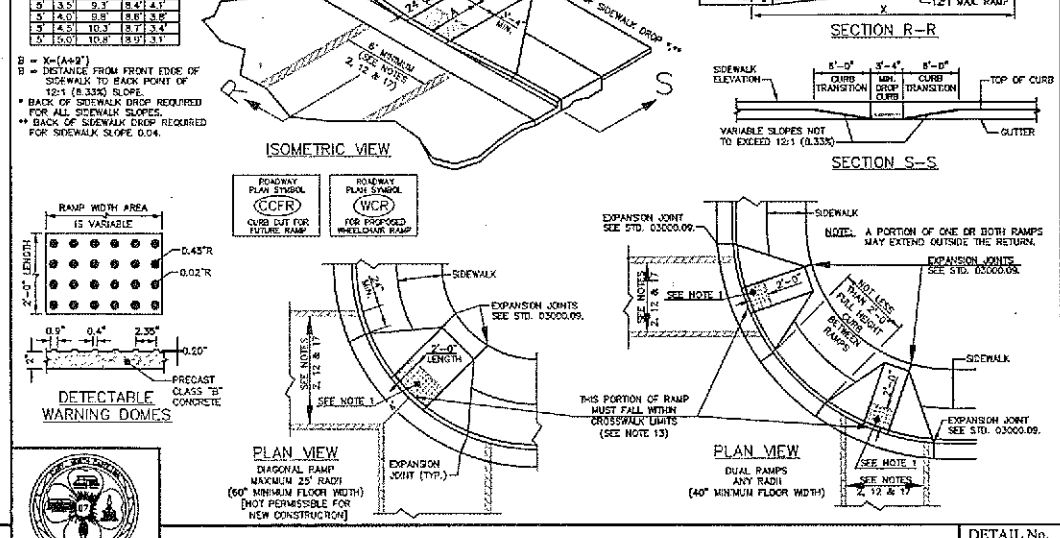
STANDARD CONCRETE SIDEWALK
 DETAIL No. 03000.07
 SHEET 1 OF 1
 EFFECTIVE 07/01/04



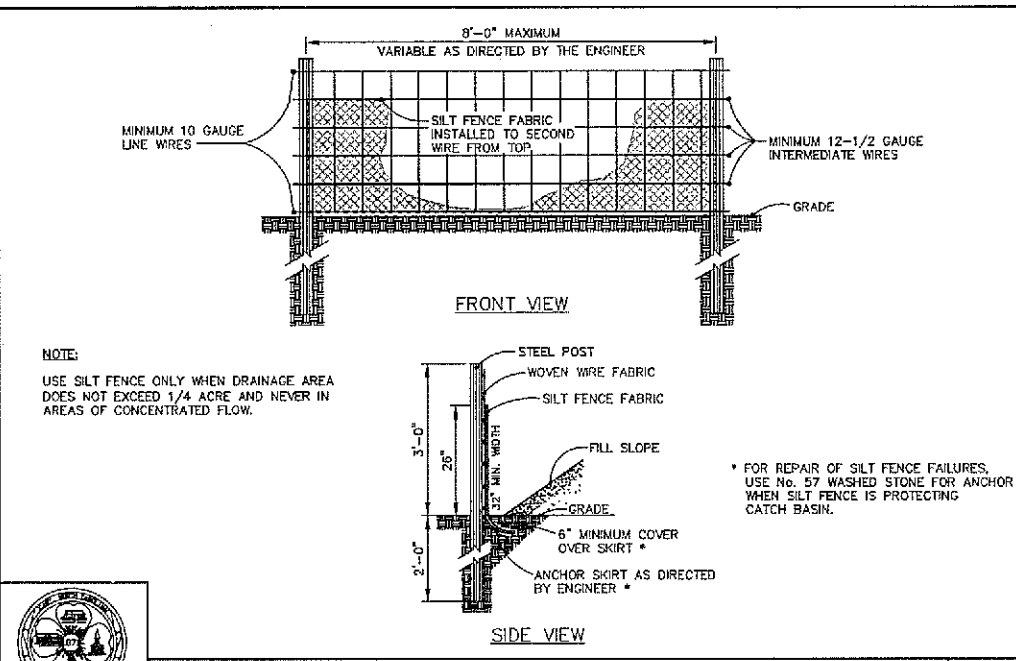
STANDARD TRENCH AND PAVEMENT REPAIR SECTIONS
 DETAIL No. 05000.01
 SHEET 1 OF 1
 EFFECTIVE 07/01/04



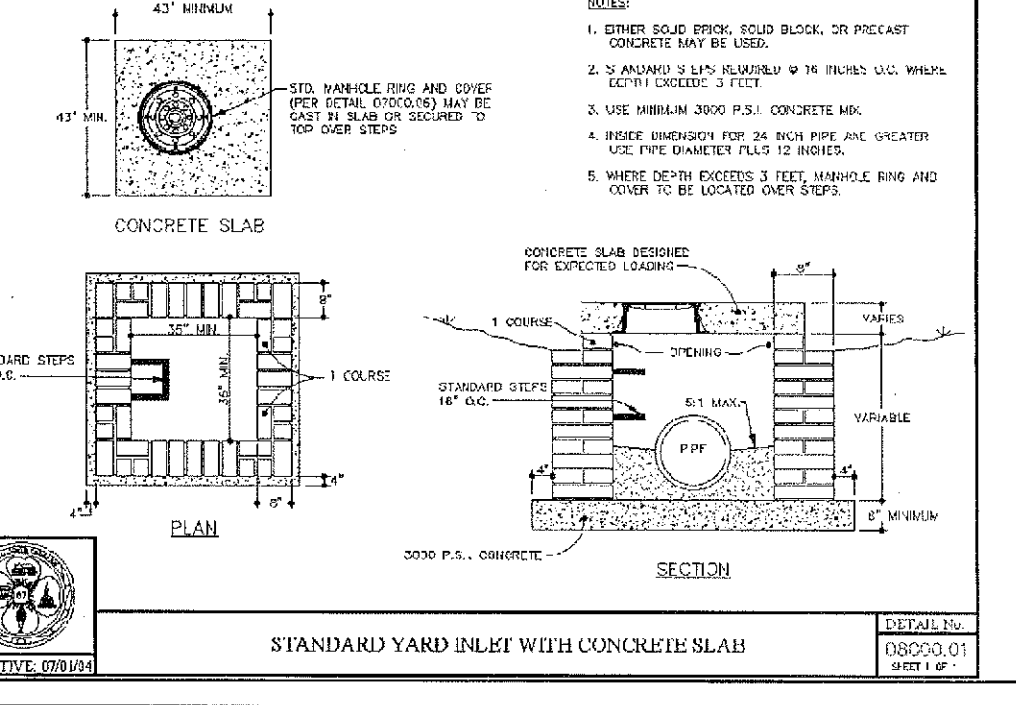
STANDARD SANITARY SEWER TAP AND SERVICE
 DETAIL No. 07000.10
 SHEET 1 OF 2
 EFFECTIVE 07/01/04



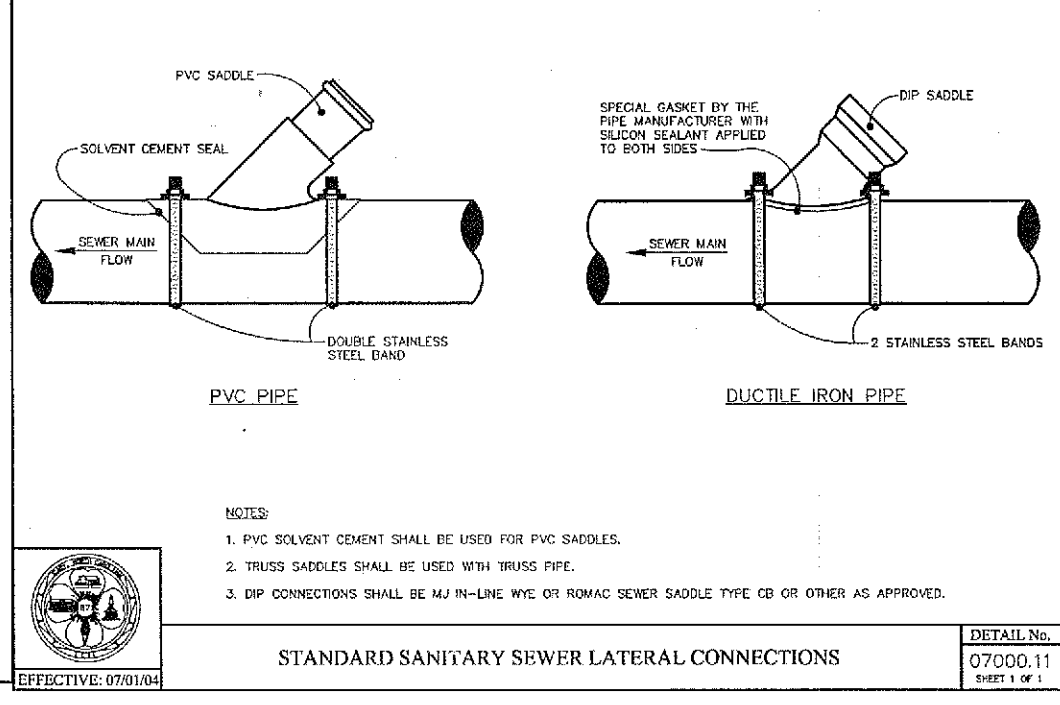
STANDARD WHEELCHAIR RAMP
 DETAIL No. 03000.14
 SHEET 1 OF 3
 EFFECTIVE 07/01/04



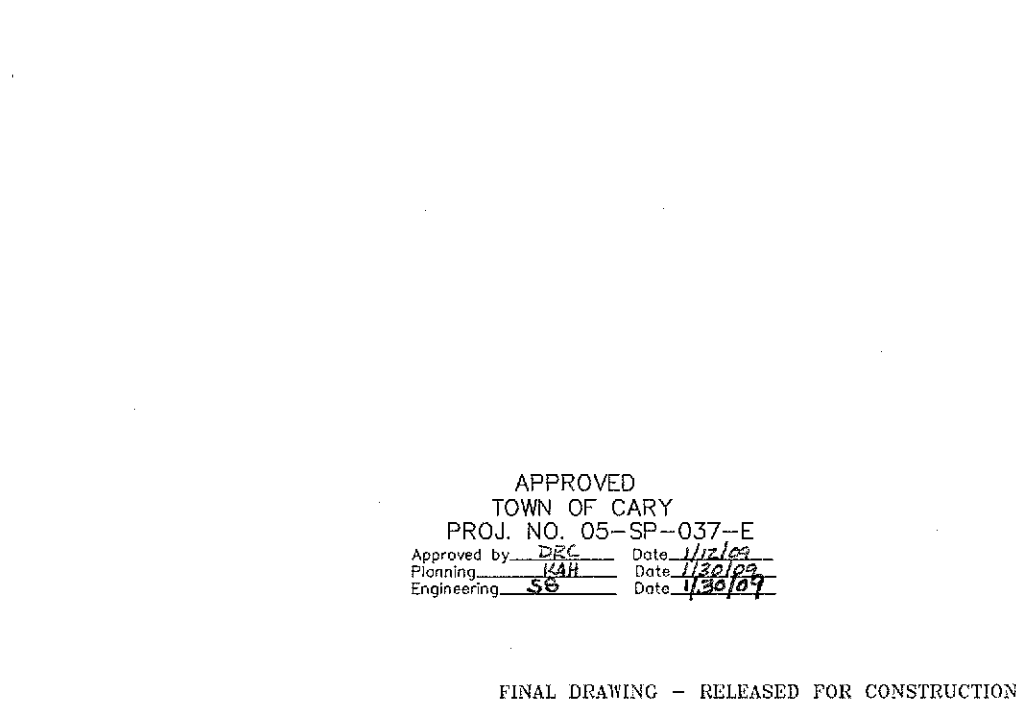
STANDARD TEMPORARY SILT FENCE
 DETAIL No. 04000.01
 SHEET 1 OF 1
 EFFECTIVE 07/01/04



STANDARD YARD INLET WITH CONCRETE SLAB
 DETAIL No. 08000.01
 SHEET 1 OF 1
 EFFECTIVE 07/01/04



STANDARD SANITARY SEWER LATERAL CONNECTIONS
 DETAIL No. 07000.11
 SHEET 1 OF 1
 EFFECTIVE 07/01/04



STANDARD SANITARY SEWER TAP AND SERVICE
 DETAIL No. 07000.10
 SHEET 2 OF 2
 EFFECTIVE 07/01/04

THE JOHN R. McADAMS COMPANY, INC.
 ENGINEERS • PLANNERS • SURVEYORS • ENVIRONMENTAL
 RESEARCH TRIANGLE PARK • CHARLOTTE • WILMINGTON
 910-753-5616 • www.johnr-mcAdams.com

REVISIONS:

OWNER:
CAMDEN TOWNHOMES @ CARY PARK-POOL HOUSE
 221 DOVE COTTAGE LANE
 CARY, NORTH CAROLINA

DETAILS

PROJECT No. GWH-04000
 FILENAME: GWH04000-01
 DESIGNED BY: RJD
 DRAWN BY: KAM
 SCALE: N.T.S.
 DATE: 01-27-09
 Engineering: SB Date: 1/30/09

APPROVED
 TOWN OF CARY
 PROJ. NO. 05-SP-037-E
 Approved by: [Signature] Date: 1/16/09
 Planning: [Signature] Date: 1/16/09
 Engineering: SB Date: 1/30/09

SHEET No. **D-1**

McADAMS

X:\Project\GWH04000-01\Construction\Drawings\Current\Drawings\Phase 2\Pool House\GWH04000-POOL-D1.dwg, 1/26/2009 3:31:42 PM, Jlavropet, 1:1