

**RIGHT OF WAY RADII**  
At all Intx. Into all Cul-De-Sacs

**PAVEMENT RADII**  
R=25' At all Intx. Into Cul-De-Sacs  
R=30' R=35'

Quantities and placement of materials may change to meet or better conform to field conditions as per instructions of engineer.

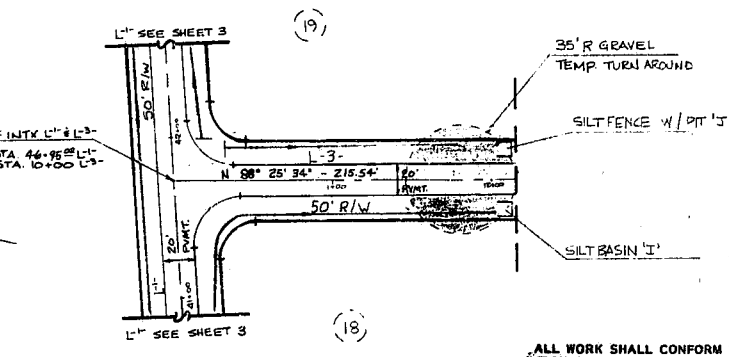
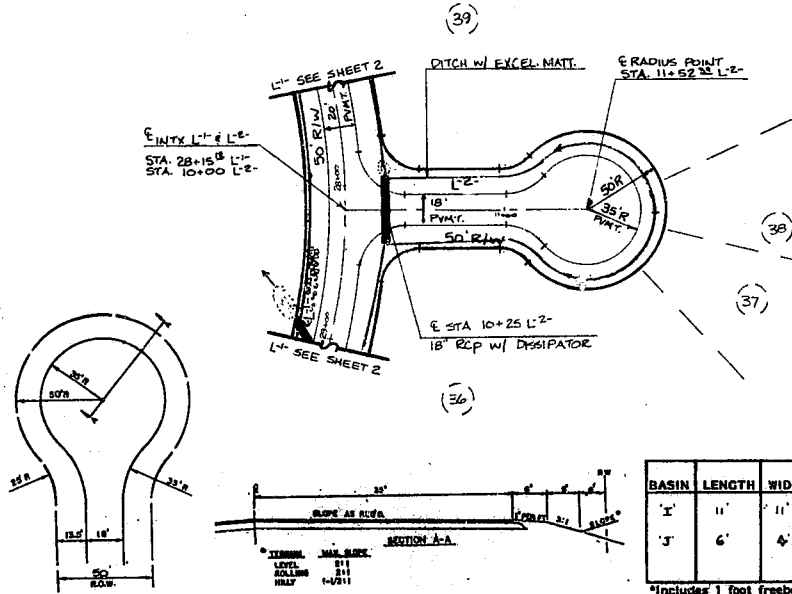
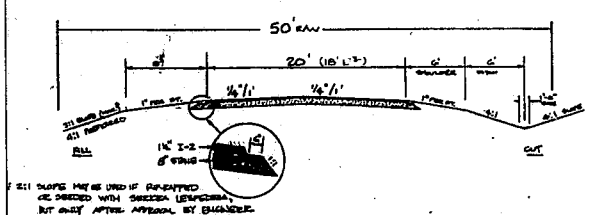
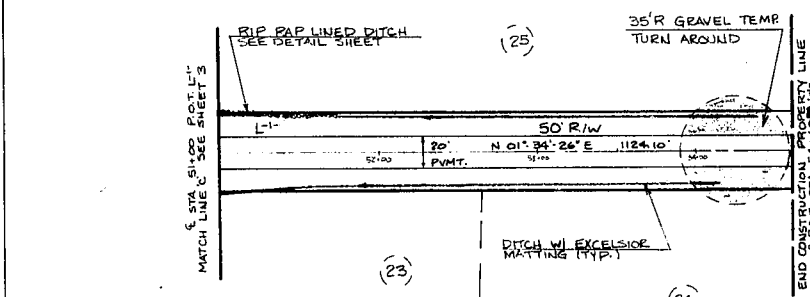
**LOCATION AND COURSE OF DRAINAGE EASEMENTS**  
MAY VARY DUE TO FIELD CONDITIONS.

**RIP RAP SCHEDULE**

FROM STA	TO STA
51+75 LEFT SIDE L <sup>1</sup>	51+75 LEFT SIDE L <sup>1</sup>
12+49 LEFT SIDE L <sup>2</sup>	12+49 LEFT SIDE L <sup>2</sup>

**EXCISELOR MATTING SCHEDULE**

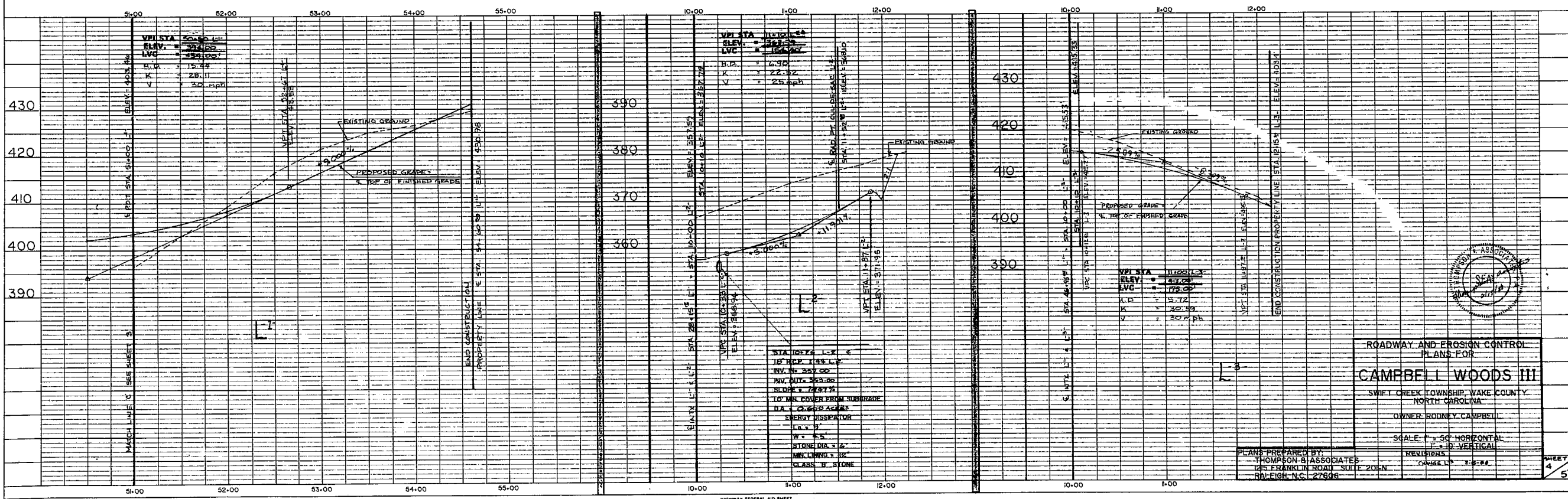
FROM STA	TO STA
54+39 LEFT SIDE L <sup>1</sup>	51+75 LEFT SIDE L <sup>1</sup>
54+17 LEFT SIDE L <sup>1</sup>	51+75 LEFT SIDE L <sup>1</sup>
11+79 LEFT SIDE L <sup>2</sup>	12+49 LEFT SIDE L <sup>2</sup>
11+97 LEFT SIDE L <sup>2</sup>	12+49 LEFT SIDE L <sup>2</sup>
ALL OF CUL-DE-SAC L <sup>1</sup> BOTH SIDES	



BASIN	LENGTH	WIDTH	DEPTH	WEIR LENGTH	EFFECTIVE STORAGE	CLEANED EVERY	DRAINAGE AREA
I	11'	11'	5'	10'	242 cf	3 mo	0.263 Ac.
J	6'	4'	3'	-	72 cf	3 mo	0.148 Ac.

\*Includes 1 foot freeboard

VELOCITY DISSIPATOR	LENGTH	WIDTH	STONE THICKNESS	STONE DIAMETER	V <sub>10</sub>	Q <sub>10</sub>
18" RCP @ STA 10+25 L <sup>2</sup>	9'	4.5'	12"	6"	10.00 fps	1,789 cfs



ROADWAY AND EROSION CONTROL PLANS FOR  
**CAMPBELL WOODS III**  
SWIFT CREEK TOWNSHIP, WAKE COUNTY, NORTH CAROLINA  
OWNER: RODNEY CAMPBELL  
SCALE: 1" = 50' HORIZONTAL  
1" = 10' VERTICAL

PLANS PREPARED BY:  
THOMPSON & ASSOCIATES  
125 FRANKLIN ROAD, SUITE 201N  
RALEIGH, N.C. 27608

**PLAN**  
DATE: \_\_\_\_\_  
BY: \_\_\_\_\_  
CHECKED: \_\_\_\_\_  
APPROVED: \_\_\_\_\_  
NOTE BOOK NO. \_\_\_\_\_  
SHEET NO. \_\_\_\_\_

**PROFILE**  
DATE: \_\_\_\_\_  
BY: \_\_\_\_\_  
CHECKED: \_\_\_\_\_  
APPROVED: \_\_\_\_\_  
NOTE BOOK NO. \_\_\_\_\_  
SHEET NO. \_\_\_\_\_