

EXCELSIOR MATTING SCHEDULE	
STA 29+68 R.S. L ¹	INV. IN (2) 60' RCP L ¹
STA 29+30 L.S. L ¹	STA 29+77 L.S. L ¹
STA 33+91 L.S. L ¹	INV. IN 30' RCP L.S. L ¹
STA 33+91 R.S. L ¹	INV. OUT 30' RCP L.S. L ¹

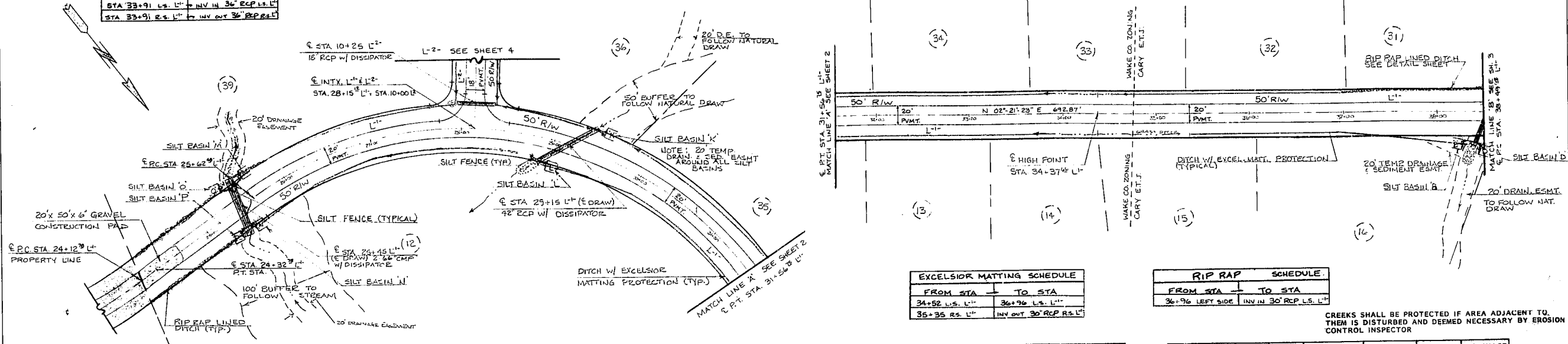
RIP RAP SCHEDULE	
STA 29+77 L.S. L ¹	INV. OUT (2) 60' RCP L ¹
STA 24+12 R.S. L ¹	INV. IN (2) 60' RCP L ¹

RIGHT OF WAY RADII
At all Intx. Into all Cul-De-Sacs R=25'
At all Intx. Into Cul-De-Sacs R=35'

PAVEMENT RADII
At all Intx. Into Cul-De-Sacs R=25'
At all Intx. Into Cul-De-Sacs R=35'

LOCATION AND COURSE OF DRAINAGE EASEMENTS
MAY VARY DUE TO FIELD CONDITIONS.

Quantities and placement of materials may change to meet or better conform to field conditions as per instructions of engineer.



P.I. STATION 24+22.83 L¹
 $\Delta = 91^{\circ}28'43''$
 $R = 775.00'$
 $L = 10.00'$
 $T = 10.00'$
 $S_0 = NONE$

P.I. STATION 29+42.33 L¹
 $\Delta = 90^{\circ}47'52''$
 $R = 375.00'$
 $L = 594.27'$
 $T = 380.26'$
 $S_0 = 2.02\%$

ALL WORK SHALL CONFORM TO TOWN OF CARY AND/OR NC DOT STANDARDS AND SPECIFICATIONS WHERE APPLICABLE

EXCELSIOR MATTING SCHEDULE	
FROM STA	TO STA
34+52 L.S. L ¹	36+76 L.S. L ¹
35+35 R.S. L ¹	INV. OUT 30' RCP R.S. L ¹

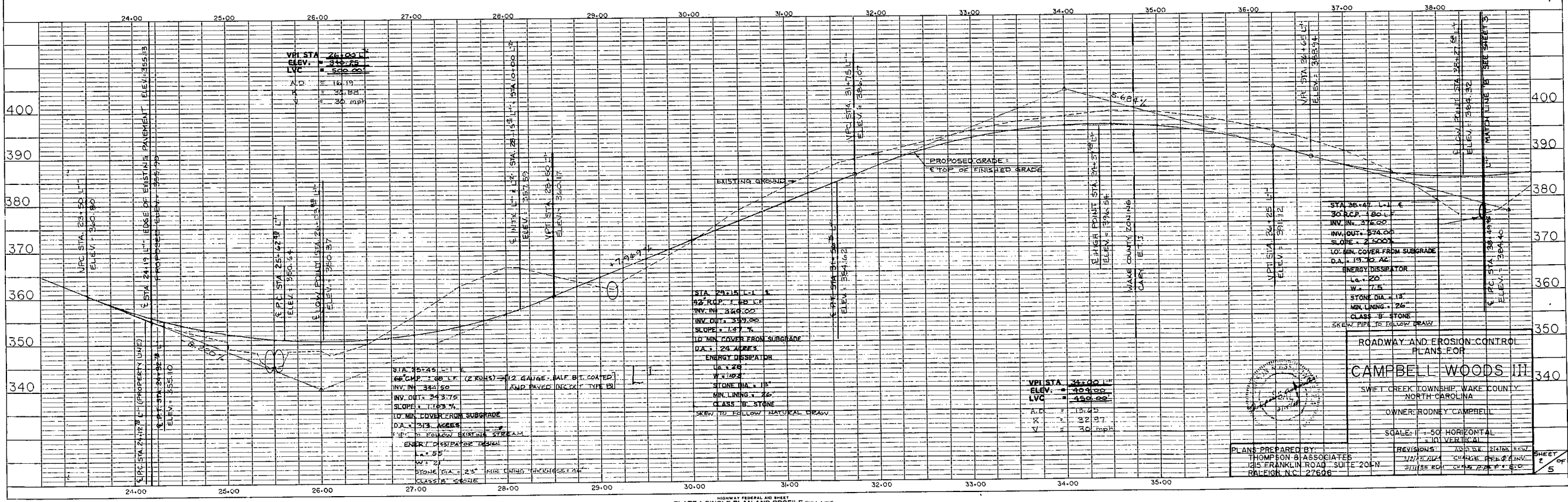
RIP RAP SCHEDULE	
FROM STA	TO STA
34+96 LEFT SIDE	INV. IN 30' RCP L.S. L ¹

VELOCITY DISSIPATOR	LENGTH	WIDTH	STONE THICKNESS	STONE DIAMETER	V ₁₀	Q ₁₀
30' RCP @ STA 29+15 L ¹	24'	9'	26"	15"	12.15	25.73 cfs
(2) 60' C.M.P. @ STA 25+40 L ¹	55'	21'	46"	23"	9.85	249.00 cfs
18' RCP @ STA 10+26 L ¹	9.0'	4.5'	12"	6"	10.00	1.789 cfs
30' RCP @ STA 38+47	20'	7.5'	26"	15"	12.64	20.75 cfs

BASIN	LENGTH	WIDTH	DEPTH	WEIR LENGTH	EFFECTIVE STORAGE	CLEANED EVERY	DRAINAGE AREA
30' RCP	24'	9'	18"	10'	242 CF	3 mo	0.470 AC.
60' C.M.P.	55'	21'	18"	10'	242 CF	3 mo	0.300 AC.
18' RCP	9.0'	4.5'	12"	10'	242 CF	3 mo	0.208 AC.
30' RCP	20'	7.5'	18"	10'	242 CF	3 mo	0.400 AC.
30' RCP	20'	7.5'	18"	10'	242 CF	12 mo	0.280 AC.
30' RCP	20'	7.5'	18"	10'	242 CF	12 mo	0.470 AC.

*Includes 1 foot freeboard

CREEKS SHALL BE PROTECTED IF AREA ADJACENT TO THEM IS DISTURBED AND DEEMED NECESSARY BY EROSION CONTROL INSPECTOR



PLAN
 DRAWN BY: []
 CHECKED BY: []
 DATE: []
 NOTE BOOK: []
 NO. OF SHEETS: []
 SHEET NO.: []

PROFILE
 DRAWN BY: []
 CHECKED BY: []
 DATE: []
 NOTE BOOK: []
 NO. OF SHEETS: []
 SHEET NO.: []

ROADWAY AND EROSION CONTROL PLANS FOR CAMPBELL WOODS III
 SWIFT CREEK TOWNSHIP, WAKE COUNTY, NORTH CAROLINA
 OWNER: RODNEY CAMPBELL
 SCALE: 1" = 50' HORIZONTAL, 1" = 10' VERTICAL
 PLANS PREPARED BY: THOMPSON B ASSOCIATES
 12722 W. CHURCH STREET, SUITE 201N, RALEIGH, NC, 27606
 REVISIONS: []
 SHEET 2 OF 5