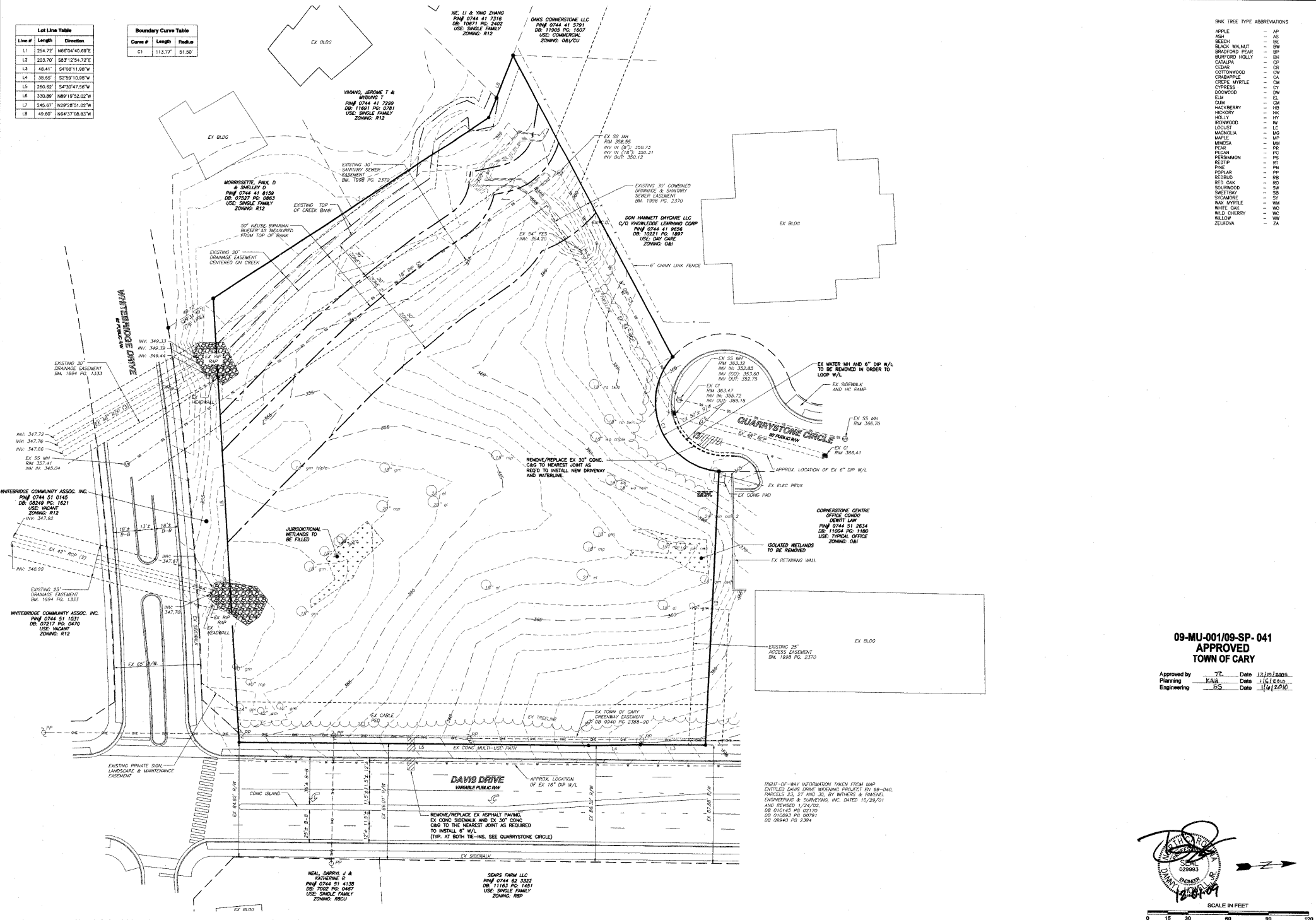


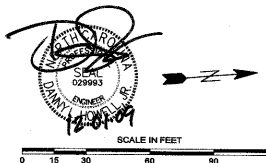
Line #	Length	Direction
L1	254.72	N80°04'40.69"E
L2	203.70	S83°12'54.72"E
L3	48.41	S4°06'11.98"W
L4	38.60	S2°59'10.89"W
L5	260.62	S42°30'41.88"W
L6	330.89	N89°15'52.02"W
L7	245.67	N29°29'51.02"W
L8	49.60	N64°37'08.81"W

Curve #	Length	Radius
C1	113.77	51.50



09-MU-001/09-SP-041
APPROVED
TOWN OF CARY

Approved by TT Date 12/19/2009
 Planning KAL Date 11/16/09
 Engineering SS Date 11/16/09



SCALE IN FEET
 0 15 30 60 90 120

RIGHT-OF-WAY INFORMATION TAKEN FROM MAP ENTITLED DAVIS DRIVE WORKING PROJECT ID# 89-040, PARCELS 23, 27 AND 30, BY WITHERS & PARKER ENGINEERING & SURVEYING, INC. DATED 10/29/01 AND REVISED 1/24/02. DB: 010143 PG: 02170. DB: 010593 PG: 00761. DB: 099442 PG: 2304.



BASS NIXON & KENNEDY, INC.
CONSULTING ENGINEERS
 1810 CHARLES HILL ROAD, SUITE 200, WALKER, NC 27887
 319 HERITAGE TRADE DRIVE, SUITE 101, WAKE FOREST, NC 27787
 TEL: (919) 551-1810 FAX: (919) 551-1811
 CERTIFICATION NUMBERS: NCEBLS (CA-110), NCEBA (CA087)

NO.	DATE	DESCRIPTION	BY	REVISIONS
1	11/04/09	PER T.O.C. COMMENTS	RAB	
2	12/04/09	PER T.O.C. COMMENTS	RAB	
3	12/04/09	PER T.O.C. COMMENTS	RAB	

DATE	BY	DESCRIPTION
08-12-2009	RAB	EXISTING CONDITIONS & DEMOLITIONS PLAN
09-0007	DATE	DATE

CAROLINA LEGACY
 125/151 QUARRYSTONE CIRCLE
 TOWN OF CARY, WAKE COUNTY, NORTH CAROLINA

SHEET **C1.0**
 2 OF 14

NOT RELEASED FOR CONSTRUCTION OR BID SOLICITATION

09-MU-001/09-SP-041