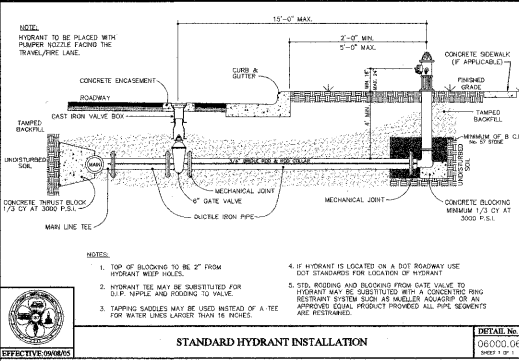


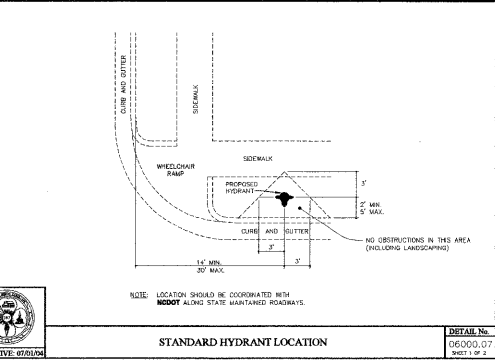
STANDARD 1.5' x 2' METER INSTALLATION & VAULT

DETAIL NO. 06000.02 SHEET 1 OF 1



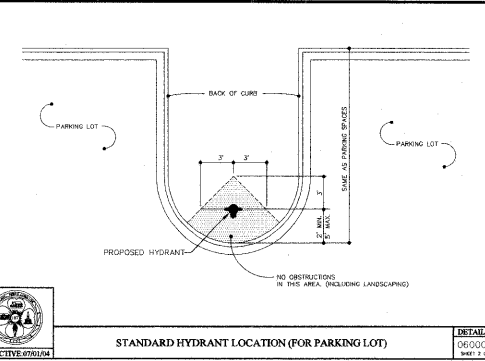
STANDARD HYDRANT INSTALLATION

DETAIL NO. 06000.06 SHEET 1 OF 1



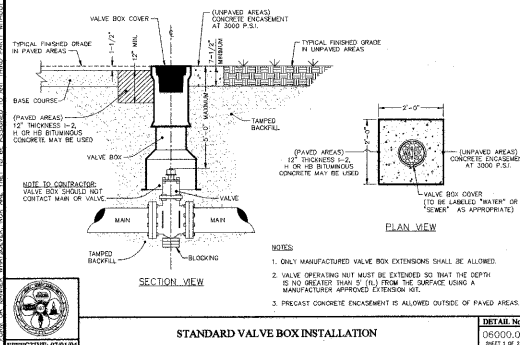
STANDARD HYDRANT LOCATION

DETAIL NO. 06000.07 SHEET 1 OF 1



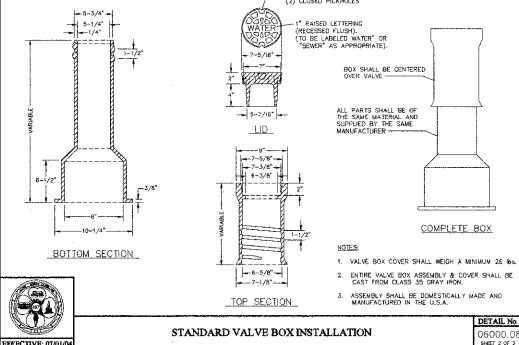
STANDARD HYDRANT LOCATION (FOR PARKING LOT)

DETAIL NO. 06000.07 SHEET 1 OF 1



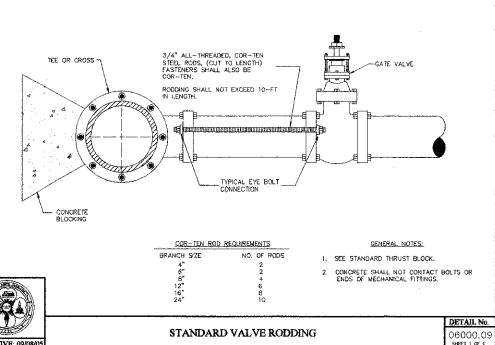
STANDARD VALVE BOX INSTALLATION

DETAIL NO. 06000.03 SHEET 1 OF 1



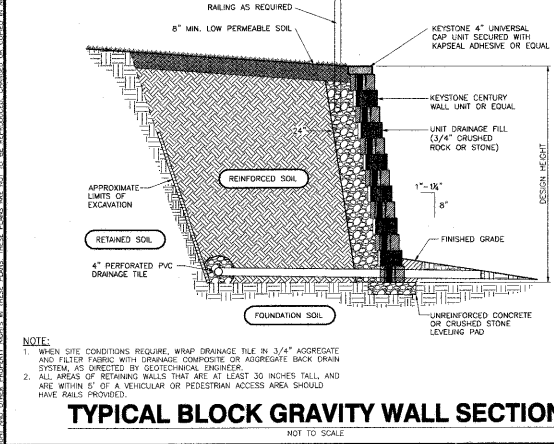
STANDARD VALVE BOX INSTALLATION

DETAIL NO. 06000.05 SHEET 2 OF 2



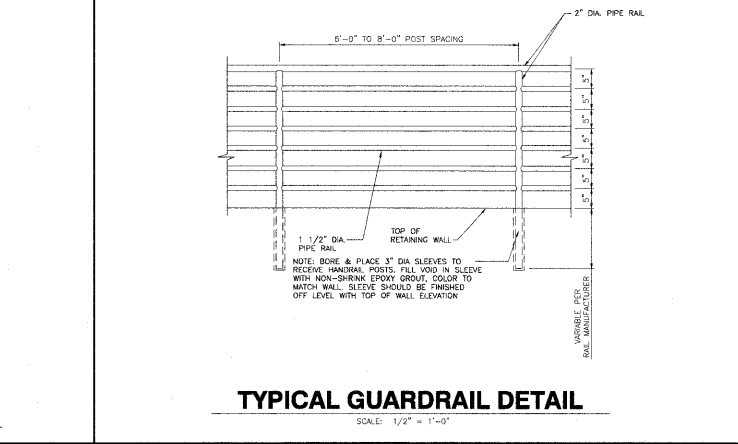
STANDARD VALVE RODDING

DETAIL NO. 06000.09 SHEET 1 OF 1



TYPICAL BLOCK GRAVITY WALL SECTION

NOT TO SCALE



TYPICAL GUARDRAIL DETAIL

SCALE: 1/2" = 1'-0"

BNK

BASS, NIXON & KENNEDY, INC.
CONSULTING ENGINEERS
3819 HERITAGE TRADE DRIVE, SUITE 201, WAKE FOREST, NC 27887
TEL: (919) 552-1100 FAX: (919) 552-1100

NO.	DATE	DESCRIPTION	BY	REVISIONS
1	10-01-09	PER T.O.C. COMMENTS	BA	
2	11-04-09	PER T.O.C. COMMENTS	BA	
3	12-01-09	PER T.O.C. COMMENTS	BA	

CAROLINA LEGACY
125/151 QUARRYSTONE CIRCLE
TOWN OF CARY, WAKE COUNTY, NORTH CAROLINA

09-MU-001/09-SP-041
APPROVED
TOWN OF CARY

Approved by: Y.C. Date: 12/15/2009
Planning: BAH Date: 1/16/2010
Engineering: SS Date: 1/16/2010

IT'S THE LAW!
AS OF JANUARY 1, 1996, NORTH CAROLINA STATE LAW REQUIRES ANYONE EXCAVATING WITH MECHANICAL EQUIPMENT ON HIGHWAY RIGHTS-OF-WAY, PRIVATE UTILITY EASEMENTS, OR PUBLIC SPACES TO NOTIFY ALL UTILITIES TWO (2) WORKING DAYS PRIOR TO DIGGING.

NOTES:
ALL PIPE LENGTHS ARE MEASURED FROM CENTERLINE OF STRUCTURE TO CENTER OF STRUCTURE.
CONTACT NORTH CAROLINA ONE-CALL CENTER PRIOR TO ANY CONSTRUCTION. (800) 632-4349
ALL STRUCTURE OFFSETS ARE MEASURED FROM CL OF ROAD TO CENTER OF STRUCTURE.

NOTE: ALL CONSTRUCTION SHALL BE IN ACCORDANCE WITH THE TOWN OF CARY AND THE STATE OF NORTH CAROLINA STANDARDS & SPECIFICATIONS AND DETAILS.



SHEET **C5-2** OF 14