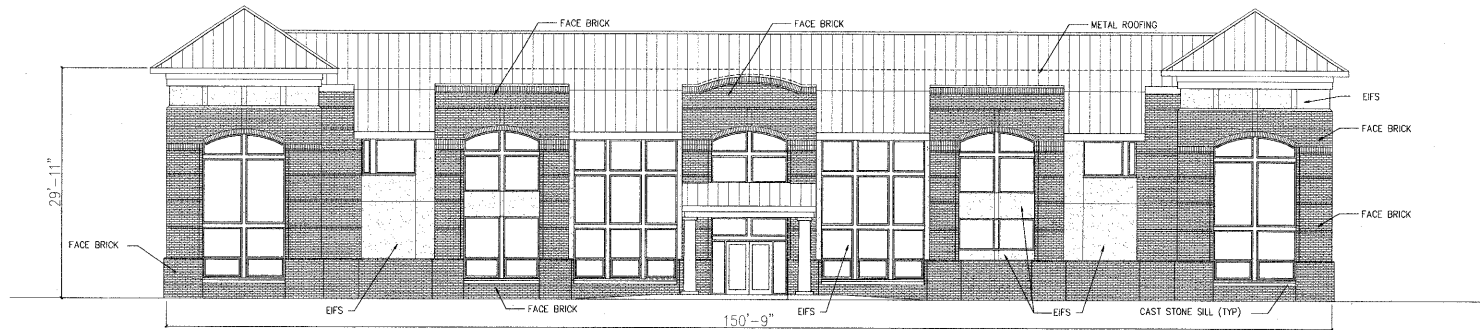


# 1: MATERIALS OVERLAY

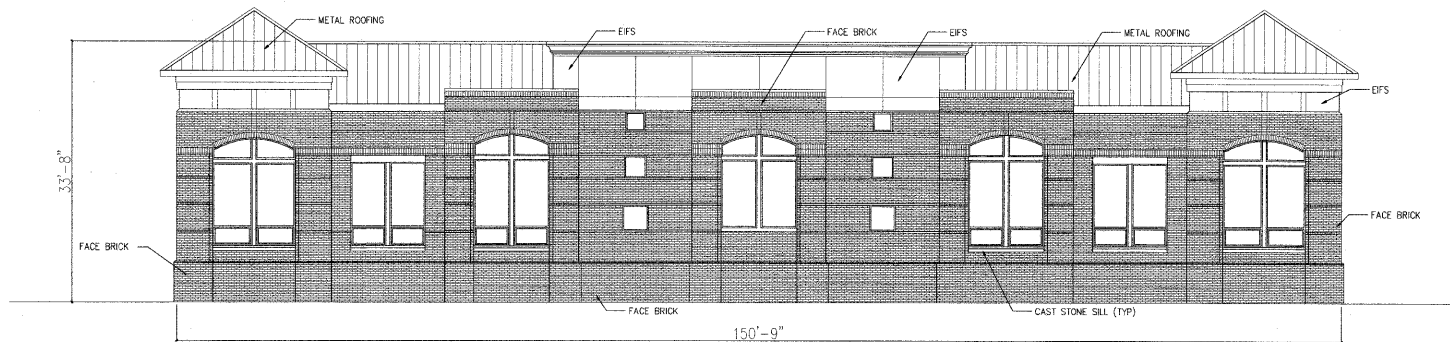
09-MU-001/09-SP-041  
 APPROVED  
 TOWN OF CARY

Approved by: TC Date: 12/15/2009  
 Planning: MAN Date: 1/6/2010  
 Engineering: SS Date: 1/6/2010



TOTAL FACADE AREA: 29'-11" X 150'-9" = 4,510 SF  
 AREA OF WINDOWS & DOORS: -1,350 SF  
 AREA OF METAL ROOFING: -526 SF  
 2,634 SF

REQUIRED BRICK/STONE/CAST CONCRETE: COMMERCIAL AND MIXED-USES (X .75) = 1,976 SF MINIMUM  
 PROVIDED BRICK/STONE/CAST CONCRETE: COMMERCIAL AND MIXED-USES = 2,016 SF



TOTAL FACADE AREA: 33'-8" X 151'-5" = 5,076 SF  
 AREA OF WINDOWS & DOORS: -961 SF  
 AREA OF METAL ROOFING: -515 SF  
 3,600 SF

REAR ELEVATION  
 SCALE: 1/8"=1'-0"

REQUIRED BRICK/STONE/CAST CONCRETE: COMMERCIAL AND MIXED-USES (X .75) = 2,700 SF MINIMUM  
 PROVIDED BRICK/STONE/CAST CONCRETE: COMMERCIAL AND MIXED-USES = 2,808 SF