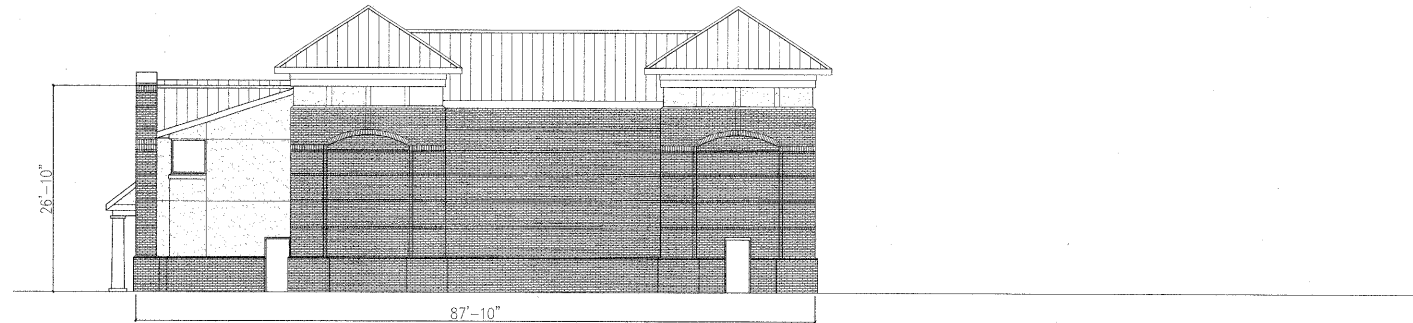


1: MATERIALS OVERLAY

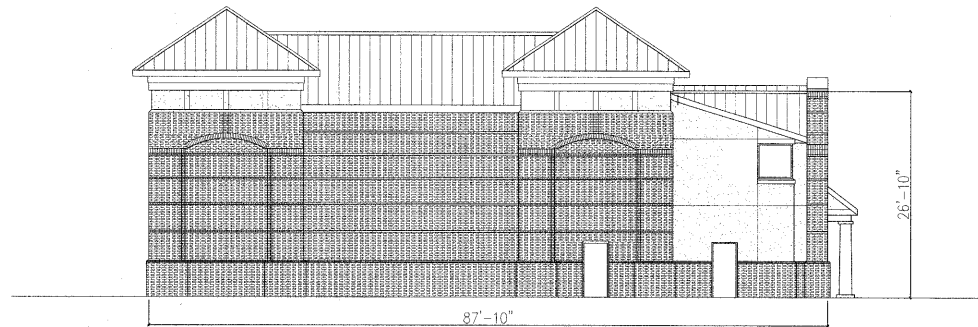
09-MU-001/09-SP-041
 APPROVED
 TOWN OF CARY

Approved by: JC Date: 11/16/2010
 Planning: KAH Date: 11/16/2010
 Engineering: SS Date: 11/16/2010



TOTAL FACADE AREA:	2,357 SF
AREA OF WINDOWS & DOORS:	-69 SF
AREA OF METAL ROOFING:	-55 SF
	2,233 SF

REQUIRED BRICK/STONE/CAST CONCRETE: COMMERCIAL AND MIXED-USES (X .75)= 1,675 SF MINIMUM
 PROVIDED BRICK/STONE/CAST CONCRETE: COMMERCIAL AND MIXED-USES = 1,806 SF



TOTAL FACADE AREA:	2,357 SF
AREA OF WINDOWS & DOORS:	-69 SF
AREA OF METAL ROOFING:	-55 SF
	2,233 SF

REQUIRED BRICK/STONE/CAST CONCRETE: COMMERCIAL AND MIXED-USES (X .75)= 1,675 SF MINIMUM
 PROVIDED BRICK/STONE/CAST CONCRETE: COMMERCIAL AND MIXED-USES = 1,806 SF

LEFT ELEVATION
 SCALE: 1/8"=1'-0"

LEFT ELEVATION
 SCALE: 1/8"=1'-0"

CAROLINA LEGACY ALL-STARS BUILDING

CAROLINA LEGACY ALL-STARS BUILDING
 125 QUARRYSTONE CIRCLE
 CARY, NORTH CAROLINA