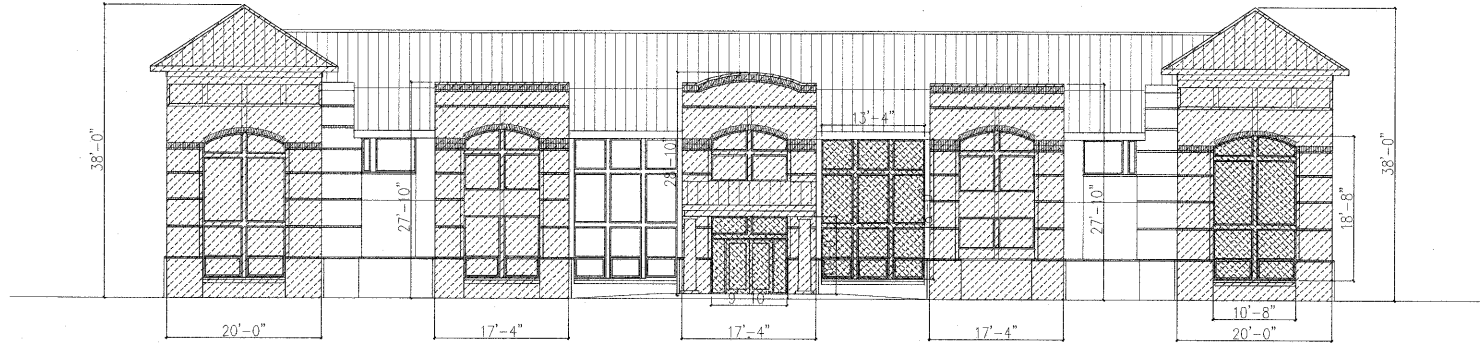


4: PROPORTION OVERLAY

09-MU-001/09-SP-041
APPROVED
TOWN OF CARY

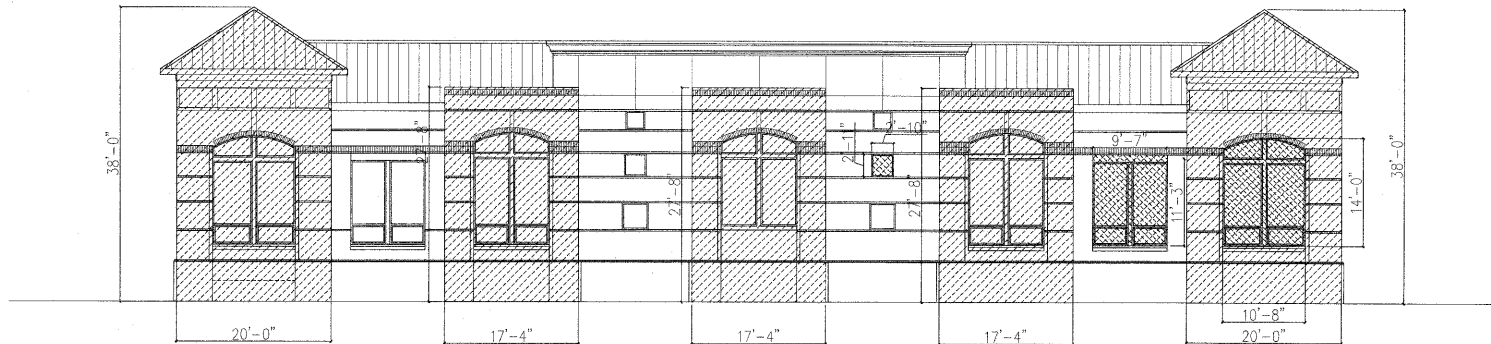
Approved by: [Signature] Date: 12/10/2009
Planning: [Signature] Date: 1/15/2010
Engineering: [Signature] Date: 1/16/2010



FRONT ELEVATION
SCALE: 1/8"=1'-0"

BUILDING SEGMENT RATIO 1:	HEIGHT: 38'-0"	WIDTH: 20'-0"
BUILDING SEGMENT RATIO 2:	HEIGHT: 27'-10"	WIDTH: 17'-4"
BUILDING SEGMENT RATIO 3:	HEIGHT: 28'-10"	WIDTH: 17'-4"

WINDOW & DOOR RATIO 1:	HEIGHT: 9'-10"	WIDTH: 10'-0"
WINDOW & DOOR RATIO 2:	HEIGHT: 8'-0"	WIDTH: 13'-4"
WINDOW & DOOR RATIO 3:	HEIGHT: 10'-8"	WIDTH: 18'-8"



REAR ELEVATION
SCALE: 1/8"=1'-0"

BUILDING SEGMENT RATIO 1:	HEIGHT: 38'-0"	WIDTH: 20'-0"
BUILDING SEGMENT RATIO 2:	HEIGHT: 27'-18"	WIDTH: 17'-4"
BUILDING SEGMENT RATIO 3:	HEIGHT: 27'-8"	WIDTH: 17'-4"

WINDOW & DOOR RATIO 1:	HEIGHT: 2'-11"	WIDTH: 2'-10"
WINDOW & DOOR RATIO 2:	HEIGHT: 11'-3"	WIDTH: 9'-7"
WINDOW & DOOR RATIO 3:	HEIGHT: 14'-0"	WIDTH: 10'-8"