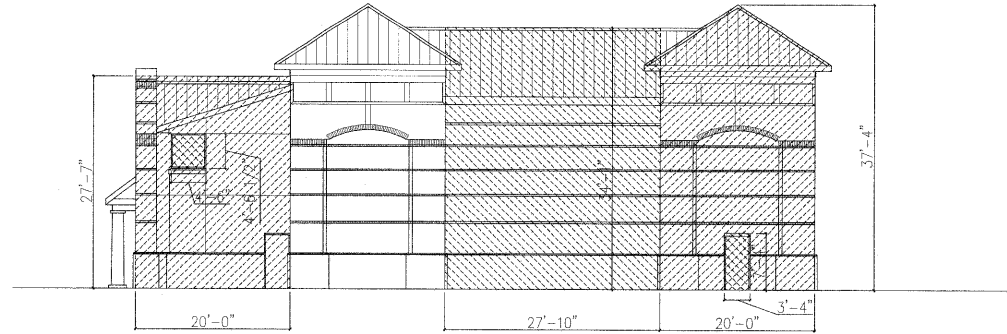


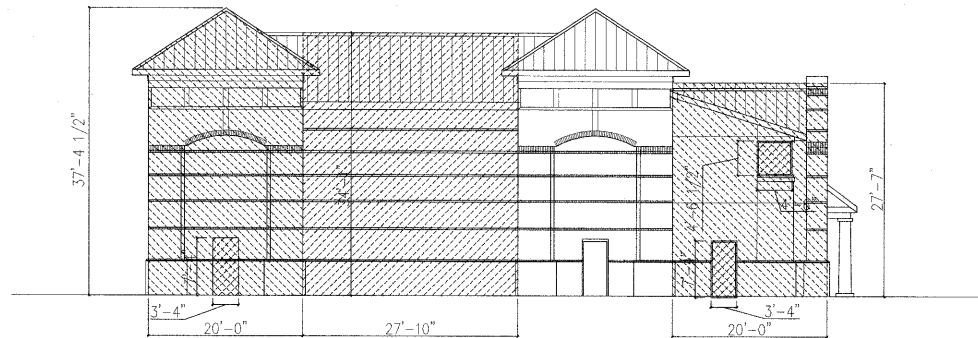
# 4: PROPORTION OVERLAY

09-MU-001/09-SP-041  
 APPROVED  
 TOWN OF CARY

Approved by: TC Date: 12/16/2009  
 Planning: WJH Date: 1/16/2010  
 Engineering: SC Date: 1/16/2010



BUILDING SEGMENT RATIO 1:	HEIGHT: 27'-7"	WIDTH: 20'-0"	WINDOW & DOOR RATIO 1:	HEIGHT: 4'-6"	WIDTH: 4'-6 1/2"
BUILDING SEGMENT RATIO 2:	HEIGHT: 27'-10"	WIDTH: 34'-1"	WINDOW & DOOR RATIO 2:	HEIGHT: 7'-4"	WIDTH: 3'-4"
BUILDING SEGMENT RATIO 3:	HEIGHT: 37'-4"	WIDTH: 20'-0"			



BUILDING SEGMENT RATIO 1:	HEIGHT: 27'-7"	WIDTH: 20'-0"	WINDOW & DOOR RATIO 1:	HEIGHT: 4'-6"	WIDTH: 4'-6 1/2"
BUILDING SEGMENT RATIO 2:	HEIGHT: 27'-10"	WIDTH: 34'-1"	WINDOW & DOOR RATIO 2:	HEIGHT: 7'-4"	WIDTH: 3'-4"
BUILDING SEGMENT RATIO 3:	HEIGHT: 37'-4"	WIDTH: 20'-0"			

LEFT ELEVATION  
 SCALE: 1/8"=1'-0"

## CAROLINA LEGACY ALL-STARS BUILDING

**CAROLINA LEGACY ALL-STARS BUILDING**  
 125 QUARRYSTONE CIRCLE  
 CARY, NORTH CAROLINA