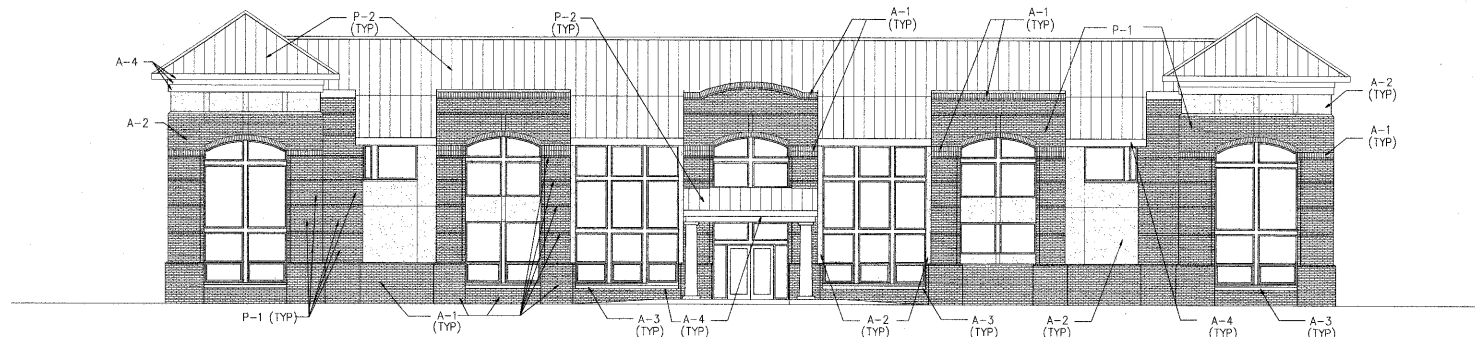


# 9: COLOR OVERLAY

09-MU-001/09-SP-041

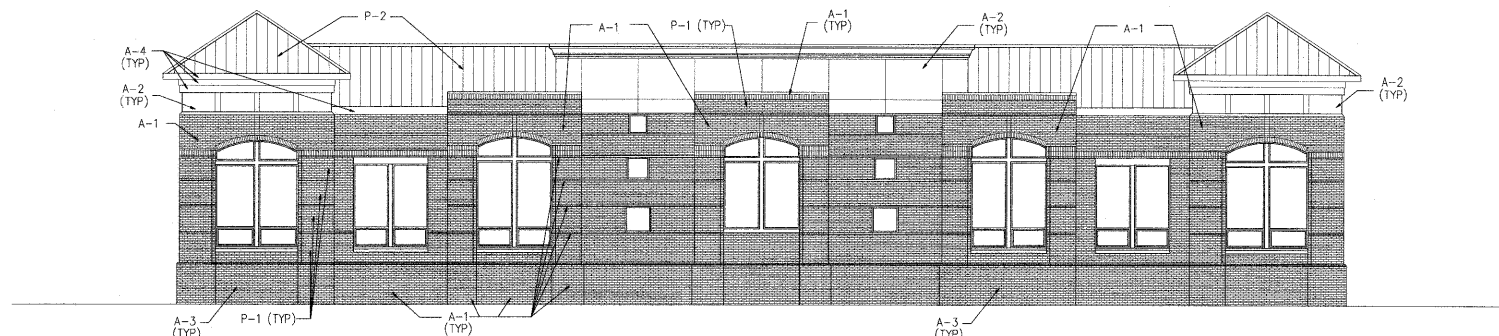
APPROVED  
TOWN OF CARY

Approved by: TCC Date: 12/10/2009  
 Planning: KAH Date: 1/16/2010  
 Engineering: SS Date: 1/16/2010



- PRIMARY COLOR (P-1): RED BRICK (RED RANGE WIRECUT BY BORAL BRICK)
- PRIMARY COLOR (P-2): CHARCOAL GRAY METAL ROOFING
- PRIMARY COLOR (A-1): MEDIUM BROWN BRICK (CRIMSON DARK VELOUR BY CAROLINA CERAMICS)
- PRIMARY COLOR (A-2): LIGHT TAN EIFS (SAHARA FINISH / ALMOND BY SENERGY)
- PRIMARY COLOR (A-3): LIGHT TAN CAST STONE
- PRIMARY COLOR (A-4): WHITE WOOD FASCIA & TRIM

FRONT ELEVATION  
SCALE: 1/8"=1'-0"



- PRIMARY COLOR (P-1): RED BRICK (RED RANGE WIRECUT BY BORAL BRICK)
- PRIMARY COLOR (P-2): CHARCOAL GRAY METAL ROOFING
- PRIMARY COLOR (A-1): MEDIUM BROWN BRICK (CRIMSON DARK VELOUR BY CAROLINA CERAMICS)
- PRIMARY COLOR (A-2): LIGHT TAN EIFS (SAHARA FINISH / ALMOND BY SENERGY)
- PRIMARY COLOR (A-3): LIGHT TAN CAST STONE
- PRIMARY COLOR (A-4): WHITE WOOD FASCIA & TRIM

REAR ELEVATION  
SCALE: 1/8"=1'-0"



## CAROLINA LEGACY ALL-STARS BUILDING

CAROLINA LEGACY ALL-STARS BUILDING  
 125 QUARRYSTONE CIRCLE  
 CARY, NORTH CAROLINA