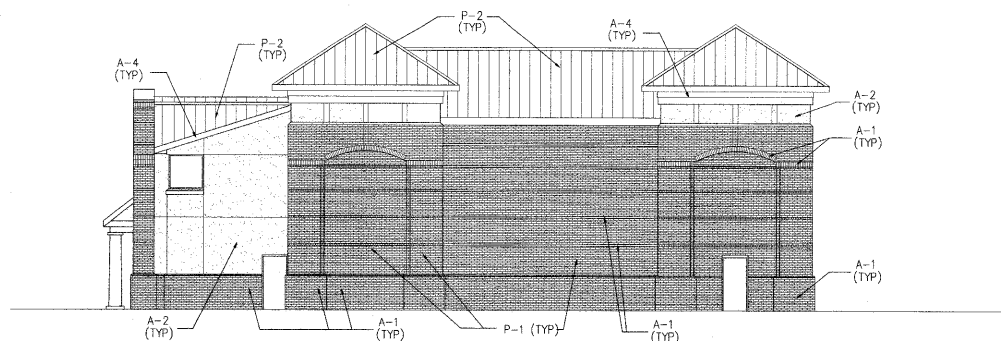


9: COLOR OVERLAY

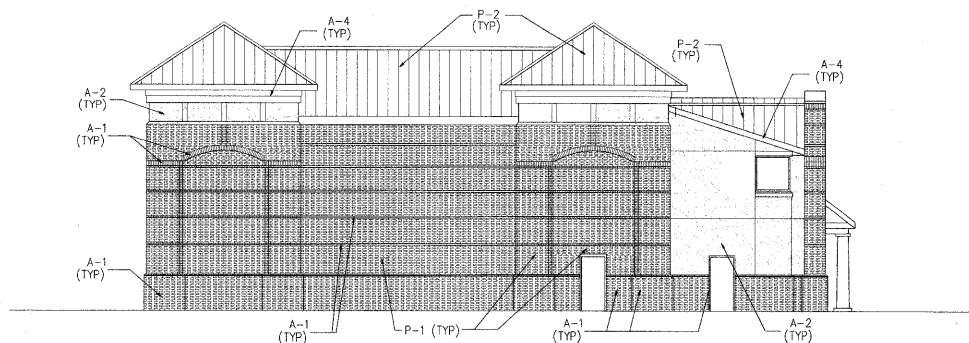
09-MU-001/09-SP- 041

APPROVED
TOWN OF CARY

Approved by	TY	Date	12/09/2005
Planning	KAL	Date	1/6/2010
Engineering	SS	Date	1/4/2010



- PRIMARY COLOR (P-1): RED BRICK (RED RANGE WIRECUT BY BORAL BRICK)
- PRIMARY COLOR (P-2): CHARCOAL GRAY METAL ROOFING
- PRIMARY COLOR (A-1): MEDIUM BROWN BRICK (CRIMSON DARK VELOUR BY CAROLINA CERAMICS)
- PRIMARY COLOR (A-2): LIGHT TAN EIFS (SAHARA FINISH / ALMOND BY SENERGY)
- PRIMARY COLOR (A-4): WHITE WOOD FASCIA & TRIM



- PRIMARY COLOR (P-1): RED BRICK (RED RANGE WIRECUT BY BORAL BRICK)
- PRIMARY COLOR (P-2): CHARCOAL GRAY METAL ROOFING
- PRIMARY COLOR (A-1): MEDIUM BROWN BRICK (CRIMSON DARK VELOUR BY CAROLINA CERAMICS)
- PRIMARY COLOR (A-2): LIGHT TAN EIFS (SAHARA FINISH / ALMOND BY SENERGY)
- PRIMARY COLOR (A-4): WHITE WOOD FASCIA & TRIM

LEFT ELEVATION
SCALE: 1/8"=1'-0"

CAROLINA LEGACY ALL-STARS BUILDING

CAROLINA LEGACY ALL-STARS BUILDING
125 QUARRYSTONE CIRCLE
CARY, NORTH CAROLINA