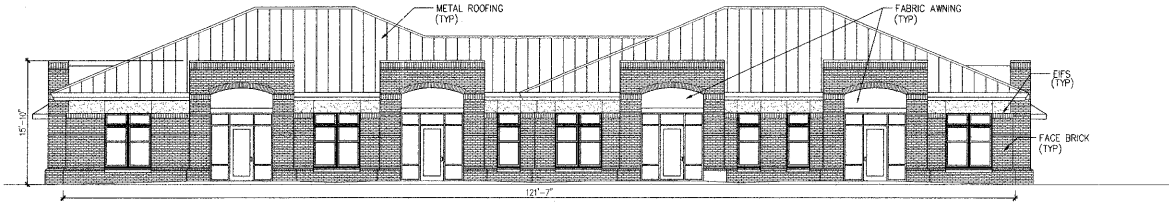


1: MATERIALS OVERLAY

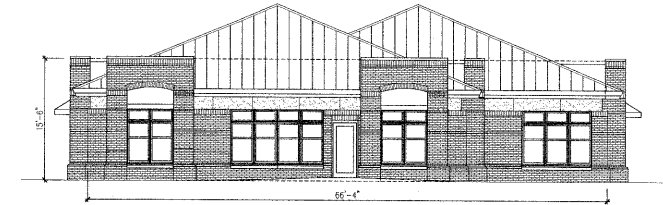
09-MU-001/09-SP-041
 APPROVED
 TOWN OF CARY

Approved by: TC Date: 12/19/2009
 Planning: KAD Date: 11/5/2009
 Engineering: SS Date: 11/6/2009



TOTAL FACADE AREA: 15'-10" X 121'-7" = 1,885 SF
 AREA OF WINDOWS & DOORS: -507 SF
 AREA OF METAL ROOFING: -223 SF
 1,155 SF

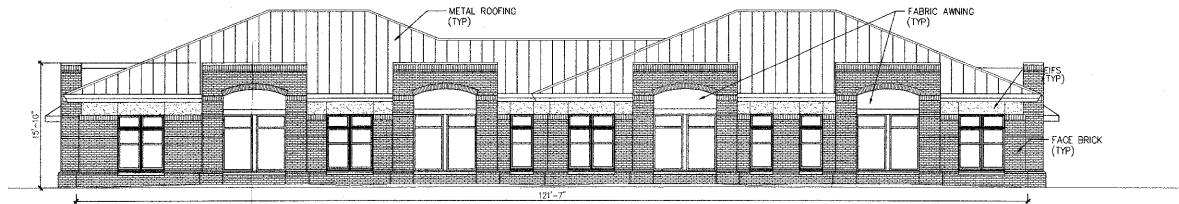
REQUIRED BRICK/STONE/CAST CONCRETE: COMMERCIAL AND MIXED-USES (X .75)= 867 SF MINIMUM
 PROVIDED BRICK/STONE/CAST CONCRETE: COMMERCIAL AND MIXED-USES = 958 SF



TOTAL FACADE AREA: 1,028 SF
 AREA OF WINDOWS & DOORS: -254 SF
 AREA OF METAL ROOFING: -202 SF
 572 SF

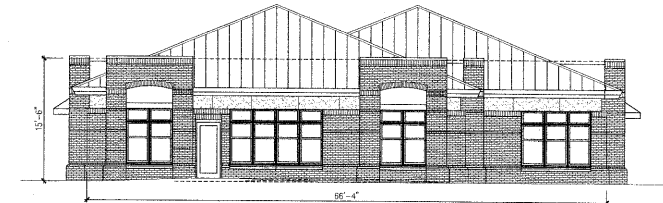
REQUIRED BRICK/STONE/CAST CONCRETE: COMMERCIAL AND MIXED-USES (X .75)= 429 SF MINIMUM
 PROVIDED BRICK/STONE/CAST CONCRETE: COMMERCIAL AND MIXED-USES = 536 SF

SCALE: 1/8"=1'-0"



TOTAL FACADE AREA: 15'-10" X 121'-7" = 1,885 SF
 AREA OF WINDOWS & DOORS: -441 SF
 AREA OF METAL ROOFING: -223 SF
 1,221 SF

REQUIRED BRICK/STONE/CAST CONCRETE: COMMERCIAL AND MIXED-USES (X .75)= 916 SF MINIMUM
 PROVIDED BRICK/STONE/CAST CONCRETE: COMMERCIAL AND MIXED-USES = 958 SF



TOTAL FACADE AREA: 1,028 SF
 AREA OF WINDOWS & DOORS: -254 SF
 AREA OF METAL ROOFING: -202 SF
 572 SF

REQUIRED BRICK/STONE/CAST CONCRETE: COMMERCIAL AND MIXED-USES (X .75)= 429 SF MINIMUM
 PROVIDED BRICK/STONE/CAST CONCRETE: COMMERCIAL AND MIXED-USES = 536 SF

LEFT ELEVATION
 SCALE: 1/8"=1'-0"



GARDEN OFFICE BUILDING

GARDEN OFFICE BUILDING
 151 QUARRYSTONE CIRCLE
 CARY, NORTH CAROLINA