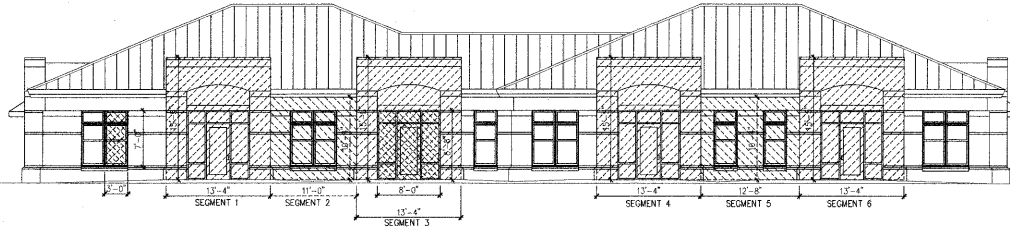


# 4: PROPORTION OVERLAY

09-MU-001/09-SP-041

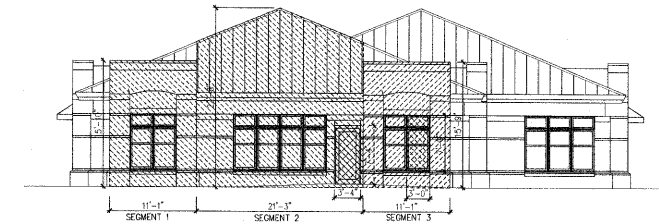
APPROVED  
TOWN OF CARY

Approved by: JTC Date: 12/16/2009  
 Planning: KANL Date: 1/16/2010  
 Engineering: SS Date: 1/16/2010



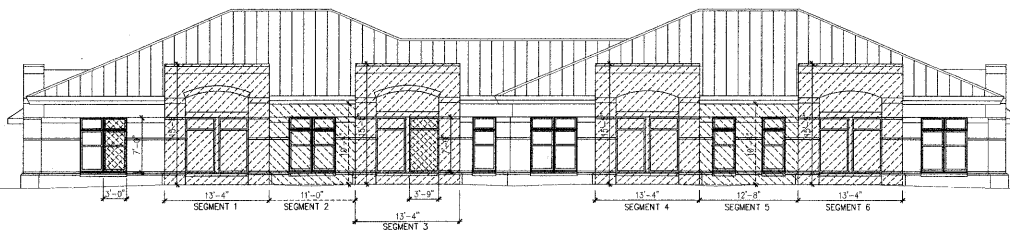
BUILDING SEGMENT RATIO 1:	HEIGHT: 15'-5"	WIDTH: 13'-4"
BUILDING SEGMENT RATIO 2:	HEIGHT: 11'-0"	WIDTH: 10'-4"
BUILDING SEGMENT RATIO 3:	HEIGHT: 15'-5"	WIDTH: 13'-4"
BUILDING SEGMENT RATIO 4:	HEIGHT: 15'-5"	WIDTH: 13'-4"
BUILDING SEGMENT RATIO 5:	HEIGHT: 12'-8"	WIDTH: 10'-4"
BUILDING SEGMENT RATIO 6:	HEIGHT: 15'-5"	WIDTH: 13'-4"

WINDOW & DOOR RATIO 1:	HEIGHT: 7'-0"	WIDTH: 3'-0"
WINDOW & DOOR RATIO 2:	HEIGHT: 9'-10"	WIDTH: 12'-1"



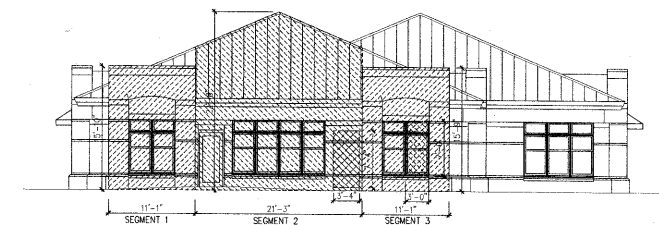
BUILDING SEGMENT RATIO 1:	HEIGHT: 15'-10"	WIDTH: 11'-1"	WINDOW & DOOR RATIO 1:	HEIGHT: 7'-4"	WIDTH: 3'-4"
BUILDING SEGMENT RATIO 2:	HEIGHT: 12'-8"	WIDTH: 21'-3"	WINDOW & DOOR RATIO 2:	HEIGHT: 7'-0"	WIDTH: 3'-0"
BUILDING SEGMENT RATIO 3:	HEIGHT: 15'-19"	WIDTH: 11'-1"			

RIGHT ELEVATION  
SCALE: 1/8"=1'-0"



BUILDING SEGMENT RATIO 1:	HEIGHT: 15'-5"	WIDTH: 13'-4"
BUILDING SEGMENT RATIO 2:	HEIGHT: 11'-0"	WIDTH: 10'-4"
BUILDING SEGMENT RATIO 3:	HEIGHT: 15'-5"	WIDTH: 13'-4"
BUILDING SEGMENT RATIO 4:	HEIGHT: 15'-5"	WIDTH: 13'-4"
BUILDING SEGMENT RATIO 5:	HEIGHT: 12'-8"	WIDTH: 10'-4"
BUILDING SEGMENT RATIO 6:	HEIGHT: 15'-5"	WIDTH: 13'-4"

WINDOW & DOOR RATIO 1:	HEIGHT: 7'-0"	WIDTH: 3'-0"
WINDOW & DOOR RATIO 2:	HEIGHT: 7'-0"	WIDTH: 3'-9"



BUILDING SEGMENT RATIO 1:	HEIGHT: 15'-10"	WIDTH: 11'-1"	WINDOW & DOOR RATIO 1:	HEIGHT: 7'-4"	WIDTH: 3'-4"
BUILDING SEGMENT RATIO 2:	HEIGHT: 12'-8"	WIDTH: 21'-3"	WINDOW & DOOR RATIO 2:	HEIGHT: 7'-0"	WIDTH: 3'-0"
BUILDING SEGMENT RATIO 3:	HEIGHT: 15'-19"	WIDTH: 11'-1"			

LEFT ELEVATION  
SCALE: 1/8"=1'-0"



## GARDEN OFFICE BUILDING

GARDEN OFFICE BUILDING  
151 QUARRYSTONE CIRCLE  
CARY, NORTH CAROLINA