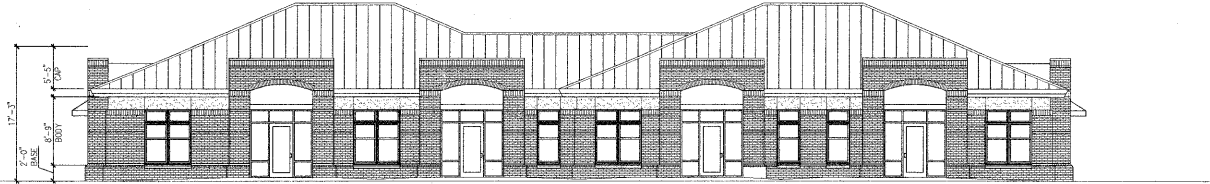


7: ARTICULATION OVERLAY

09-MU-001/09-SP-041
 APPROVED
 TOWN OF CARY

Approved by: JC Date: 12/10/2009
 Planning: KAH Date: 1/14/2010
 Engineering: SS Date: 1/14/2010

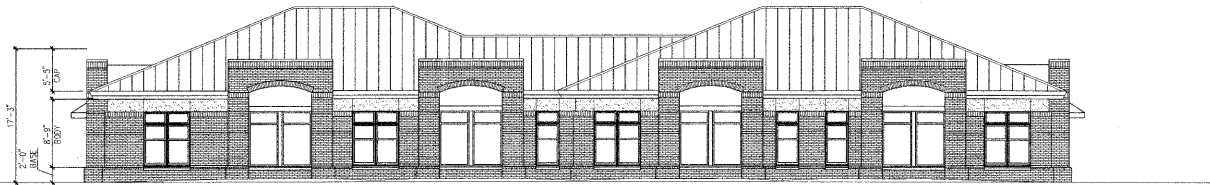


TOTAL HEIGHT: 17'-3"
 MINIMUM HEIGHT OF BODY (X .5) 8'-7 1/2"

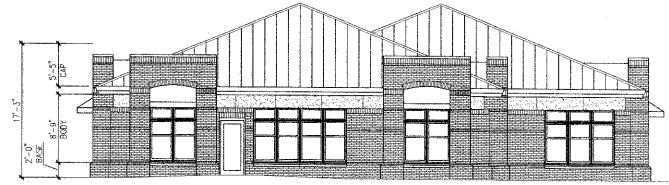


TOTAL HEIGHT: 17'-3"
 MINIMUM HEIGHT OF BODY (X .5) 8'-7 1/2"

RIGHT ELEVATION
 SCALE: 1/8"=1'-0"



TOTAL HEIGHT: 17'-3"
 MINIMUM HEIGHT OF BODY (X .5) 8'-7 1/2"



TOTAL HEIGHT: 17'-3"
 MINIMUM HEIGHT OF BODY (X .5) 8'-7 1/2"

LEFT ELEVATION
 SCALE: 1/8"=1'-0"



GARDEN OFFICE BUILDING

GARDEN OFFICE BUILDING
 151 QUARRYSTONE CIRCLE
 CARY, NORTH CAROLINA