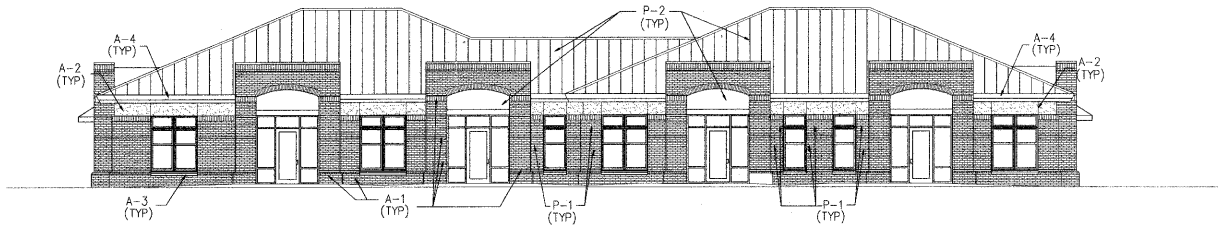


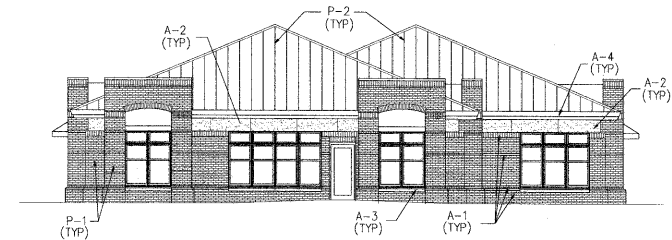
9: COLOR OVERLAY

09-MU-001/09-SP-041
APPROVED
TOWN OF CARY

Approved by: J.C. Date: 12/18/2009
Planning: KAS Date: 1/6/2010
Engineering: SS Date: 1/6/2010

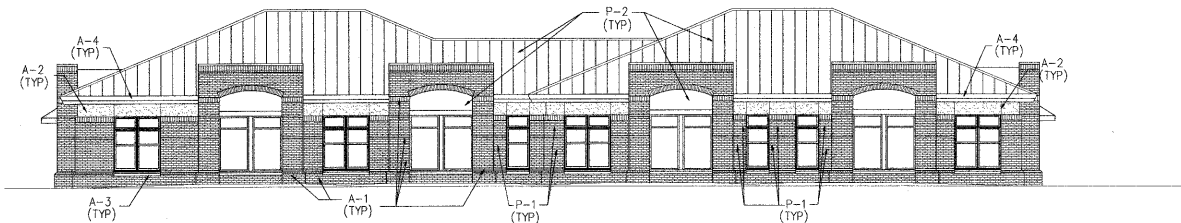


- PRIMARY COLOR (P-1): RED BRICK (RED RANGE WIRECUT BY BORAL BRICK)
- PRIMARY COLOR (P-2): CHARCOAL GRAY METAL ROOFING/AWNING
- PRIMARY COLOR (A-1): MEDIUM BROWN BRICK (CRIMSON DARK VELOUR BY CAROLINA CERAMICS)
- PRIMARY COLOR (A-2): LIGHT TAN EIFS (SAHARA FINISH / ALMOND BY SENERGY)
- PRIMARY COLOR (A-3): LIGHT TAN CAST STONE
- PRIMARY COLOR (A-4): WHITE WOOD FASCIA & TRIM

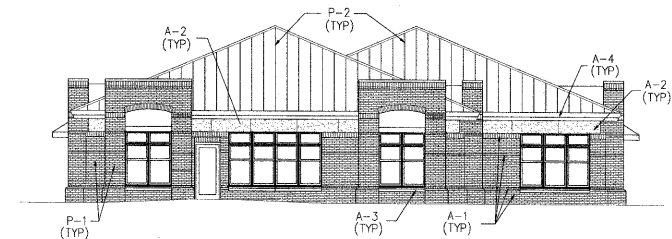


- PRIMARY COLOR (P-1): RED BRICK (RED RANGE WIRECUT BY BORAL BRICK)
- PRIMARY COLOR (P-2): CHARCOAL GRAY METAL ROOFING/AWNING
- PRIMARY COLOR (A-1): MEDIUM BROWN BRICK (CRIMSON DARK VELOUR BY CAROLINA CERAMICS)
- PRIMARY COLOR (A-2): LIGHT TAN EIFS (SAHARA FINISH / ALMOND BY SENERGY)
- PRIMARY COLOR (A-3): LIGHT TAN CAST STONE
- PRIMARY COLOR (A-4): WHITE WOOD FASCIA & TRIM

RIGHT ELEVATION
SCALE: 1/8"=1'-0"



- PRIMARY COLOR (P-1): RED BRICK (RED RANGE WIRECUT BY BORAL BRICK)
- PRIMARY COLOR (P-2): CHARCOAL GRAY METAL ROOFING/AWNING
- PRIMARY COLOR (A-1): MEDIUM BROWN BRICK (CRIMSON DARK VELOUR BY CAROLINA CERAMICS)
- PRIMARY COLOR (A-2): LIGHT TAN EIFS (SAHARA FINISH / ALMOND BY SENERGY)
- PRIMARY COLOR (A-3): LIGHT TAN CAST STONE
- PRIMARY COLOR (A-4): WHITE WOOD FASCIA & TRIM



- PRIMARY COLOR (P-1): RED BRICK (RED RANGE WIRECUT BY BORAL BRICK)
- PRIMARY COLOR (P-2): CHARCOAL GRAY METAL ROOFING/AWNING
- PRIMARY COLOR (A-1): MEDIUM BROWN BRICK (CRIMSON DARK VELOUR BY CAROLINA CERAMICS)
- PRIMARY COLOR (A-2): LIGHT TAN EIFS (SAHARA FINISH / ALMOND BY SENERGY)
- PRIMARY COLOR (A-3): LIGHT TAN CAST STONE
- PRIMARY COLOR (A-4): WHITE WOOD FASCIA & TRIM VARIATION

SCALE: 1/8"=1'-0"



GARDEN OFFICE BUILDING

GARDEN OFFICE BUILDING
151 QUARRYSTONE CIRCLE
CARY, NORTH CAROLINA