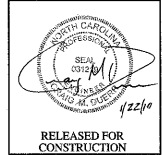


TEMPORARY BARRICADE FOR DEAD END ROAD

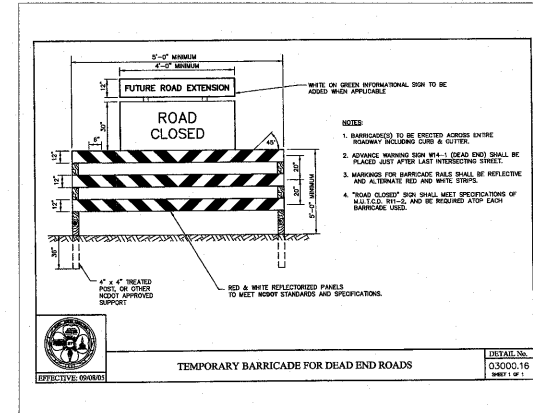
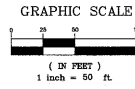
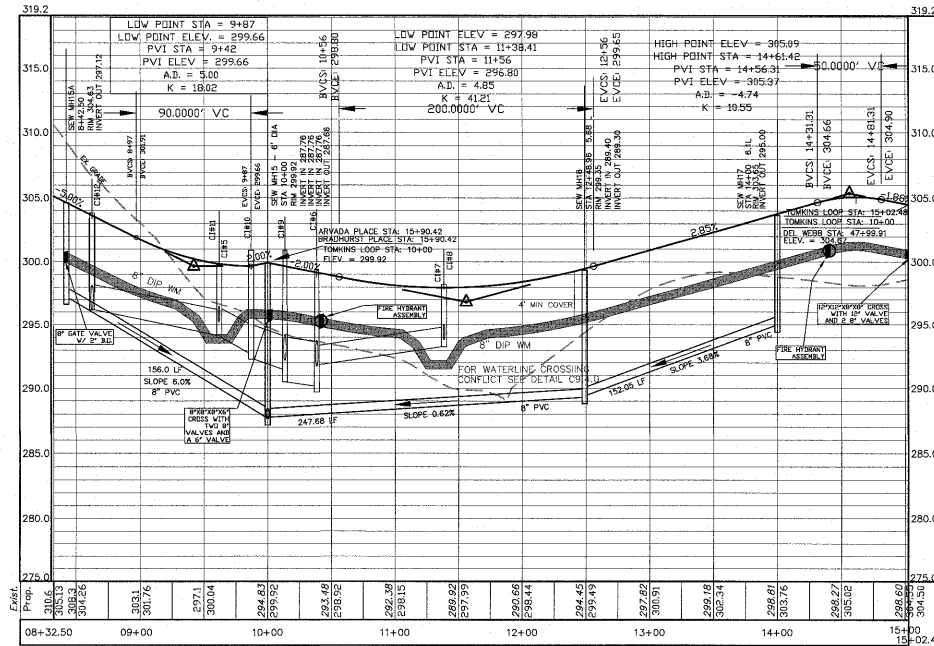


06-SP-079-B
APPROVED
TOWN OF CARY

Approved by *DAC* Date *1/8/2010*
Planning *LKH* Date *2/12/2010*
Engineering *SS* Date *11/21/2010*



RELEASED FOR CONSTRUCTION



TEMPORARY BARRICADE FOR DEAD END ROADS
EFFECTIVE: 09/08/01
DETAIL NO. C3000-16
SHEET 1 OF 1

HORIZ. SCALE: 1" = 50'
VERT. SCALE: 1" = 5'

Carolina Preserve by Del Webb at Amberly A/R Phase 3

Cary, NC
Pulte Homes Corporation
1225 Concord Green Drive, Suite 250
Cary, NC 27518

REVISIONS

PROJECT #: 09-4020 DATE: 01/22/2010
DRAWN BY: MB CHECKED BY: CD
TITLE: ARVADA DRIVE PLAN AND PROFILE

SHEET
C3.16