



JOB NUMBER: 30403.00  
 DRAWN BY: ENK  
 CHECKED BY: GH

Niles Bolton Associates, Inc.  
 One Buckhead Plaza  
 3000 Buckhead Road, NW  
 Atlanta, Georgia  
 404-865-7600  
 Fax: 404-365-7610  
 info@nilesbolton.com

REVISIONS  
 DATE DESCRIPTION

Scale: 1/2" = 1'-0"

This drawing, as an instrument of service, is the property of Niles Bolton Associates, Inc. and shall not be reproduced, published or used in any way without the permission of the Landscape Architect.

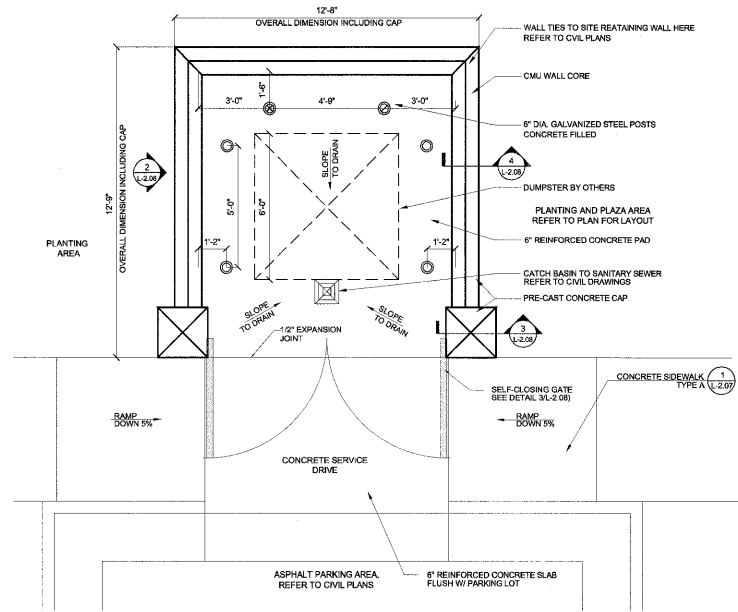
**Carolina Preserve**  
 In The Woods  
 A T A M B E R L Y  
 Cary, North Carolina

HARDSCAPE DETAILS

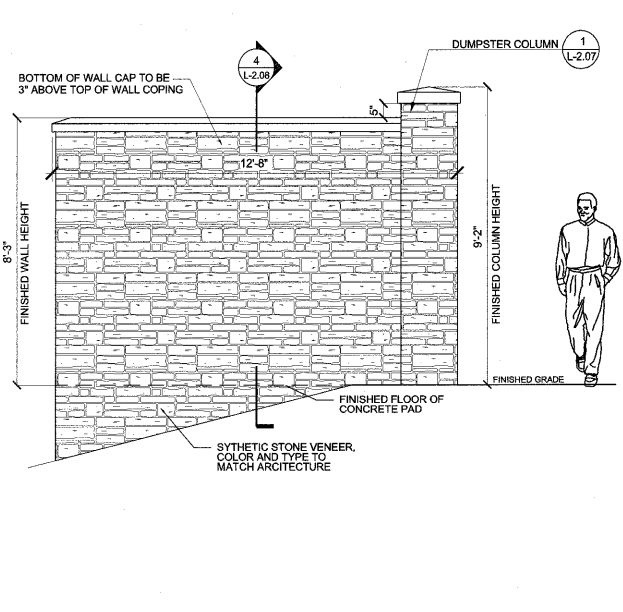
L-2.08

DATE: 1/2/06

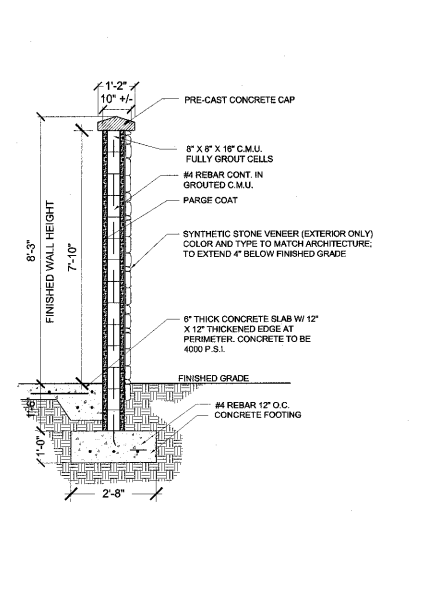
RELEASED FOR CONSTRUCTION



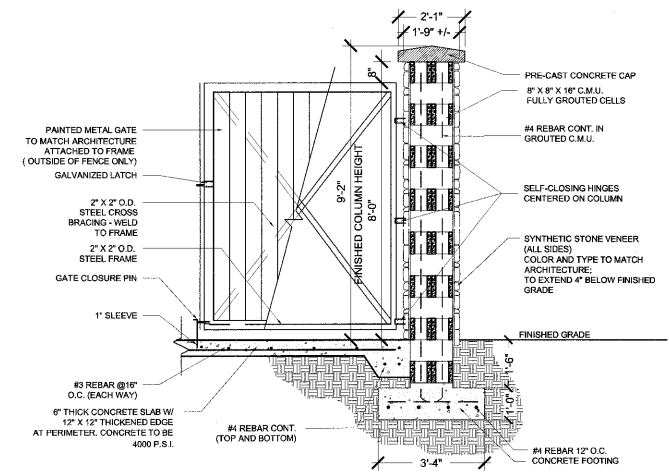
**1. Dumpster Enclosure -- Plan**  
 Scale: 1/2" = 1'-0"



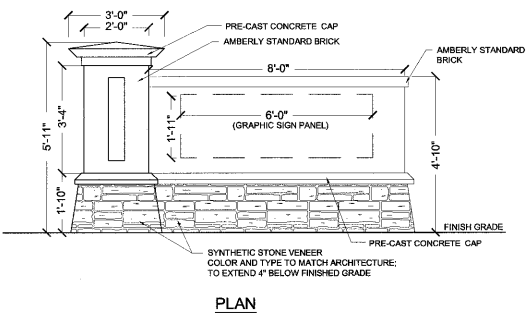
**2. Enclosure Wall -- Elevation**  
 Scale: 1/2" = 1'-0"



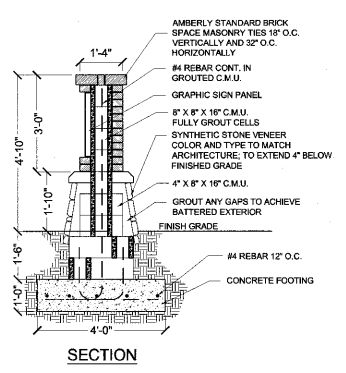
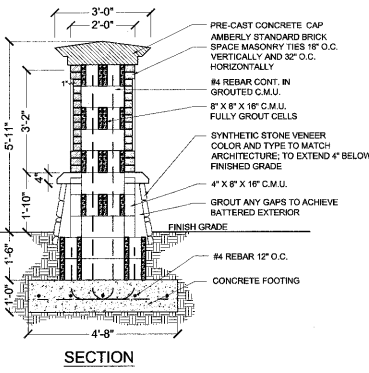
**3. Enclosure Wall -- Section**  
 Scale: 1/2" = 1'-0"



**4. Dumpster Column -- Section**  
 Scale: 1/2" = 1'-0"



**5. Clubhouse Entry Sign**  
 Scale: 1/2" = 1'-0"



**Clubhouse Entry Sign**  
 Scale: 1/2" = 1'-0"

CARY PROJECT NUMBER 05-SP-135  
 APPROVED  
 TOWN OF CARY  
 APPROVED BY: DEC DATE: 12-19-05  
 PLANNING DATE: 1/2/06  
 ENGINEERING: TS DATE: 1/19/06