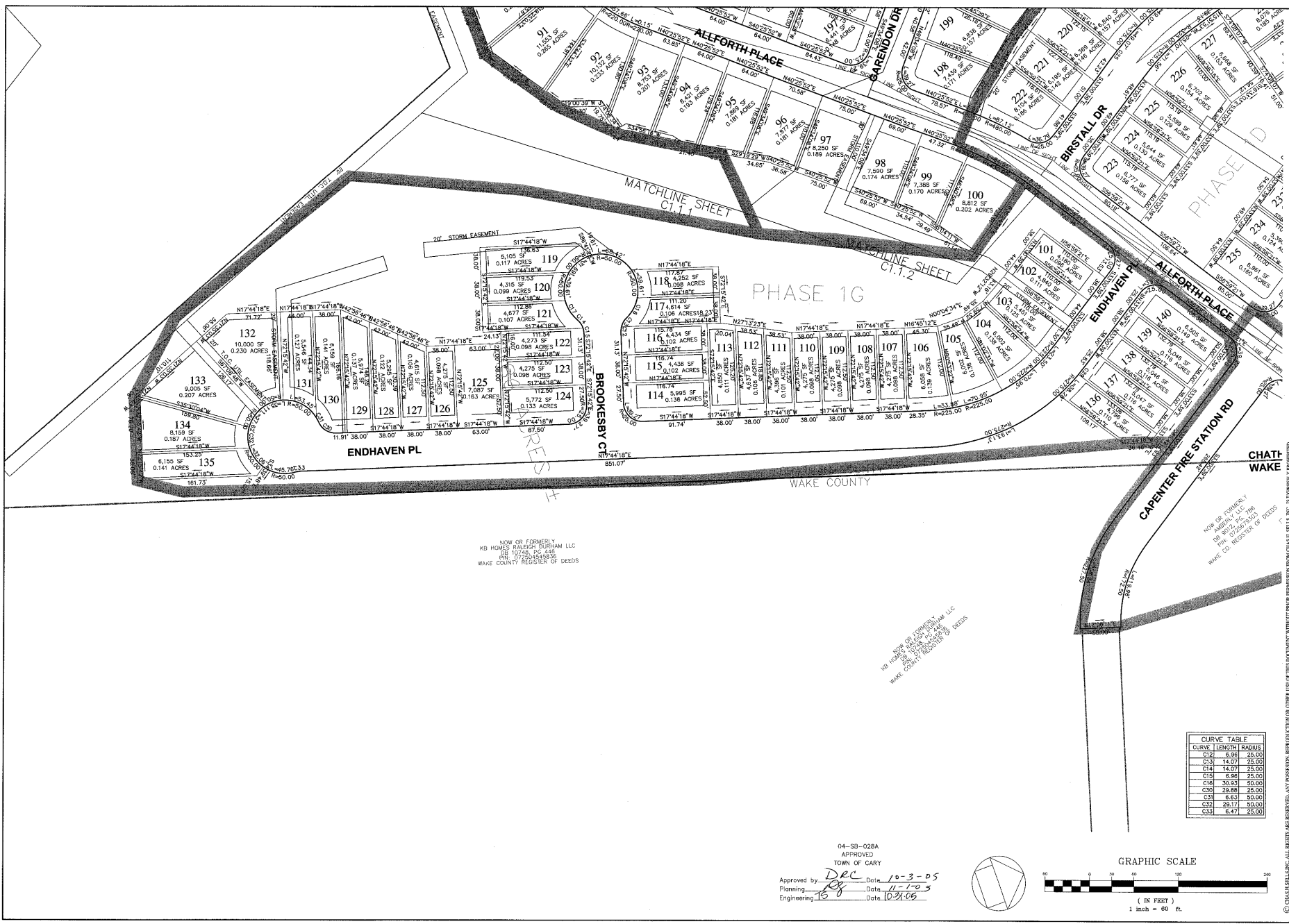


V:\Projects\1306 Projects\1306-1300 Ambery_JRB\Drawings\04-4036-overall 1306.dwg, 2:1--3 LOT LAYOUT, 10/26/2005 8:28:36 AM

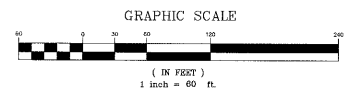
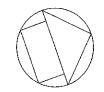


NOW OR FORMERLY
KB HOMES RALEIGH DURHAM LLC
JOB 10745, PG 445
WAKE COUNTY REGISTER OF DEEDS

NOW OR FORMERLY
KB HOMES RALEIGH DURHAM LLC
JOB 10745, PG 445
WAKE COUNTY REGISTER OF DEEDS

CURVE TABLE		
CURVE	LENGTH	RADIUS
C12	6.96	25.00
C13	14.07	25.00
C14	14.07	25.00
C15	6.96	25.00
C16	30.93	50.00
C20	29.98	25.00
C31	6.63	50.00
C32	29.17	50.00
C33	6.47	25.00

04-SB-028A
APPROVED
TOWN OF CARY
Approved by DEC Date 10-3-05
Planning RS Date 11-10-05
Engineering LS Date 10-31-05



**Carolina Preserve by
Del Webb at Ambery
Phase 1**
Cary, NC
GS Carolina
3412 1/2 Hillsborough St.
Raleigh, NC 27607

CHAS. H. SELLS, INC.
Consulting Engineers, Surveyors & Photogrammetrists
15401 Weston Parkway, Suite 100
Cary, NC 27513
Tel: 919-678-0035
Fax: 919-678-0206
www.chasells.com

RELEASED FOR CONSTRUCTION
10/26/05
DONALD K. BEYER

REVISIONS	
1	ADDED PHASE LINES 8-15-05

PROJECT # 04-4036 DATE: 6/25/05
DRAWN BY: WF CHECKED BY: DS

TITLE
LOT LAYOUT
3 OF 5

SHEET
C1.1.3